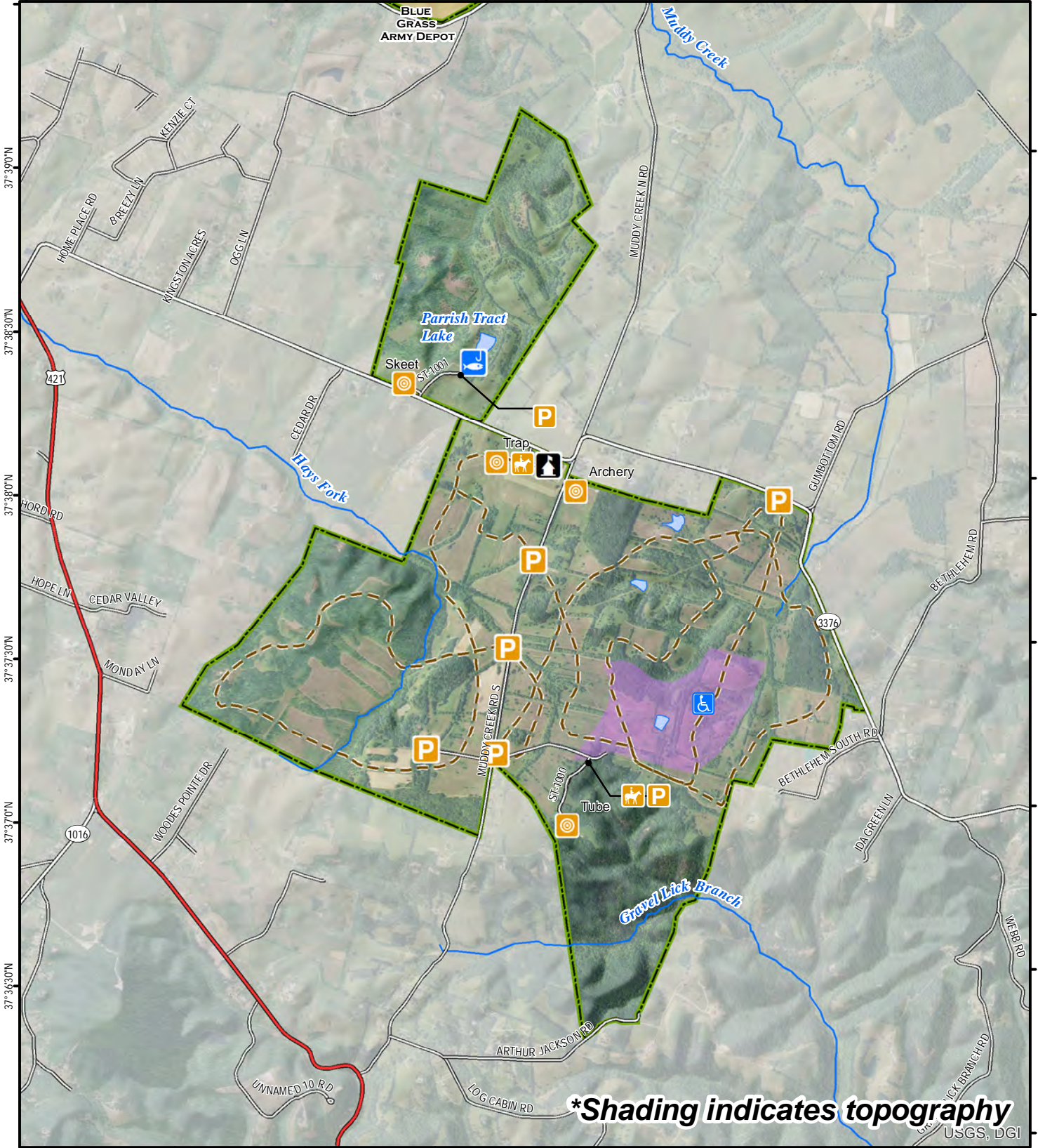


# Miller Welch - Central Kentucky Wildlife Management Area

84°14'0"W 84°13'30"W 84°13'0"W 84°12'30"W 84°12'0"W 84°11'30"W 84°11'0"W 84°10'30"W

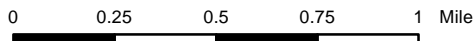


**\*Shading indicates topography**

USGS, DGI

A map legend and additional information are provided on PDF pages that accompany this map.

Publication Date: 11/18/2016  
Imagery from Farm Service Agency 2016



Scale 1:30,000

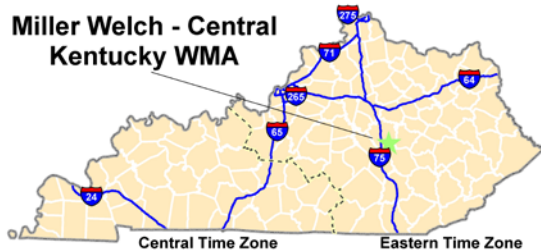


**Note to Map Users**

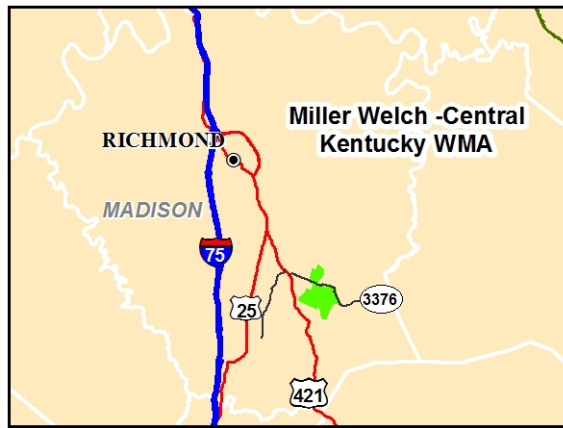
Map prepared by Kentucky Department of Fish & Wildlife Resources (KDFWR). Although KDFWR strives for accuracy, data used to create this map are from a variety of sources and dates; as such, KDFWR makes no representations regarding the accuracy or fitness for use of the information furnished herein.

# Miller Welch – Central Kentucky WMA Information

## Public Hunting Area Location



## Regional Locator



## WMA Overview

**Location & Size:** Madison County, 1,847 acres.

**Contact:** (859) 986-4130

**Elevation:** minimum 868 feet, maximum 1095 feet.

**Entrance GPS coordinates:** Latitude N 37.63448,  
Longitude W -84.20066

**Area Habitat:** mostly open land: open land 59%,  
forest 40%, wetland 0%, open water 0%.

**Directions & Description:** Nine miles southeast of Richmond, from US 421 take Dreyfus RD east (KY 3376, also Bearwallow RD) at Kingston and proceed about 2 miles east. The WMA office is on the right, just before Muddy Creek RD (Paved road through center of area).

Rolling to flat terrain with fields, wooded areas. Oak-hickory timber stands, cedar thickets. Fishing in area ponds for largemouth bass, bluegill, channel catfish. Area used most for field trials, bird dog training, hiking, birding, trap and skeet shooting. Limited hunting for deer (archery only), wild turkey, squirrel, and dove; consult current Hunting Guide.

Shooting range (for single projectile firearms only; no shotshells or pistols allowed) closed Monday, open Tuesday--Saturday 9:00 AM-sunset & Sundays noon-sunset. Check online calendar or call Area office for closures or events. Trap and skeet shooting facilities are operated by local clubs and open to the public seasonally for nominal fees. Contact WMA office for current schedule and pricing. Archery ranges (10-60 yard static range and 30-station woodland course) open daily 9:00 AM-sunset.

Mobility impaired access to permit holders in designated area. Administration Building available for conservation club groups. Berea, Fort Boonesborough State Park and Daniel Boone National Forest are nearby.

Owned by Kentucky Department of Fish and Wildlife Resources.

## Online Resources




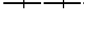

Public Hunting Area users must abide by the Kentucky hunting, trapping, and fishing regulations. It is incumbent on persons using Public Hunting Areas to become familiar with these regulations. Kentucky Department of Fish & Wildlife Resources provides these regulations on our Web site at [fw.ky.gov](http://fw.ky.gov) or by calling 1-800-858-1549.

# Wildlife Management Area Map Notes & Legend

## NOTE TO MAP USERS:

For most WMA maps the landscape is depicted using a combination of elevation contours, hillshading and a green tint indicating woodland areas that is derived from satellite imagery. On WMAs that are relatively small or have a history of surface mining aerial photography is used.

## WMA Map Legend

	WMA Office		WMA Boundary		Populated Place
	Information Kiosk		Aerial photograph		Kentucky Boundary
	Check station		Other Public Hunting Areas		Interstate Highway
	Mobility-impaired Hunting Blind		Area Off Limits		Kentucky Parkway
	Trailhead		No Hunting		U.S. Highway
	Horseback Trailhead		Seasonally Restricted Access		State Highway
	Parking Lot		Mobility Impaired Hunting Area		Local Road
	Picnic Area		Primitive Hunting Only		Forest Service Road
	Restrooms		Foot Traffic Only		Active Railroad
	Wildlife Viewing Site		Open Water		Abandoned Railroad
	Interpretive Site		Wetland		Federal Recreation Trail
	Retriever Training Site		Woodland		WMA Road
	Gate				WMA Foot Trail
	Campground				WMA Horse Trail
	Cemetery				Gas Pipeline
	Corps of Engineers Office				Powerline
	Waterfowl Blind				Rivers and Streams
	Shooting Range				Dam
	Established Bank Access				Trout Waters
	Fishing Pier				Elevation Contour
	Carrydown Launch				
	Small Boat Ramp				
	Large Boat Ramp				
	State Park Office				