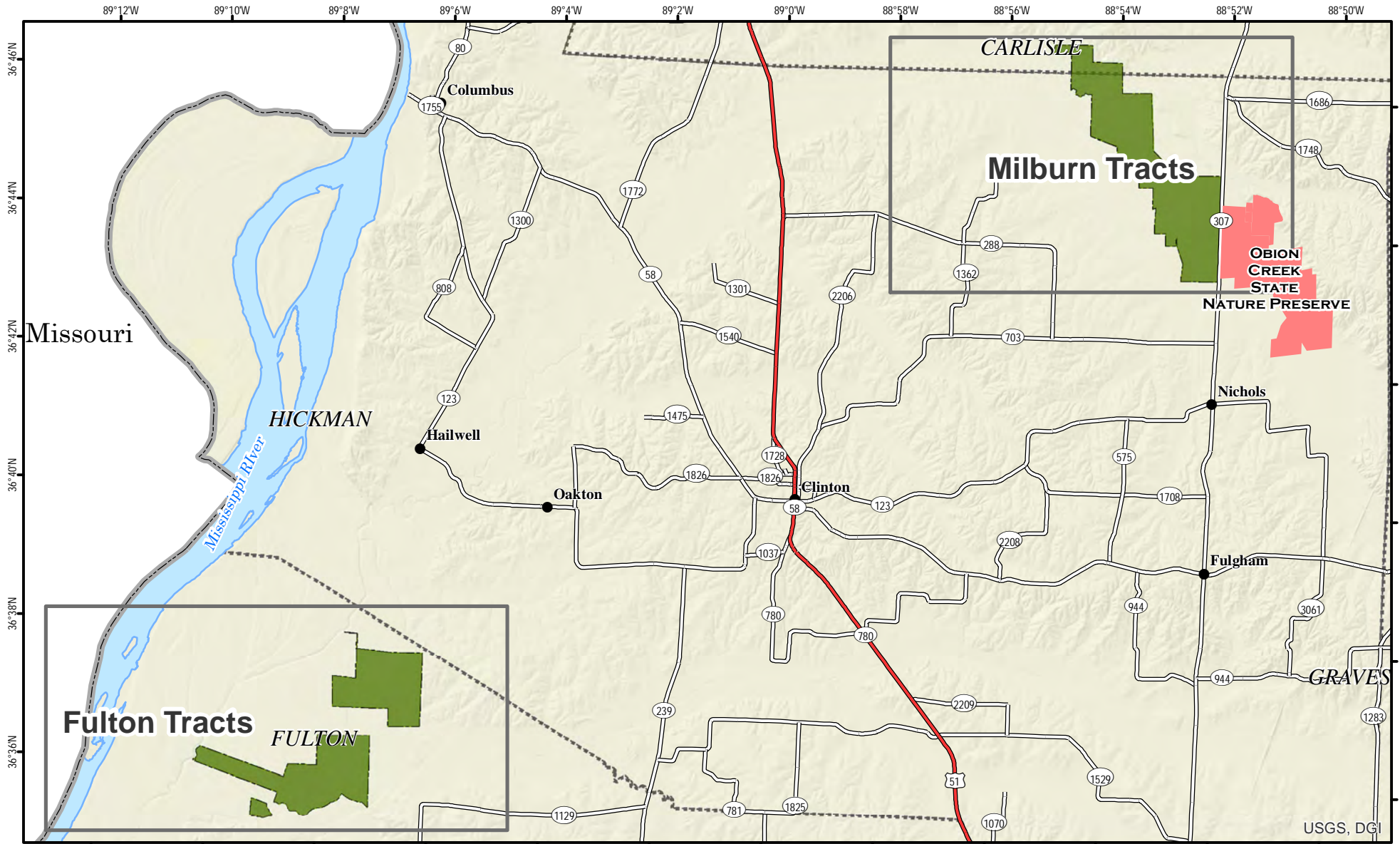
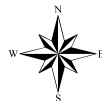


# Obion Creek Wildlife Management Area Index Map



A map legend and additional information are provided on PDF pages that accompany this map.



0 0.5 1 1.5 2 2.5 3 Mile

Scale 1:144,000

Publication Date: 11/17/2016

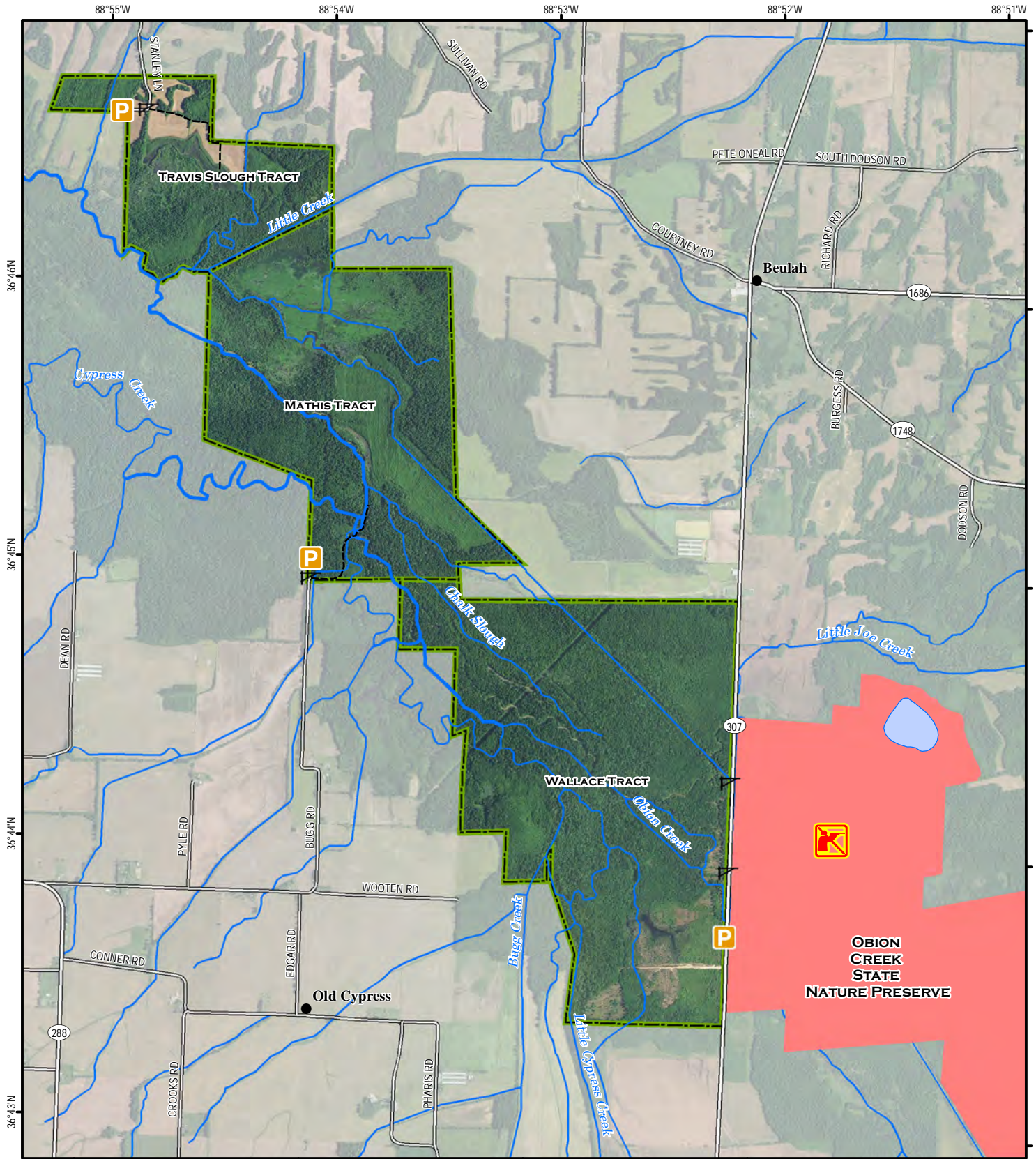


### Note to Map Users

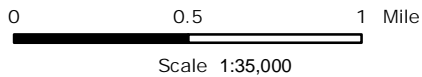
Map prepared by Kentucky Department of Fish & Wildlife Resources (KDFWR). Although KDFWR strives for accuracy, data used to create this map are from a variety of sources and dates; as such, KDFWR makes no representations regarding the accuracy or fitness for use of the information furnished herein.



# Obion Creek Wildlife Management Area Milburn Tracts



A map legend and additional information are provided on PDF pages that accompany this map.



### Note to Map Users

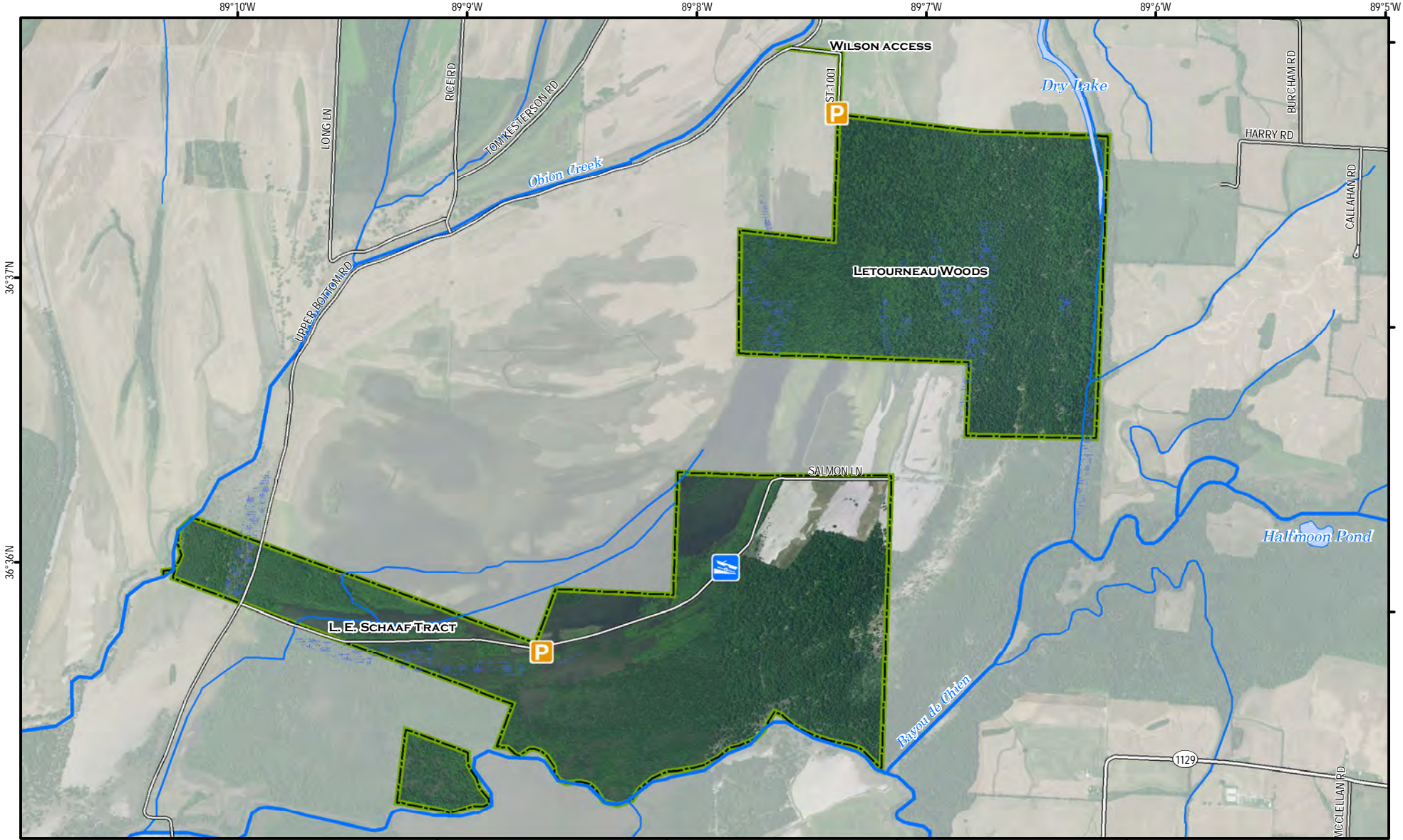
Map prepared by Kentucky Department of Fish & Wildlife Resources (KDFWR). Although KDFWR strives for accuracy, data used to create this map are from a variety of sources and dates; as such, KDFWR makes no representations regarding the accuracy or fitness for use of the information furnished herein.

Publication Date: 11/18/2016  
Imagery from Farm Service Agency 2016



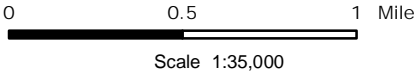


# Obion Creek Wildlife Management Area Fulton County Tracts



A map legend and additional information are provided on PDF pages that accompany this map.

Publication Date: 11/17/2016  
Imagery from Farm Service Agency 2016



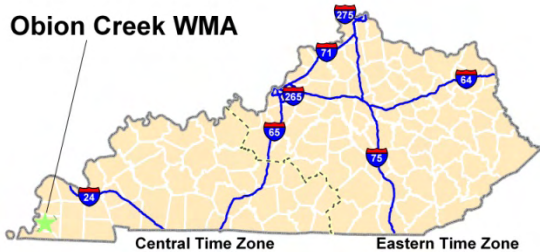
**Note to Map Users**

Map prepared by Kentucky Department of Fish & Wildlife Resources (KDFWR). Although KDFWR strives for accuracy, data used to create this map are from a variety of sources and dates; as such, KDFWR makes no representations regarding the accuracy or fitness for use of the information furnished herein.

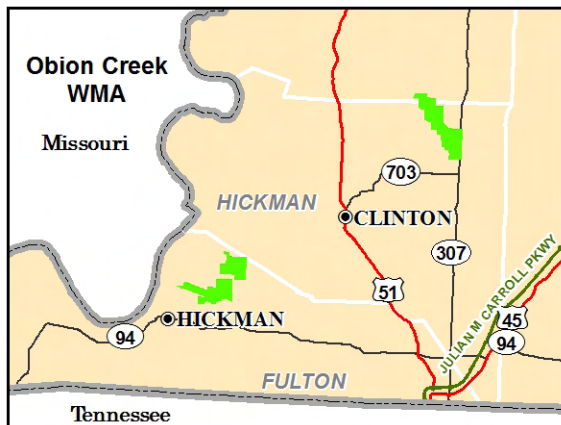
# Obion Creek WMA Information

## Public Hunting Area Location

### Obion Creek WMA



## Regional Locator



## WMA Overview

**Location & Size:** Hickman, Carlisle & Fulton counties, 4,258 acres.

**Contact:** (270) 488-3233

**Elevation:** minimum 278 feet, maximum 398 feet.

**Entrance GPS coordinates:** Latitude N 36.63167, Longitude W -89.12648

**Area Habitat:** mostly wetland: open land 6%, forest 10%, wetland 75%, open water 9%

## Directions & Description:

Consists of several tracts and three large blocks. The largest block (Travis Slough, Mathis, and Wallace Tracts) is located northeast of Clinton, KY off KY-307. Two other blocks (Letourneau Woods and L.E. Schaaf Tract) are southwest of Clinton, KY and northeast of Hickman, KY.

**Wallace Tract:** (1099 acres) is west of HWY 307 at Obion Creek bridge. Bottomland hardwood swamp.

**Travis Slough Tract:** (329 acres), accessible by HWY 307 south of HWY 80 and west of Milburn, has good numbers of waterfowl during wet winters, as does Mathis Tract (760 acres). From HWY 80 turn south onto 307. Go 6.5 miles to 703, turn west and go 1 mile to Conner RD. Turn north and go for 1.6 miles to Edgar RD. From here travel north. 5 miles to Bugg RD. The property is 1.5 miles north.

**L.E. Schaaf Tract:** (1199 acres), Fulton County, off Upper Bottom RD, north of Hickman. Wintering bald eagles.

**Letourneau Woods Tract:**, Fulton County, 870 acres of old growth hardwood forest, seasonal flooding. Access from Wilson Access, off Upper Bottom RD.

Owned by Kentucky Department of Fish and Wildlife Resources, portions purchased with funds from the Heritage Lands Conservation Fund Board.

**The Obion Creek State Nature Preserve east of HWY 307 is closed to hunting.**

## Online Resources



Public Hunting Area users must abide by the Kentucky hunting, trapping, and fishing regulations. It is incumbent on persons using Public Hunting Areas to become familiar with these regulations. Kentucky Department of Fish & Wildlife Resources provides these regulations on our Web site at [fw.ky.gov](http://fw.ky.gov) or by calling 1-800-858-1549.

# Wildlife Management Area Map Notes & Legend

## NOTE TO MAP USERS:

For most WMA maps the landscape is depicted using a combination of elevation contours, hillshading and a green tint indicating woodland areas that is derived from satellite imagery. On WMAs that are relatively small or have a history of surface mining aerial photography is used.

## WMA Map Legend

	WMA Office		WMA Boundary		Populated Place
	Information Kiosk		Aerial photograph		Kentucky Boundary
	Check station		Other Public Hunting Areas		Interstate Highway
	Mobility-impaired Hunting Blind		Area Off Limits		Kentucky Parkway
	Trailhead		No Hunting		U.S. Highway
	Horseback Trailhead		Seasonally Restricted Access		State Highway
	Parking Lot		Mobility Impaired Hunting Area		Local Road
	Picnic Area		Primitive Hunting Only		Forest Service Road
	Restrooms		Foot Traffic Only		Active Railroad
	Wildlife Viewing Site		Open Water		Abandoned Railroad
	Interpretive Site		Wetland		Federal Recreation Trail
	Retriever Training Site		Woodland		WMA Road
	Gate				WMA Foot Trail
	Campground				WMA Horse Trail
	Cemetery				Gas Pipeline
	Corps of Engineers Office				Powerline
	Waterfowl Blind				Rivers and Streams
	Shooting Range				Dam
	Established Bank Access				Trout Waters
	Fishing Pier				Elevation Contour
	Carrydown Launch				
	Small Boat Ramp				
	Large Boat Ramp				
	State Park Office				