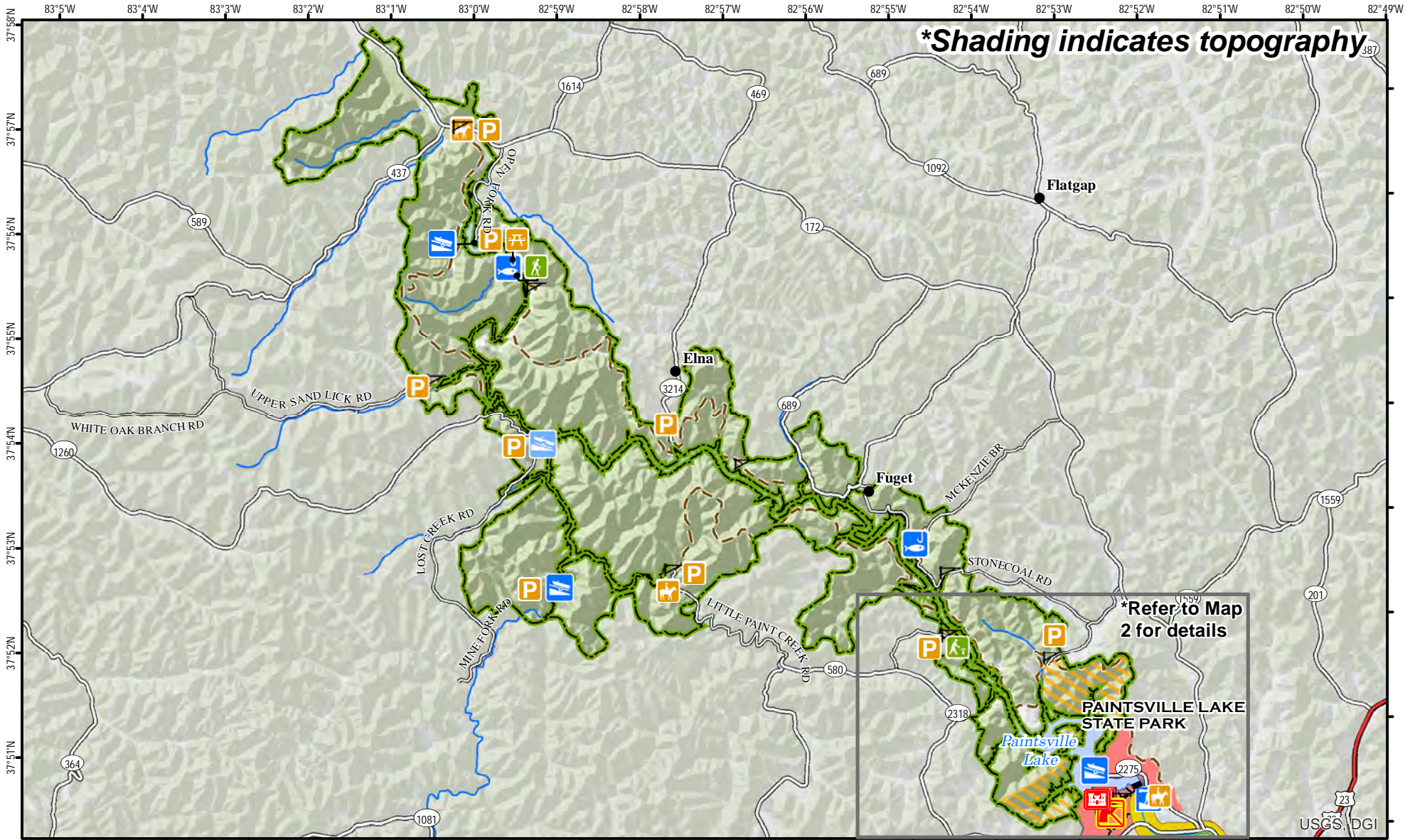


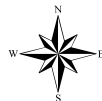


# Paintsville Lake Wildlife Management Area



A map legend and additional information are provided on PDF pages that accompany this map.

Publication Date: 11/18/2016  
 Land Classification from National Land Cover Database 2011



0 0.5 1 1.5 2 Mile

Scale 1:95,000



### Note to Map Users

Map prepared by Kentucky Department of Fish & Wildlife Resources (KDFWR). Although KDFWR strives for accuracy, data used to create this map are from a variety of sources and dates; as such, KDFWR makes no representations regarding the accuracy or fitness for use of the information furnished herein.

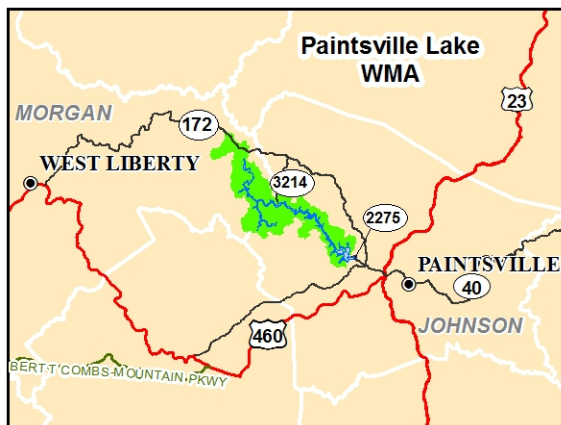


# Paintsville Lake WMA Information

## Public Hunting Area Location



## Regional Locator



## Directions & Description:

The WMA surrounds most of the shoreline of Paintsville Lake. Approximately 3 miles northwest of Paintsville on HWY 40, then take HWY 2275 to Marina and Dam. To access west side of WMA from West Liberty, take HWY 172 to HWY 3214.

Rolling hills, two-thirds in hardwood forest, some old fields and crop fields.

Opportunities for hunting, fishing, boating, birding on lake. Trout are stocked in Paintsville Lake, refer to the fishing guide for regulations.

Managed by Kentucky Department of Fish and Wildlife Resources. Owned by U.S. Army Corps of Engineers.

## Online Resources

Public Hunting Area users must abide by the Kentucky hunting, trapping, and fishing regulations. It is incumbent on persons using Public Hunting Areas to become familiar with these regulations. Kentucky Department of Fish & Wildlife Resources provides these regulations on our Web site at [fw.ky.gov](http://fw.ky.gov) or by calling 1-800-858-1549.

## WMA Overview

**Location & Size:** Johnson & Morgan counties.

WMA is 11,221 acres, Paintsville Lake is 996 acres.

**Contact:** (606) 226-9133; COE office (606) 297-6312.

**Elevation:** minimum 715 feet, maximum 1265 feet.

**Entrance GPS coordinates:** Latitude N 37.9003, Longitude W -82.96362

**Area Habitat:** mostly forest: open land 4%, forest 94%, wetland 0%, open water 1%.

# Wildlife Management Area Map Notes & Legend

## NOTE TO MAP USERS:

For most WMA maps the landscape is depicted using a combination of elevation contours, hillshading and a green tint indicating woodland areas that is derived from satellite imagery. On WMAs that are relatively small or have a history of surface mining aerial photography is used.

## WMA Map Legend

	WMA Office		WMA Boundary		Populated Place
	Information Kiosk		Aerial photograph		Kentucky Boundary
	Check station		Other Public Hunting Areas		Interstate Highway
	Mobility-impaired Hunting Blind		Area Off Limits		Kentucky Parkway
	Trailhead		No Hunting		U.S. Highway
	Horseback Trailhead		Seasonally Restricted Access		State Highway
	Parking Lot		Mobility Impaired Hunting Area		Local Road
	Picnic Area		Primitive Hunting Only		Forest Service Road
	Restrooms		Foot Traffic Only		Active Railroad
	Wildlife Viewing Site		Open Water		Abandoned Railroad
	Interpretive Site		Wetland		Federal Recreation Trail
	Retriever Training Site		Woodland		WMA Road
	Gate				WMA Foot Trail
	Campground				WMA Horse Trail
	Cemetery				Gas Pipeline
	Corps of Engineers Office				Powerline
	Waterfowl Blind				Rivers and Streams
	Shooting Range				Dam
	Established Bank Access				Trout Waters
	Fishing Pier				Elevation Contour
	Carrydown Launch				
	Small Boat Ramp				
	Large Boat Ramp				
	State Park Office				