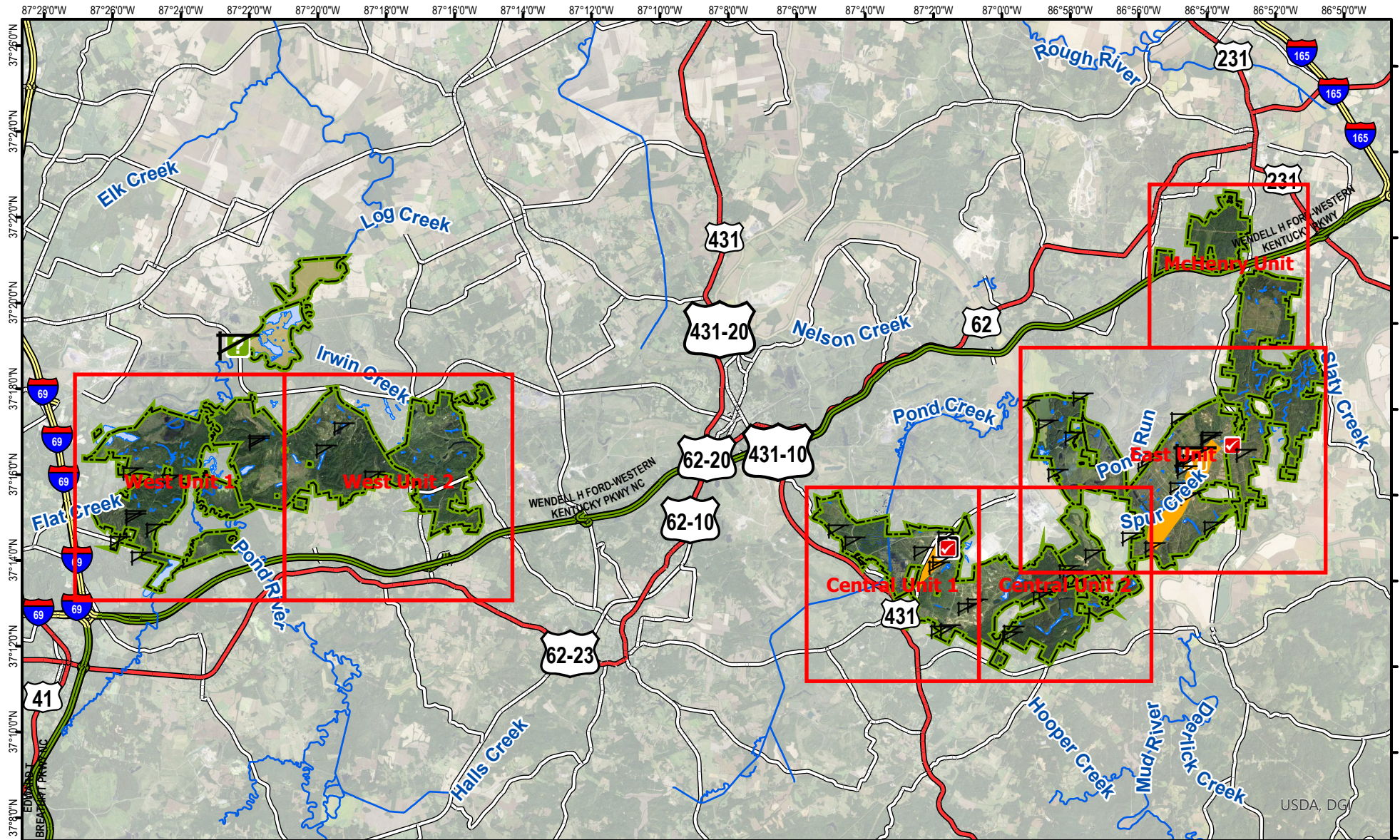
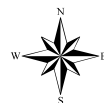


# Peabody WMA Index



A map legend and additional information are provided on PDF pages that accompany this map.

Publication Date: 01/09/2025  
Imagery from Farm Service Agency 2018



0 1.5 3 6 9 12 Miles

Scale 1:232,433

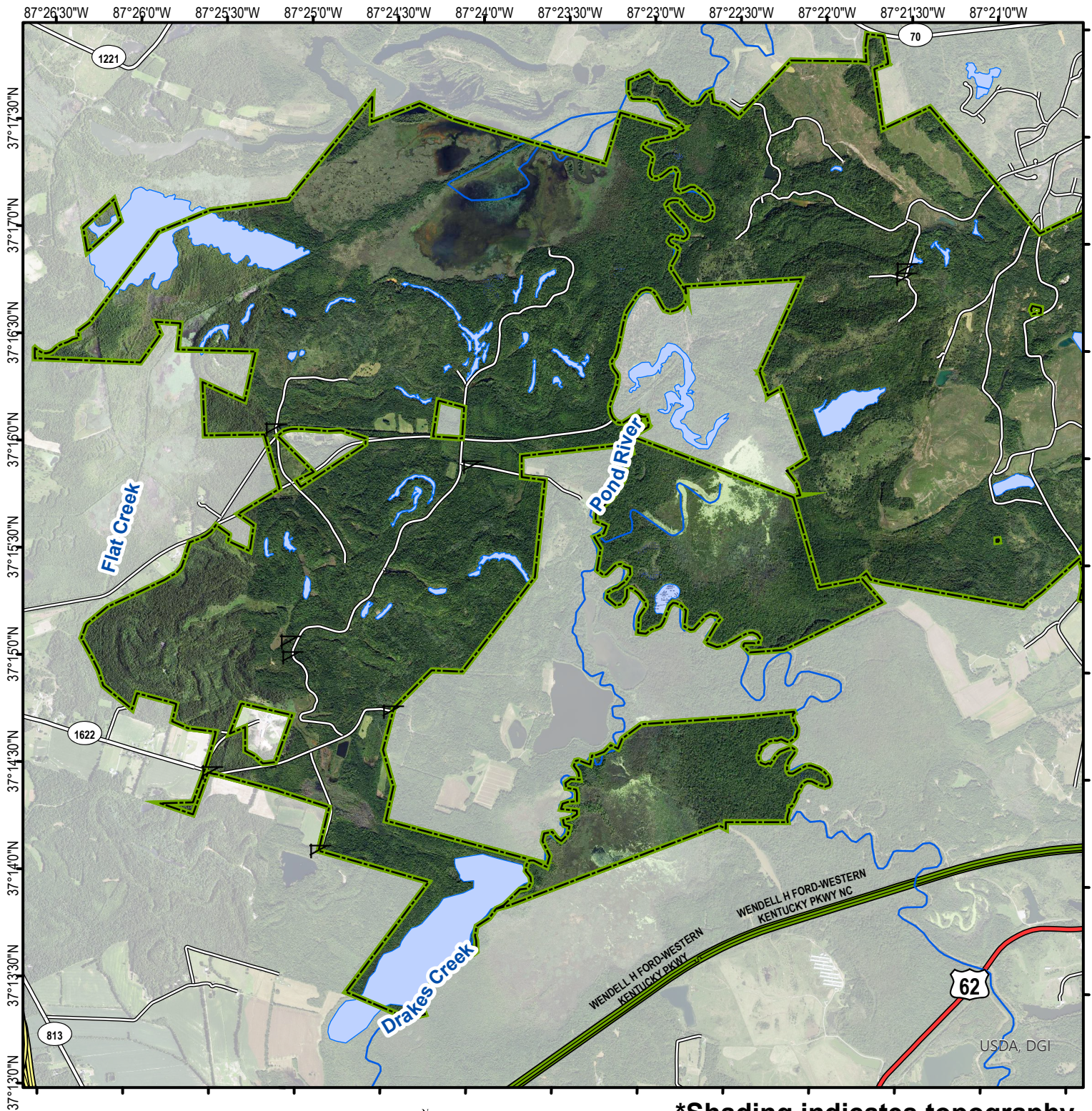
\*Shading indicates topography

## Note to Map Users

Map prepared by Kentucky Department of Fish & Wildlife Resources (KDFWR). Although KDFWR strives for accuracy, data used to create this map are from a variety of sources and dates; as such, KDFWR makes no representations regarding the accuracy or fitness for use of the information furnished herein.

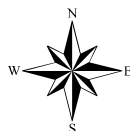


# Peabody WMA West Unit 1



A map legend and additional information are provided on PDF pages that accompany this map.

Publication Date: 01/09/2025  
Imagery from Farm Service Agency 2018



0 0.25 0.5 1 1.5 2 Miles

Scale 1:46,605

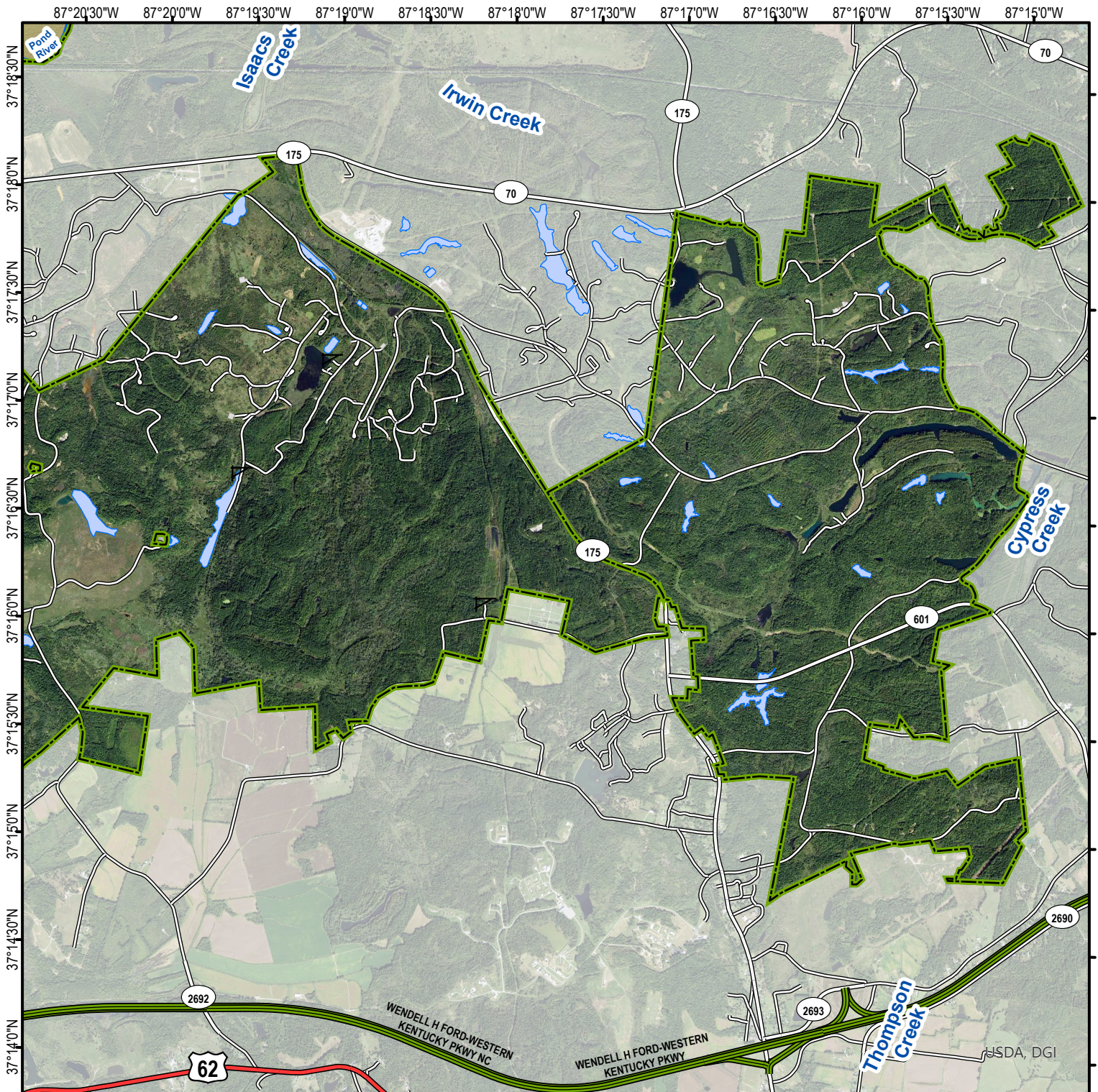
**\*Shading indicates topography**

## Note to Map Users

Map prepared by Kentucky Department of Fish & Wildlife Resources (KDFWR). Although KDFWR strives for accuracy, data used to create this map are from a variety of sources and dates; as such, KDFWR makes no representations regarding the accuracy or fitness for use of the information furnished herein.

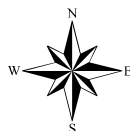


# Peabody WMA West Unit 2



A map legend and additional information are provided on PDF pages that accompany this map.

Publication Date: 01/09/2025  
Imagery from Farm Service Agency 2018



0 0.25 0.5 1 1.5 2 Miles

Scale 1:46,605

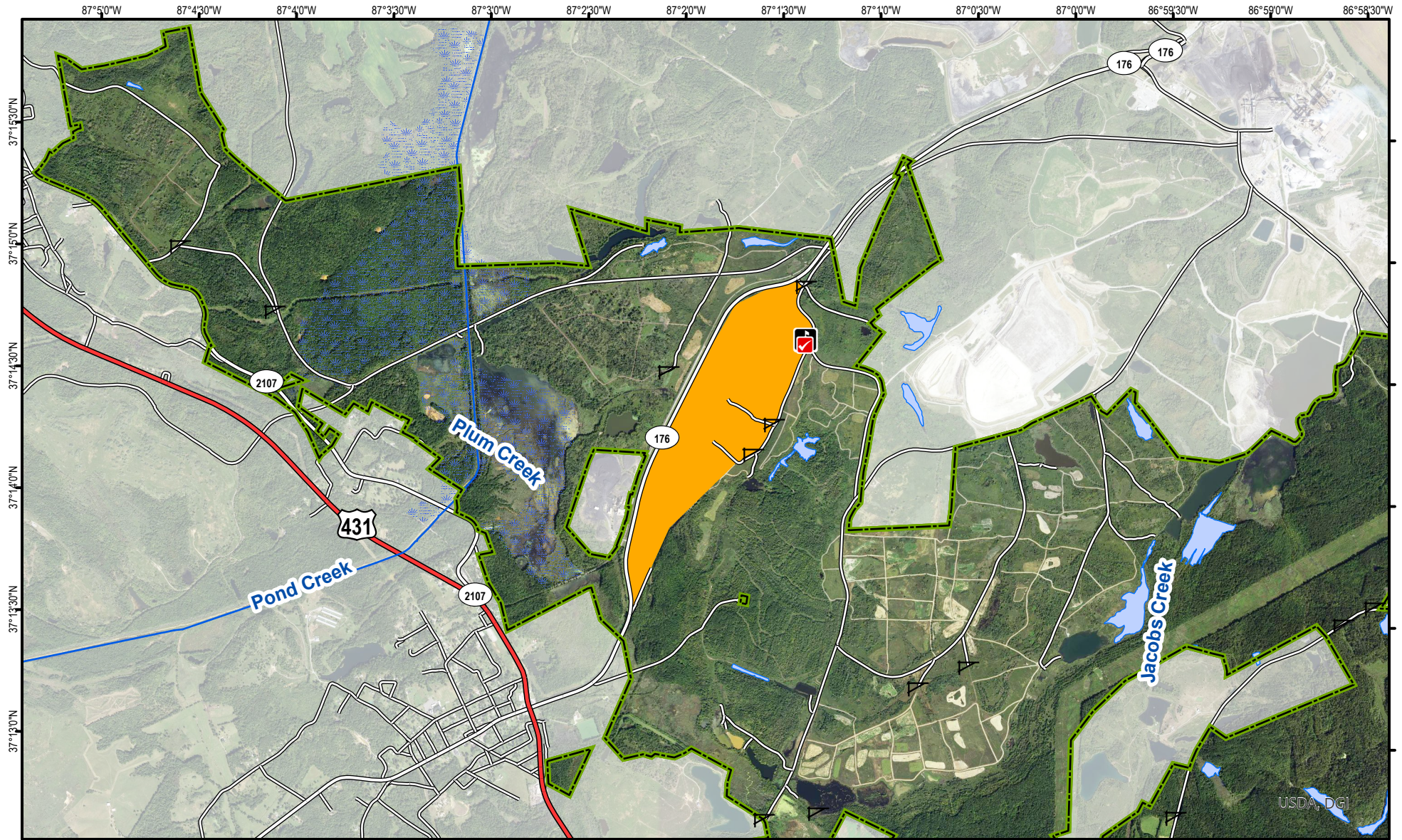
**\*Shading indicates topography**

## Note to Map Users

Map prepared by Kentucky Department of Fish & Wildlife Resources (KDFWR). Although KDFWR strives for accuracy, data used to create this map are from a variety of sources and dates; as such, KDFWR makes no representations regarding the accuracy or fitness for use of the information furnished herein.

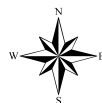


# Peabody WMA Central Unit 1



A map legend and additional information are provided on PDF pages that accompany this map.

Publication Date: 01/09/2025  
Imagery from Farm Service Agency 2018



0 0.28 0.55 1.1 1.65 2.2 Miles

Scale 1:40,842

\*Shading indicates topography

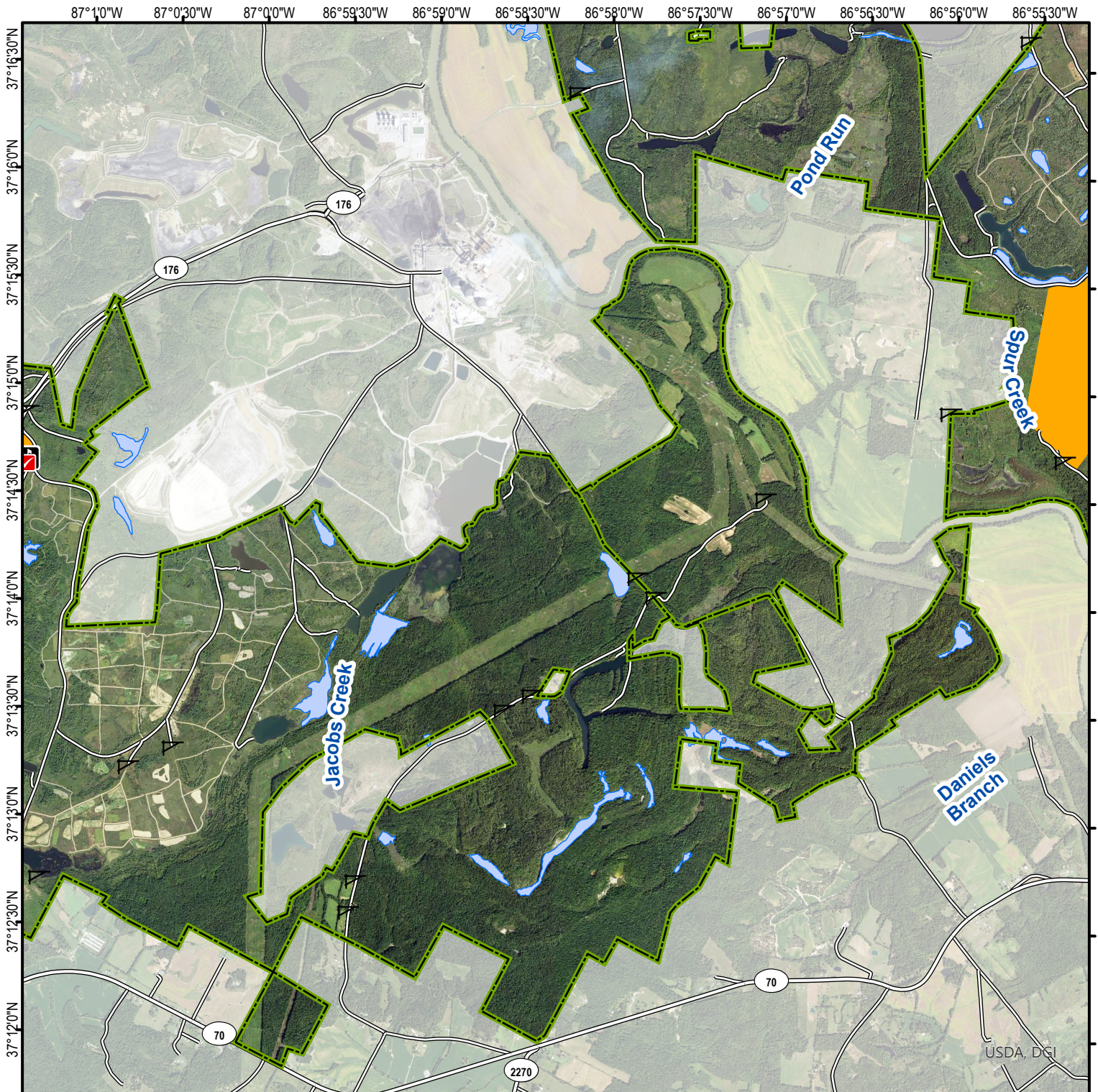
## Note to Map Users

Map prepared by Kentucky Department of Fish & Wildlife Resources (KDFWR). Although KDFWR strives for accuracy, data used to create this map are from a variety of sources and dates; as such, KDFWR makes no representations regarding the accuracy or fitness for use of the information furnished herein.



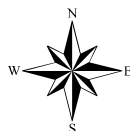


# Peabody WMA Central Unit 2



A map legend and additional information are provided on PDF pages that accompany this map.

Publication Date: 01/09/2025  
Imagery from Farm Service Agency 2018



**\*Shading indicates topography**

## Note to Map Users

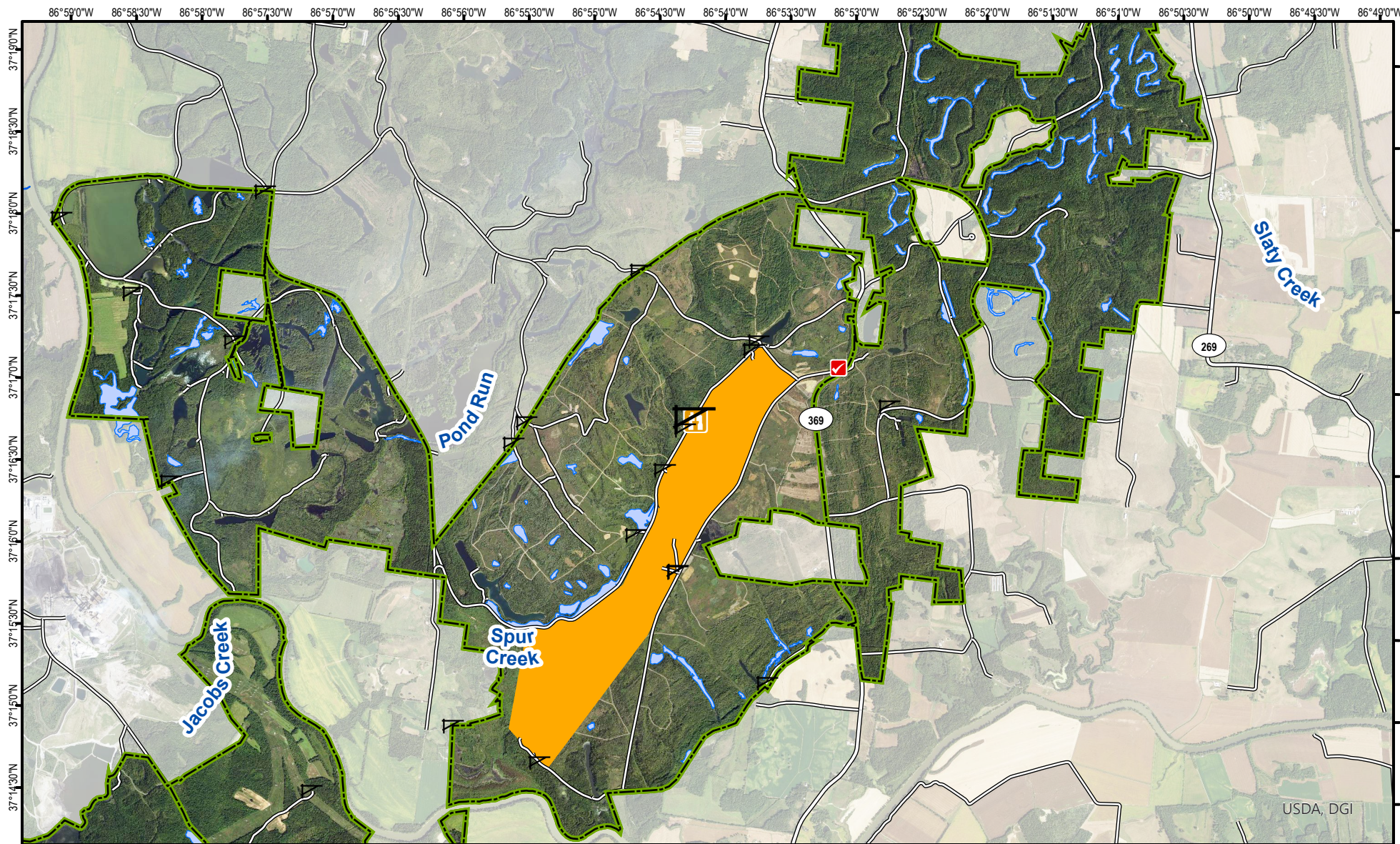
Map prepared by Kentucky Department of Fish & Wildlife Resources (KDFWR). Although KDFWR strives for accuracy, data used to create this map are from a variety of sources and dates; as such, KDFWR makes no representations regarding the accuracy or fitness for use of the information furnished herein.

0 0.25 0.5 1 1.5 2 Miles

Scale 1:46,605

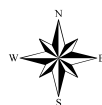


# Peabody WMA East Unit



A map legend and additional information are provided on PDF pages that accompany this map.

Publication Date: 01/09/2025  
Imagery from Farm Service Agency 2018



0 0.4 0.8 1.6 2.4 3.2 Miles

Scale 1:60,931

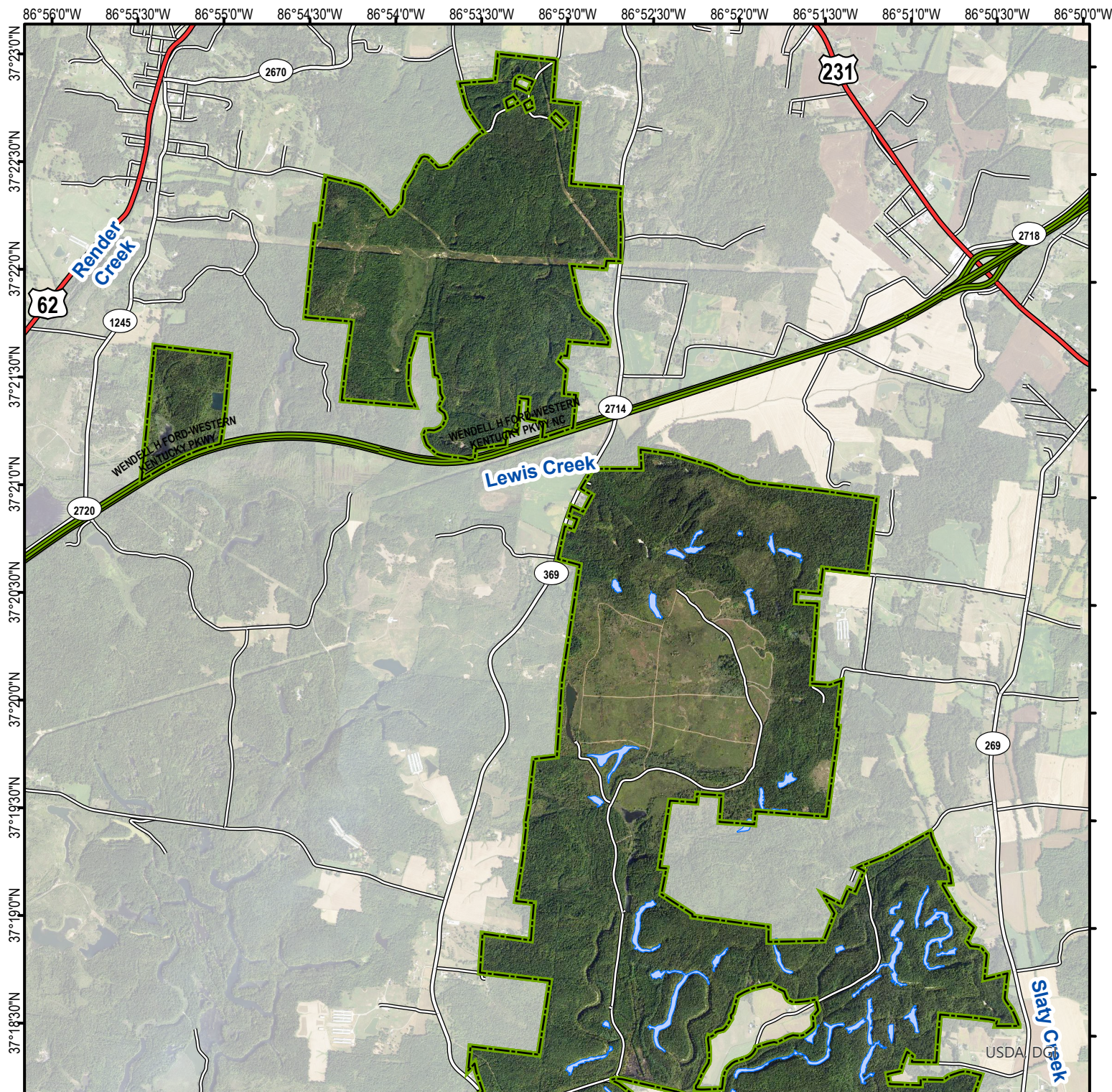
\*Shading indicates topography

## Note to Map Users

Map prepared by Kentucky Department of Fish & Wildlife Resources (KDFWR). Although KDFWR strives for accuracy, data used to create this map are from a variety of sources and dates; as such, KDFWR makes no representations regarding the accuracy or fitness for use of the information furnished herein.



# Peabody WMA McHenry Unit



A map legend and additional information are provided on PDF pages that accompany this map.

Publication Date: 01/09/2025  
Imagery from Farm Service Agency 2018



**\*Shading indicates topography**

## Note to Map Users

Map prepared by Kentucky Department of Fish & Wildlife Resources (KDFWR). Although KDFWR strives for accuracy, data used to create this map are from a variety of sources and dates; as such, KDFWR makes no representations regarding the accuracy or fitness for use of the information furnished herein.

0 0.25 0.5 1 1.5 2 Miles

Scale 1:46,605

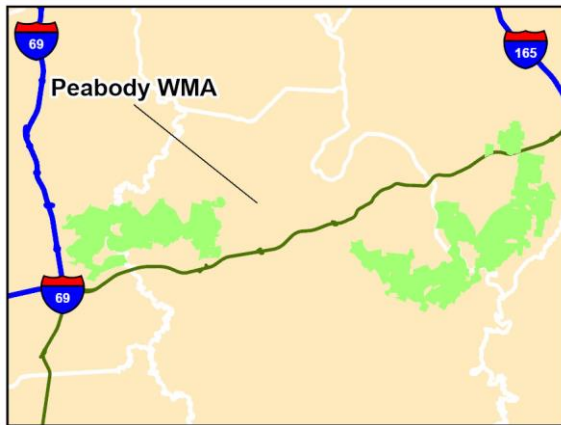


# Peabody WMA Information

## Public Hunting Area Location



## Regional Locator



## WMA Overview

**Location & Size:** Ohio, Hopkins & Muhlenberg counties; 40,747 acres.

**Contact** (270) 476-1889

**Elevation** minimum 324 feet, maximum 654 feet.

**Area Habitat** mostly forest: open land 23%, forest 62%, wetland 10%, open water 4%.

**Entrance GPS coordinates:** Latitude N 37.27995, Longitude W -86.90344

**Directions & Description:** WMA consists of numerous separated tracts located along Wendell H Ford PKWY, between Edward T Breathitt PKWY (Pennyrile) west to William H Natcher PKWY east. Access points include KY 70, KY 369, KY 176, KY 269 and US 62.

Sinclair tract contains a waterfowl refuge around Goose Lake that is closed from Oct. 15-March 15. In Ohio County the waterfowl refuge around South and Island lakes is also closed from Oct. 15-March 15.

Rough terrain from swampland to high ridges and deep pits; primarily reclaimed coal-mined land with numerous excavated ridges and water-filled strip mine pits (visitors should be wary). Excellent birding and fishing opportunities. Good deer, turkey, waterfowl and small game hunting. One of the better areas for quail hunting in the state. Horseback riding allowed on maintained roads.

Shooting range (for single projectile firearms only; no shotshells or pistols allowed) open Tuesday-Saturday 9:00 AM-sunset & Sundays noon-sunset. Check online calendar or call Area office for closures or events.

Mobility impaired access to permit holders in designated area, which is currently the Sinclair unit. A user permit (\$15.00) required to enter the area for any type of use, can be purchased wherever Kentucky hunting and fishing licenses are sold.

Upland Bird and Rabbit Hunters **MUST** check in/out at Kiosks using HangTag (last page of map document).

Owned/leased by Kentucky Department of Fish and Wildlife Resources.

## Online Resources

Public Hunting Area users must abide by the Kentucky hunting, trapping, and fishing regulations. It is incumbent on persons using Public Hunting Areas to become familiar with these regulations. Kentucky Department of Fish & Wildlife Resources provides these regulations on our Web site at [fw.ky.gov](http://fw.ky.gov) or by calling 1-800-858-1549.



# Wildlife Management Area Map Notes & Legend

## NOTE TO MAP USERS:

For most WMA maps the landscape is depicted using a combination of elevation contours, hillshading and a green tint indicating woodland areas that is derived from satellite imagery. On WMAs that are relatively small or have a history of surface mining aerial photography is used.

## WMA Map Legend

	WMA Office		WMA Boundary		Populated Place
	Information Kiosk		Aerial imagery		Kentucky Boundary
	Check station		Other Public Hunting Areas		Interstate Highway
	Mobility-impaired Hunting Blind		Area Off Limits		Kentucky Parkway
	Trailhead		No Hunting		U.S. Highway
	Horseback Trailhead		Seasonally Restricted Access		State Highway
	Parking Lot		Mobility Impaired Hunting Area		Local Road
	Picnic Area		Primitive Hunting Only		Forest Service Road
	Restrooms		Open Water		Active Railroad
	Wildlife Viewing Site		Wetland		Abandoned Railroad
	Interpretive Site		Woodland		Federal Recreation Trail
	Retriever Training Site				WMA Road
	Gate				WMA Foot Trail
	Campground				WMA Horse Trail
	Cemetery				Gas Pipeline
	Corps of Engineers Office				Powerline
	Waterfowl Blind				Rivers and Streams
	Any Boat				Dam
	Bank Access				Trout Waters
	Carrydown Only				Elevation Contour
	Fishing Pier				
	Small Boat Only				
	Shooting Range				
	State Park Office				