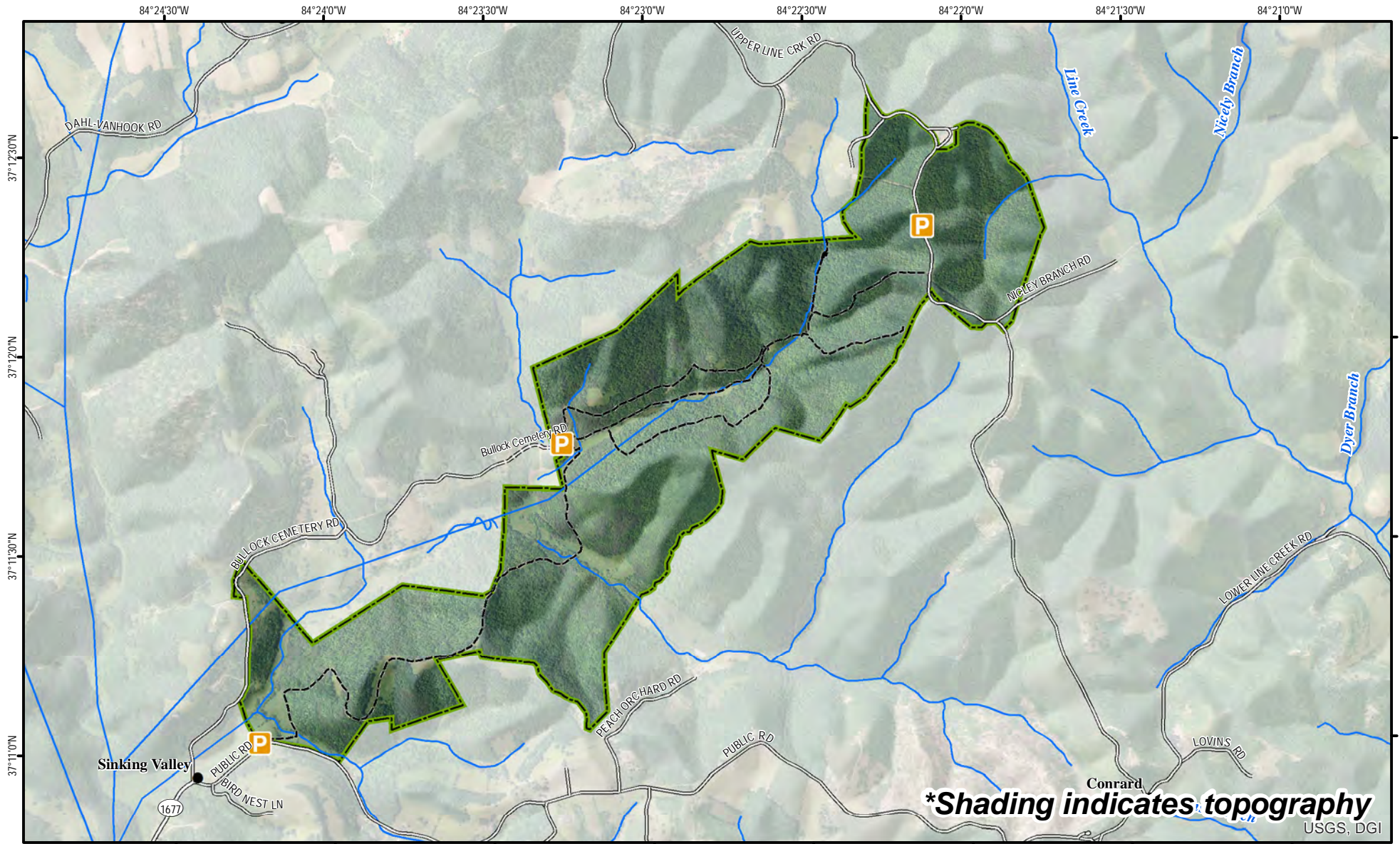


Ping-Sinking Valley WMA



A map legend and additional information are provided on PDF pages that accompany this map.

Publication Date: 11/22/2016
 Imagery from Farm Service Agency 2016



Scale 1:25,000



Note to Map Users

Map prepared by Kentucky Department of Fish & Wildlife Resources (KDFWR). Although KDFWR strives for accuracy, data used to create this map are from a variety of sources and dates; as such, KDFWR makes no representations regarding the accuracy or fitness for use of the information furnished herein.

Ping-Sinking Valley WMA Information

Public Hunting Area Location



Regional Locator



WMA Overview

Location & Size: Pulaski County, 805 acres

Contact (606) 877-8409

Elevation Minimum 850 ft, Maximum 1250 ft

Area Habitat mostly forest: open land 7%, forest 93%, wetland 0%, open water 0%.

Entrance GPS coordinates: Latitude N 37.195881, Longitude W -84.388573

Directions & Description:

Northwest entrance:

From Somerset: Travel east on HWY 80. Turn left at Shopville School (0.5 mi past the HWY 461 interchange), then turn left again onto Shopville Road. Travel 0.3 miles and turn left onto Dahl Road (HWY 1677). Travel 5.3 miles to the end of state maintenance of Dahl Road. Turn left on Bullock Cemetery Road, travel 1 mile to the stop sign, then turn right to continue on Bullock Cemetery Road. Travel 0.8 miles to the parking area at the end of the road.

From London: Travel west approximately 16.5 miles and turn right onto Hawk Road. Travel 1.4 miles and turn left on Public Road. Travel 1.5 miles and turn right on Bullock Cemetery Road. Travel 1 mile to the stop sign, then turn right to continue on Bullock Cemetery Road. Travel 0.8 miles to the parking area at the end of the road.

Eastern Entrance:

From Somerset: Travel east on HWY 80. Turn left at Shopville School (0.5 mi past the HWY 461 interchange), then turn left again onto Shopville Road. Travel 0.3 miles and turn left onto Dahl Road (HWY 1677). Travel 5.3 miles to the end of state maintenance of Dahl Road. Continue straight on Public Road 3.5 miles and turn left on Upper Line Fork Road. Travel approximately 2 miles to the parking area on the right.

From London: Travel approximately 14 miles west on HWY 80. Turn right on Conrad Road. Travel 3.3 miles and turn right on Public Road. Travel 0.1 mile and turn left on Upper Line Creek Road and then approximately 2 miles to the parking area on the right.

The area is primarily forested with approximately 54 acres of openings scattered throughout the property. The terrain is hilly with some steep terrain and sinkholes along the creek. Moderate to good populations of deer, turkey, squirrels, furbearers and songbirds are present on the area.

There are no developed facilities and interior trails are maintained for foot travel only. No ATVs, camping, or horseback riding is allowed on the property. The area is open to public hunting. Check the Kentucky Hunting and Trapping Guide for seasons and dates.

Online Resources






Public Hunting Area users must abide by the Kentucky hunting, trapping, and fishing regulations. It is incumbent on persons using Public Hunting Areas to become familiar with these regulations. Kentucky Department of Fish & Wildlife Resources provides these regulations on our Web site at fw.ky.gov or by calling 1-800-858-1549.

Wildlife Management Area Map Notes & Legend

NOTE TO MAP USERS:

For most WMA maps the landscape is depicted using a combination of elevation contours, hillshading and a green tint indicating woodland areas that is derived from satellite imagery. On WMAs that are relatively small or have a history of surface mining aerial photography is used.

WMA Map Legend

	WMA Office		WMA Boundary		Populated Place
	Information Kiosk		Aerial photograph		Kentucky Boundary
	Check station		Other Public Hunting Areas		Interstate Highway
	Mobility-impaired Hunting Blind		Area Off Limits		Kentucky Parkway
	Trailhead		No Hunting		U.S. Highway
	Horseback Trailhead		Seasonally Restricted Access		State Highway
	Parking Lot		Mobility Impaired Hunting Area		Local Road
	Picnic Area		Primitive Hunting Only		Forest Service Road
	Restrooms		Foot Traffic Only		Active Railroad
	Wildlife Viewing Site		Open Water		Abandoned Railroad
	Interpretive Site		Wetland		Federal Recreation Trail
	Retriever Training Site		Woodland		WMA Road
	Gate				WMA Foot Trail
	Campground				WMA Horse Trail
	Cemetery				Gas Pipeline
	Corps of Engineers Office				Powerline
	Waterfowl Blind				Rivers and Streams
	Shooting Range				Dam
	Established Bank Access				Trout Waters
	Fishing Pier				Elevation Contour
	Carrydown Launch				
	Small Boat Ramp				
	Large Boat Ramp				
	State Park Office				