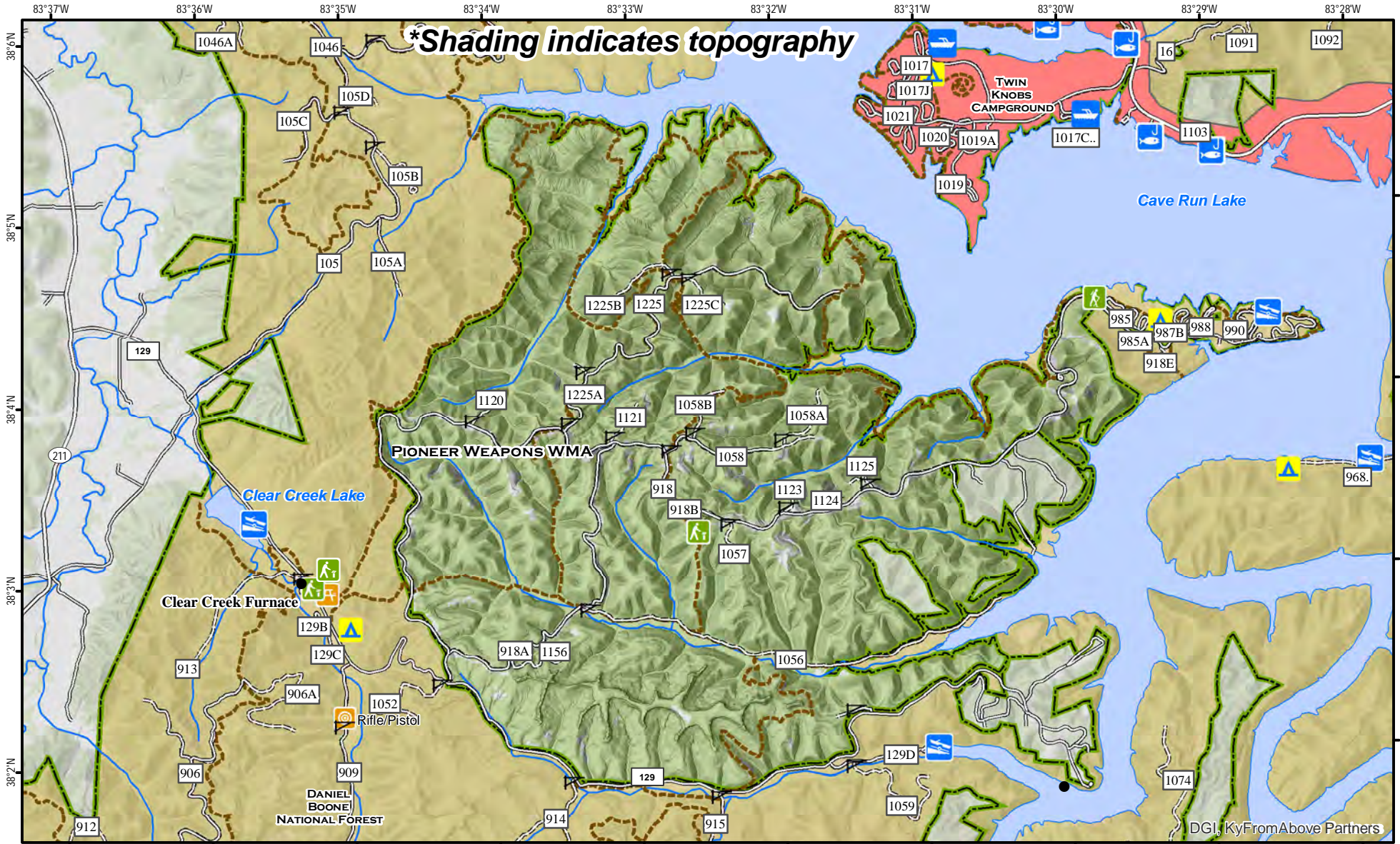


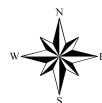


Pioneer Weapons Wildlife Management Area



A map legend and additional information are provided on PDF pages that accompany this map.

Publication Date: 12/3/2018
Land Classification from National Land Cover Database 2011



Note to Map Users

Map prepared by Kentucky Department of Fish & Wildlife Resources (KDFWR). Although KDFWR strives for accuracy, data used to create this map are from a variety of sources and dates; as such, KDFWR makes no representations regarding the accuracy or fitness for use of the information furnished herein.

Pioneer Weapons WMA Information

Public Hunting Area Location



Regional Locator



WMA Overview

Location & Size: Bath & Menifee counties, 7,731 acres.

Contact: Cumberland Ranger District (606) 784-6428; Daniel Boone National Forest, Supervisor's Office (859) 745-3100

Elevation: minimum 744 feet, maximum 1315 feet.

Entrance GPS coordinates: Latitude N 38.04382, Longitude W -83.57195

Area Habitat: mostly forest: open land 5%, forest 98%, wetland 0%, open water 0%.

Directions & Description:

Located approximately 10 miles south of Morehead, KY. Salt Lick, KY located on US-60 can be accessed via I-64 exits 123 and 133. Road access within the WMA is provided by the Zilpo Scenic Byway (FR 918) north of FR 129, Buck Creek RD (FR 918A) that loops around to meet Zilpo Scenic Byway and Leatherwood RD (FR 129). Some gated side roads may be opened for seasonal hunts. The WMA is surrounded by the Daniel Boone National Forest and Cave Run Lake. It is almost completely forested with scattered openings. Terrain is rough with some gently sloping areas on ridge tops and creek valleys. Hiking trails are available.

The U.S. Forest Service managed Zilpo Campground is adjacent to the WMA and provides access to Cave Run Lake. The Cumberland Ranger District Visitor Center is located north of the WMA near Cave Run Lake Dam on KY 801.

Hunting limited to longbow, crossbow and muzzle-loading firearms only. For hunting information contact Kentucky Department of Fish and Wildlife Resources; additional information available from U.S. Forest Service, 1700 Bypass Road, Winchester, KY 40391.

Owned by U.S. Forest Service.

Online Resources

Public Hunting Area users must abide by the Kentucky hunting, trapping, and fishing regulations. It is incumbent on persons using Public Hunting Areas to become familiar with these regulations. Kentucky Department of Fish & Wildlife Resources provides these regulations on our Web site at fw.ky.gov or by calling 1-800-858-1549.

Wildlife Management Area Map Notes & Legend

NOTE TO MAP USERS:

For most WMA maps the landscape is depicted using a combination of elevation contours, hillshading and a green tint indicating woodland areas that is derived from satellite imagery. On WMAs that are relatively small or have a history of surface mining aerial photography is used.

WMA Map Legend

	WMA Office		WMA Boundary		Populated Place
	Information Kiosk		Aerial imagery		Kentucky Boundary
	Check station		Other Public Hunting Areas		Interstate Highway
	Mobility-impaired Hunting Blind		Area Off Limits		Kentucky Parkway
	Trailhead		No Hunting		U.S. Highway
	Horseback Trailhead		Seasonally Restricted Access		State Highway
	Parking Lot		Mobility Impaired Hunting Area		Local Road
	Picnic Area		Primitive Hunting Only		Forest Service Road
	Restrooms		Open Water		Active Railroad
	Wildlife Viewing Site		Wetland		Abandoned Railroad
	Interpretive Site		Woodland		Federal Recreation Trail
	Retriever Training Site				WMA Road
	Gate				WMA Foot Trail
	Campground				WMA Horse Trail
	Cemetery				Gas Pipeline
	Corps of Engineers Office				Powerline
	Waterfowl Blind				Rivers and Streams
	Any Boat				Dam
	Bank Access				Trout Waters
	Carrydown Only				Elevation Contour
	Fishing Pier				
	Small Boat Only				
	Shooting Range				
	State Park Office				