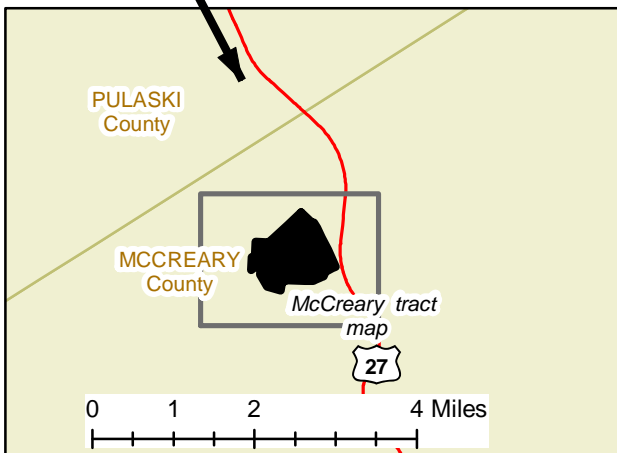
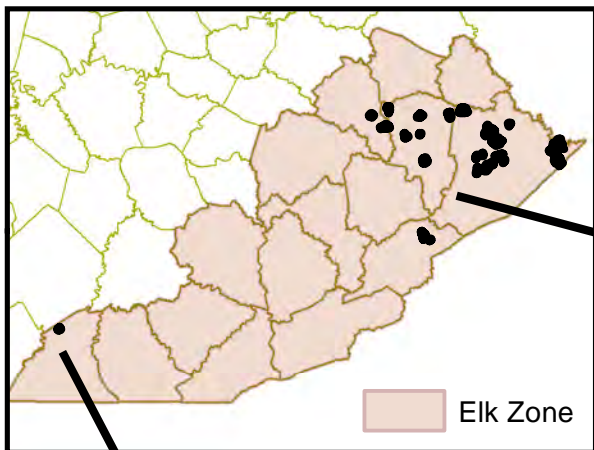




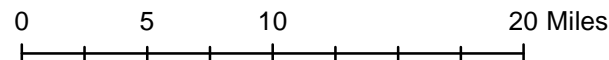
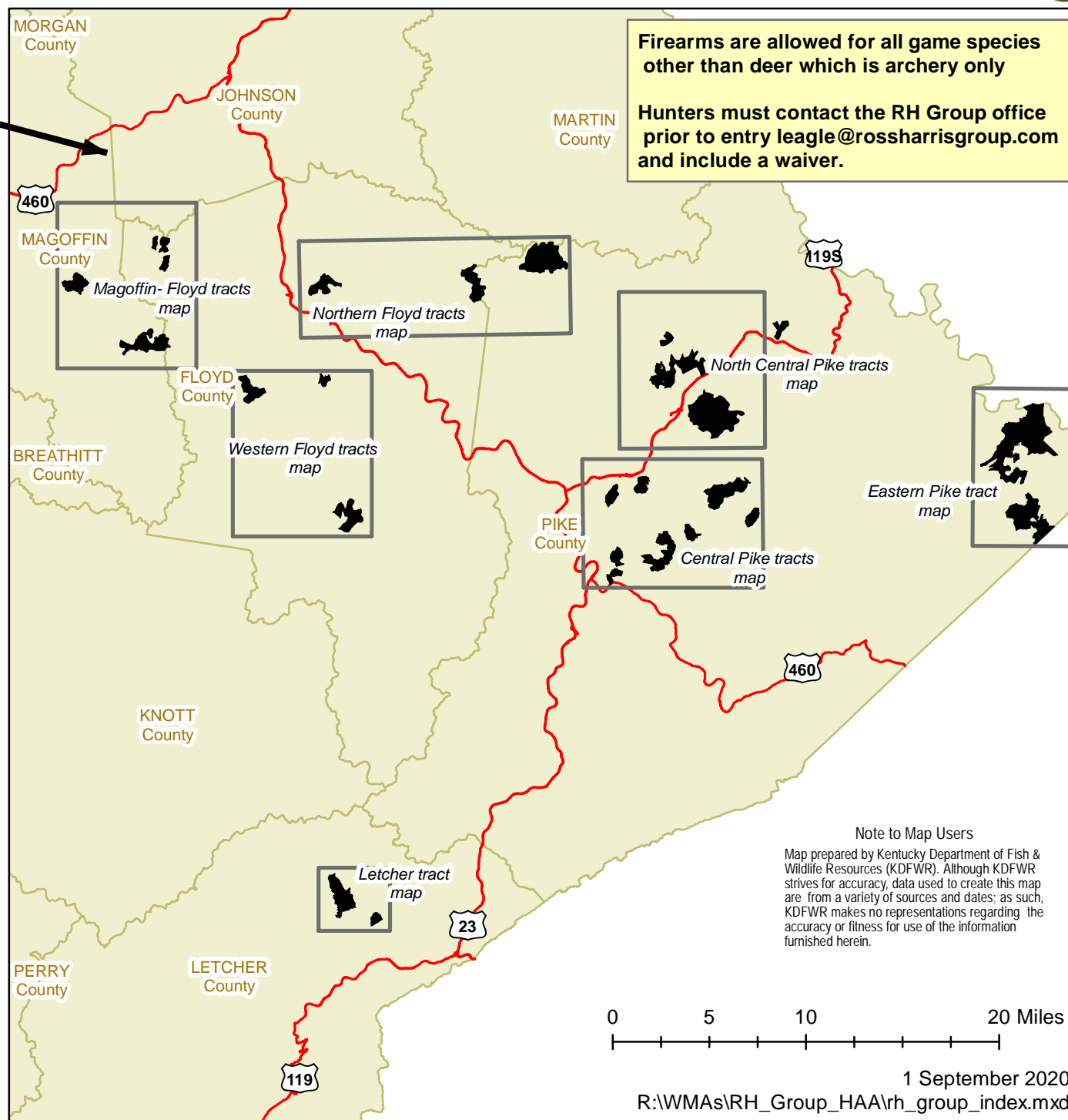
RH Group Hunting Access Area - index map



- RH Group Hunting Access Area
- US Highways
- County Boundary

A map legend and additional information are provided on PDF pages that accompany this map.

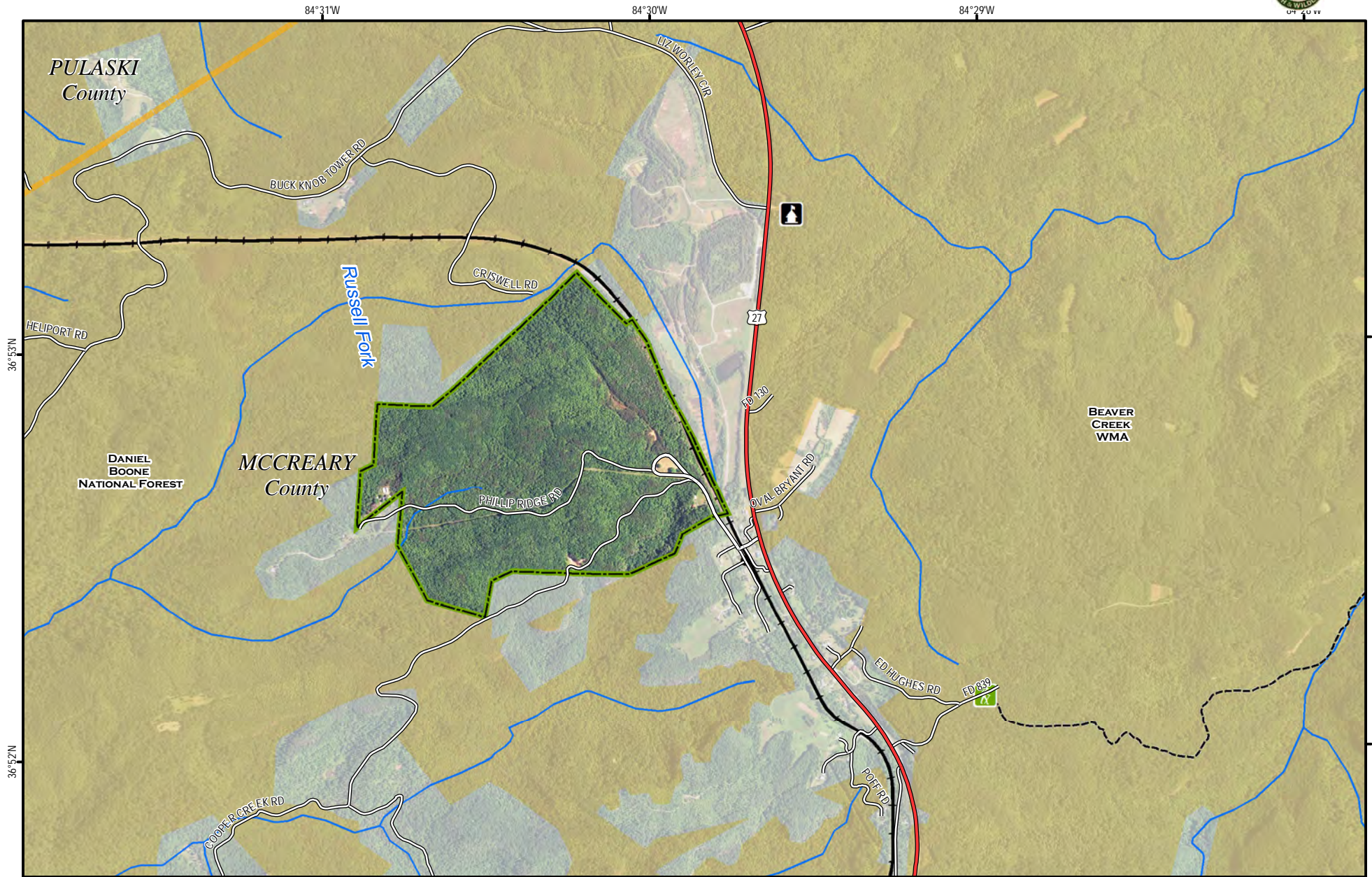
Publication Date: 8/27/2020



1 September 2020

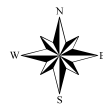
R:\WMAs\RH_Group_HAA\rh_group_index.mxd

RH Group Hunting Access Area - McCreary tract



A map legend and additional information are provided on PDF pages that accompany this map.

Publication Date: 9/13/2018
Imagery from Farm Service Agency 2016



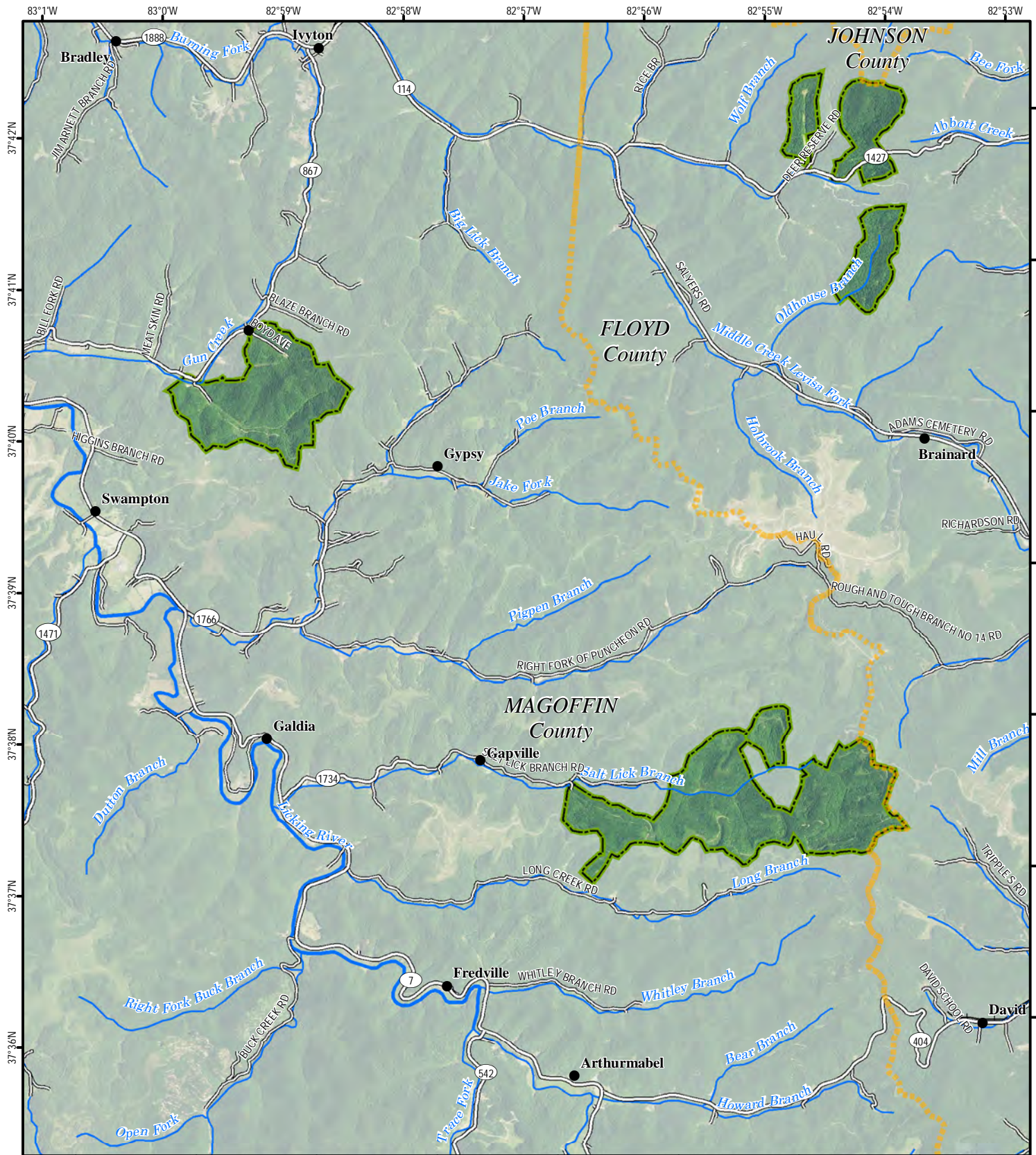
Scale 1:24,000



Note to Map Users

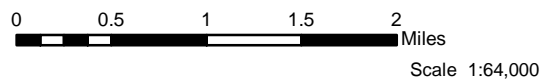
Map prepared by Kentucky Department of Fish & Wildlife Resources (KDFWR). Although KDFWR strives for accuracy, data used to create this map are from a variety of sources and dates; as such, KDFWR makes no representations regarding the accuracy or fitness for use of the information furnished herein.

RH Group Hunting Access Area - Magoffin Floyd Tracts



A map legend and additional information are provided on PDF pages that accompany this map.

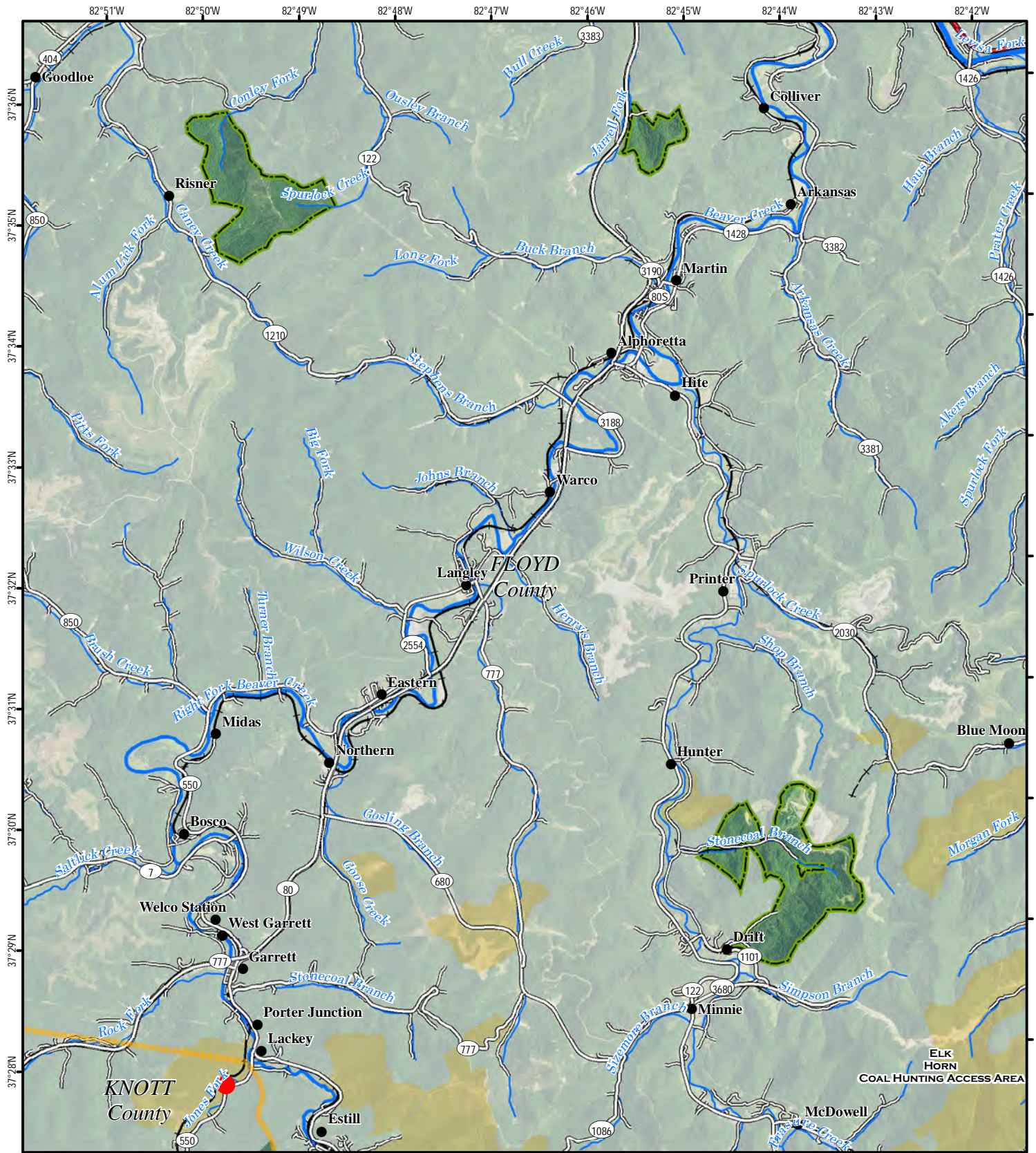
Publication Date: 11/8/2018
Imagery from Farm Service Agency 2016



Note to Map Users

Map prepared by Kentucky Department of Fish & Wildlife Resources (KDFWR). Although KDFWR strives for accuracy, data used to create this map are from a variety of sources and dates; as such, KDFWR makes no representations regarding the accuracy or fitness for use of the information furnished herein.

RH Group Hunting Access Area - Western Floyd Tracts



A map legend and additional information are provided on PDF pages that accompany this map.

Publication Date: 9/13/2018
Imagery from Farm Service Agency 2016



0 0.75 1.5 2.25 3 Miles

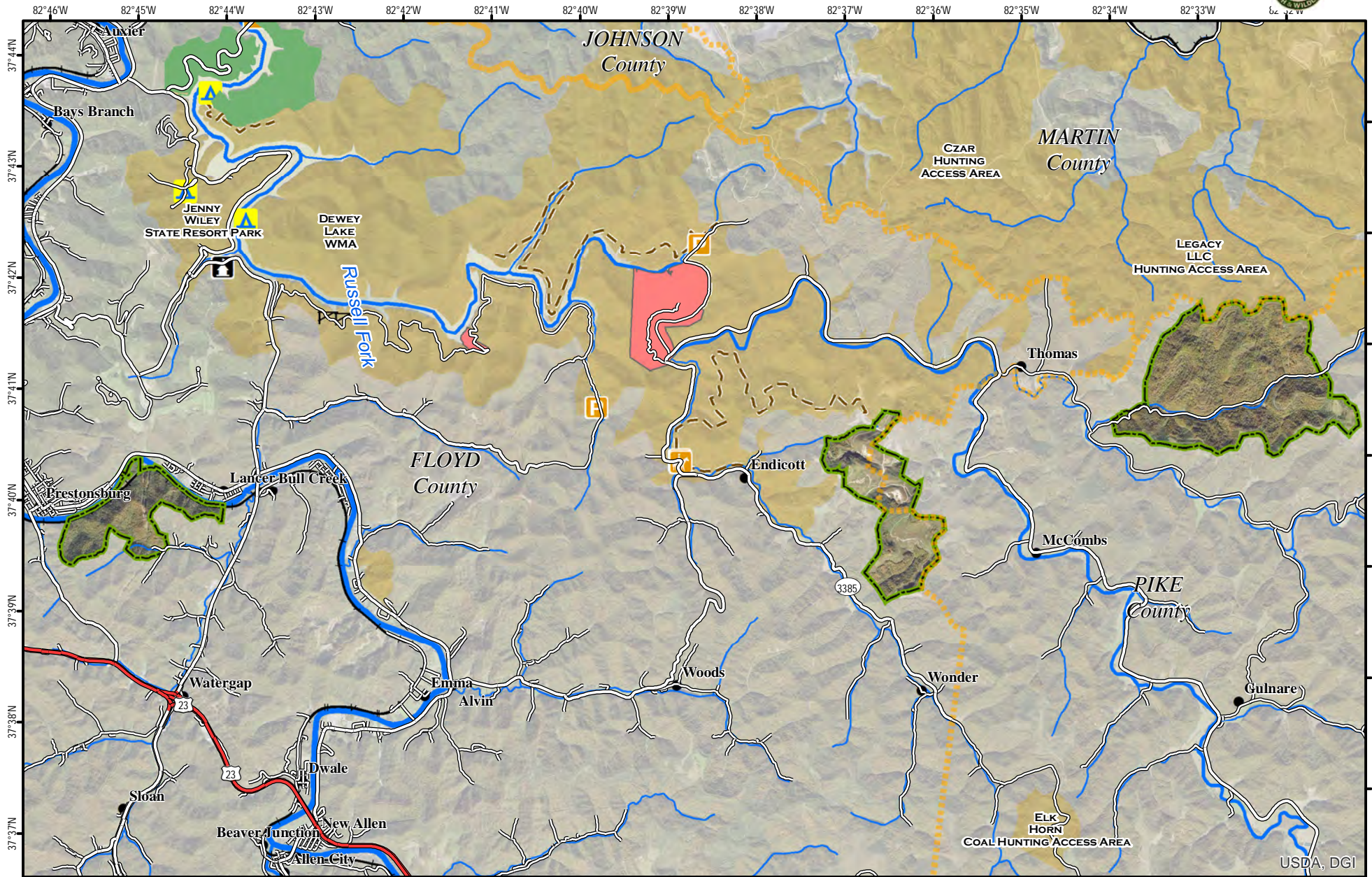
Scale 1:80,000



Note to Map Users

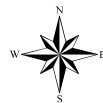
Map prepared by Kentucky Department of Fish & Wildlife Resources (KDFWR). Although KDFWR strives for accuracy, data used to create this map are from a variety of sources and dates; as such, KDFWR makes no representations regarding the accuracy or fitness for use of the information furnished herein.

RH Group Hunting Access Area - Northern Floyd tracts



A map legend and additional information are provided on PDF pages that accompany this map.

Publication Date: 8/27/2020
Imagery from Farm Service Agency 2018



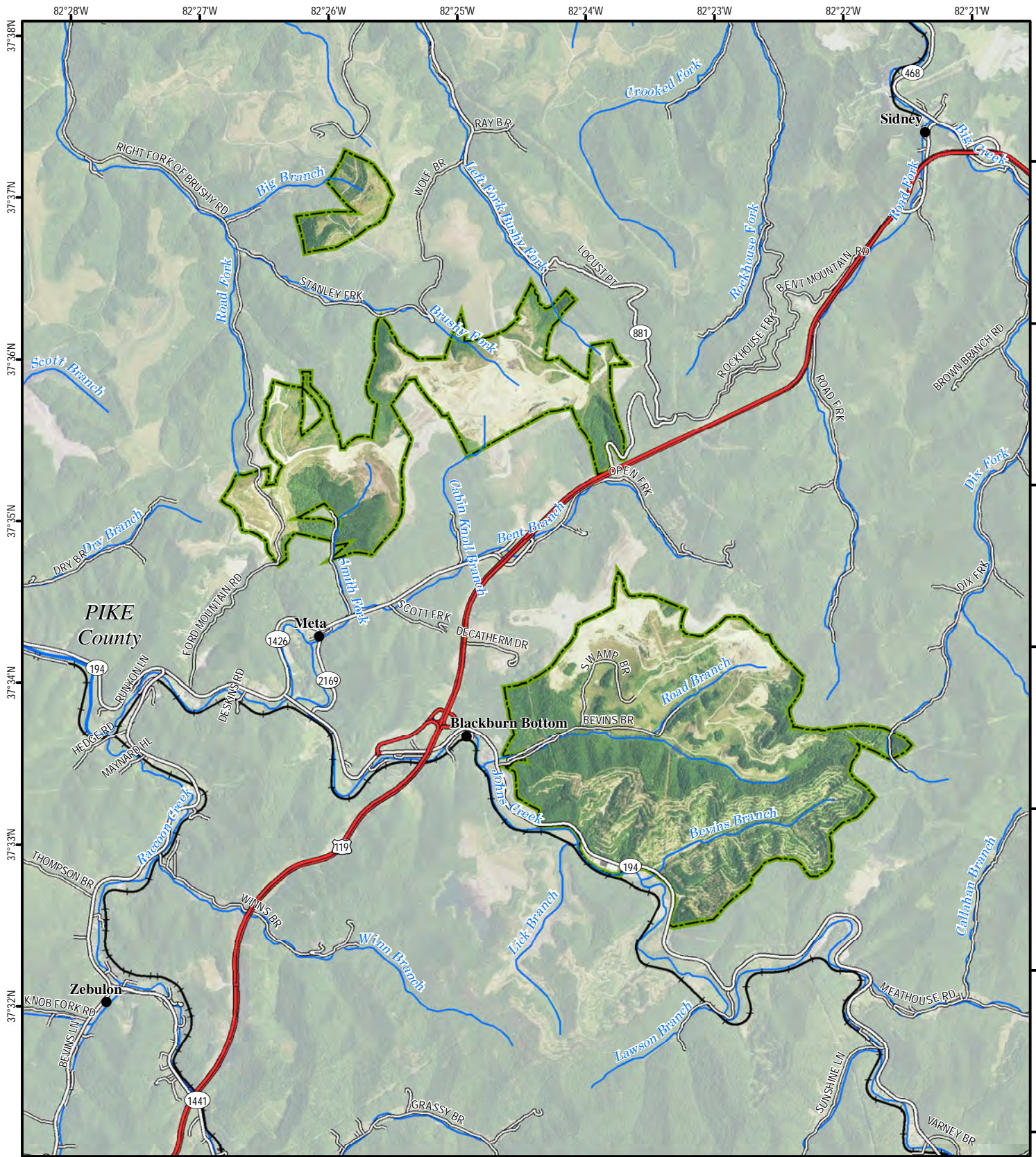
0 1 2 3 4 Miles
Scale 1:88,000



Note to Map Users

Map prepared by Kentucky Department of Fish & Wildlife Resources (KDFWR). Although KDFWR strives for accuracy, data used to create this map are from a variety of sources and dates; as such, KDFWR makes no representations regarding the accuracy or fitness for use of the information furnished herein.

RH Group Hunting Access Area - North Central PikeTract



A map legend and additional information are provided on PDF pages that accompany this map.

Publication Date: 9/13/2018
Imagery from Farm Service Agency 2016



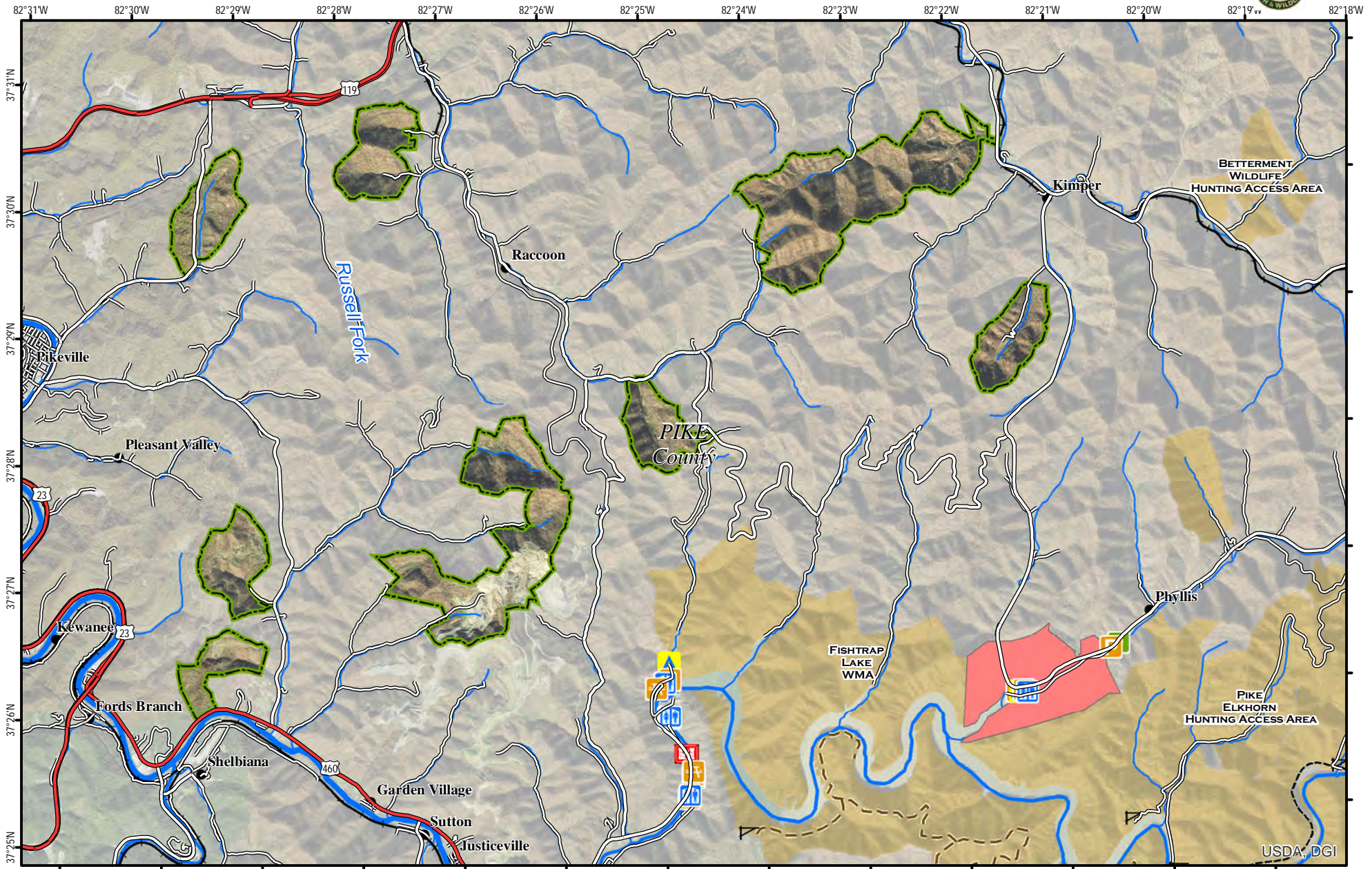
0 0.5 1 1.5 2 Miles
Scale 1:60,000



Note to Map Users

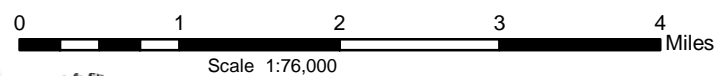
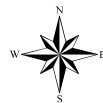
Map prepared by Kentucky Department of Fish & Wildlife Resources (KDFWR). Although KDFWR strives for accuracy, data used to create this map are from a variety of sources and dates; as such, KDFWR makes no representations regarding the accuracy or fitness for use of the information furnished herein.

RH Group Hunting Access Area - Central Pike tracts



A map legend and additional information are provided on PDF pages that accompany this map.

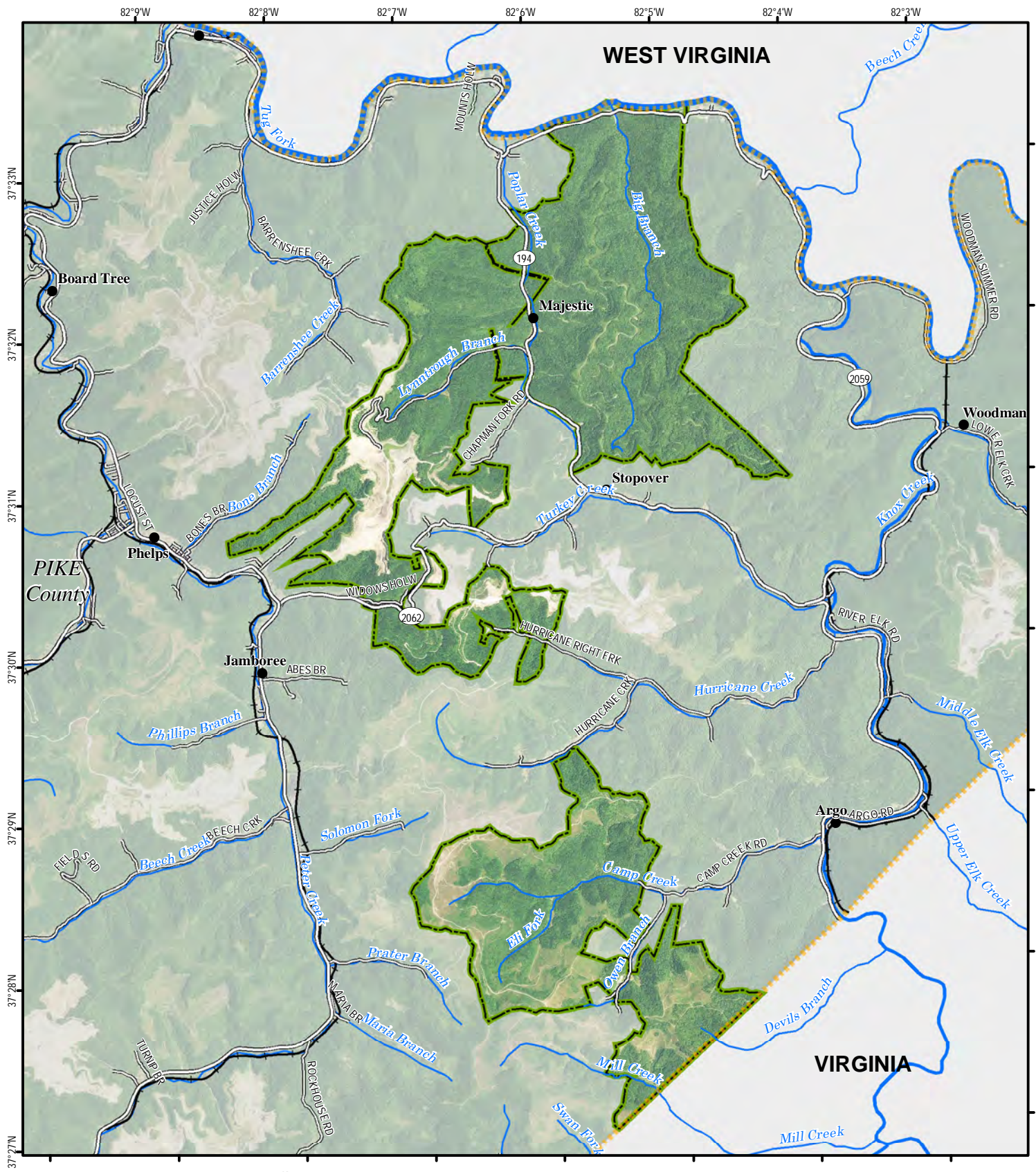
Publication Date: 9/6/2020
Imagery from Farm Service Agency 2018



Note to Map Users

Map prepared by Kentucky Department of Fish & Wildlife Resources (KDFWR). Although KDFWR strives for accuracy, data used to create this map are from a variety of sources and dates; as such, KDFWR makes no representations regarding the accuracy or fitness for use of the information furnished herein.

RH Group Hunting Access Area - Eastern PikeTract



A map legend and additional information are provided on PDF pages that accompany this map.

Publication Date: 8/27/2020
Imagery from Farm Service Agency 2016



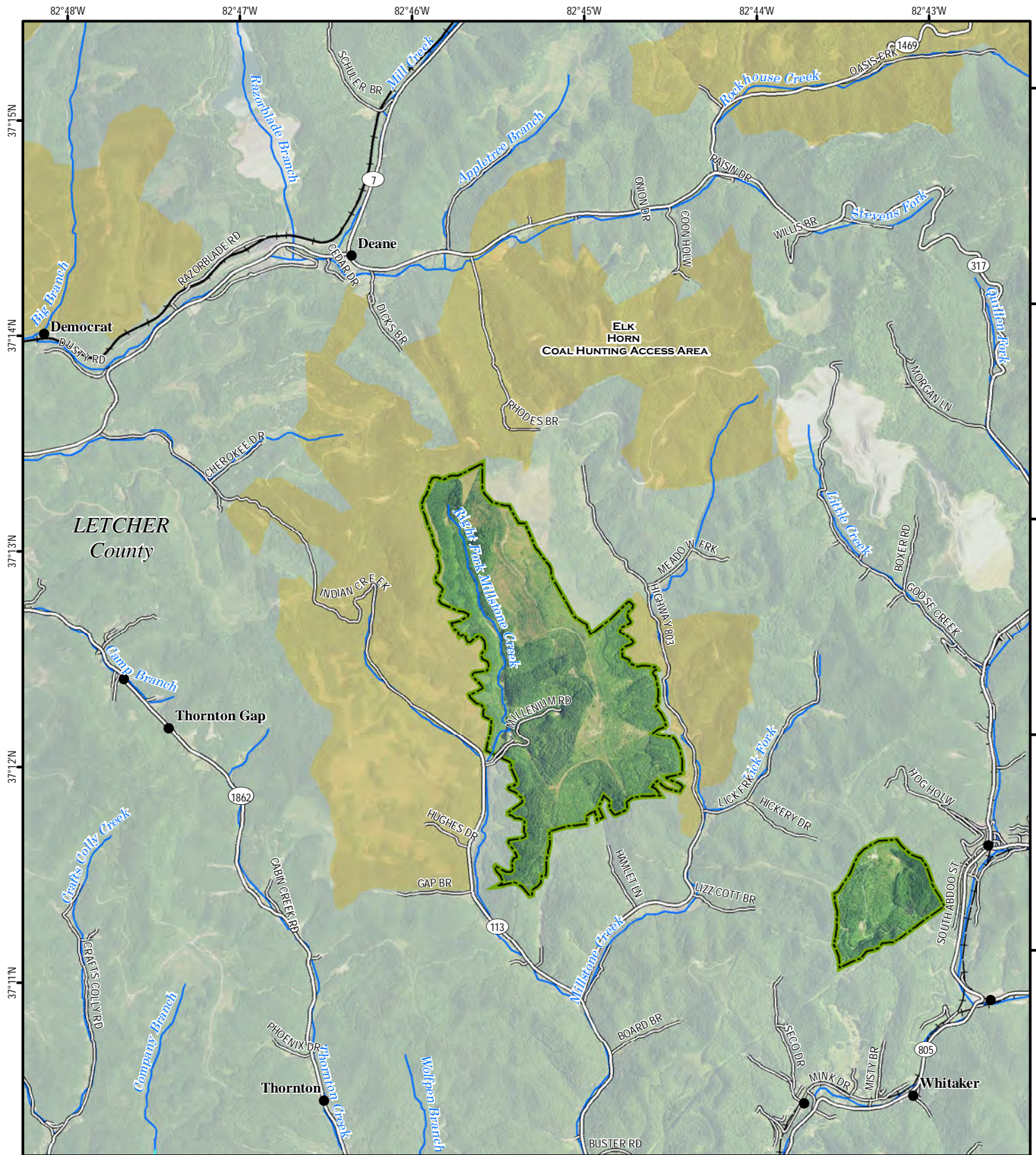
0 0.7 1.4 2.1 2.8 Miles
Scale 1:60,000



Note to Map Users

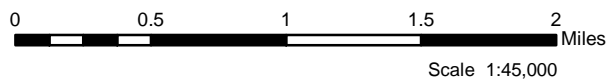
Map prepared by Kentucky Department of Fish & Wildlife Resources (KDFWR). Although KDFWR strives for accuracy, data used to create this map are from a variety of sources and dates; as such, KDFWR makes no representations regarding the accuracy or fitness for use of the information furnished herein.

RH Group Hunting Access Area - Letcher Tracts



A map legend and additional information are provided on PDF pages that accompany this map.

Publication Date: 11/8/2018
Imagery from Farm Service Agency 2016



Note to Map Users

Map prepared by Kentucky Department of Fish & Wildlife Resources (KDFWR). Although KDFWR strives for accuracy, data used to create this map are from a variety of sources and dates; as such, KDFWR makes no representations regarding the accuracy or fitness for use of the information furnished herein.

RH GROUP AND AFFILIATED ENTITIES (collectively "Company")
164 MAIN STREET, SUITE 200
P. O. BOX 279
PIKEVILLE, KENTUCKY 41502
PHONE NO.: 606-437-4091
FAX NO.: 606-432-9528

PERMISSION TO HUNT FORM

I, _____, as _____ of Company, grant permission to _____
(individually/collectively "Hunting Party") to hunt on the Company's property designated as Tract No. _____ of _____ area located in _____ County, Kentucky during the 20____ hunting season. The type of game to be hunted will be _____.

With this permission to hunt the above-named party is granted the right to use the Company's rights of ingress and egress to the said property.

The Company is not responsible for your safety or for your actions or for the safety or actions of others on the Company's property. Please keep this permission to hunt with you while on the Company property. If safety becomes a factor, any security personnel on site have the right to request you leave the property. The above-named party does hereby release and hold the Company harmless from any liability due to negligence, accident, damages, etc. while on the Company property.

The Company expects you to hunt in a legal and ethical manner and to obey all applicable laws. The Company requests that you hunt in a courteous manner and to obey the Hunters' Code of Ethics as published by the Kentucky Department of Fish and Wildlife and to follow the Company's rules as posted on the Kentucky Department of Fish and Wildlife website.

This permission to hunt is not an exclusive right to hunt, and the Company may grant others the right to hunt on this property.

PLEASE HAVE A SAFE AND ENJOYABLE HUNT.

RH Group:

Hunting Party:

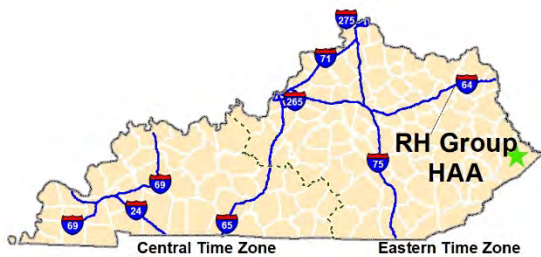
(Guardian signature if under 18)

Date

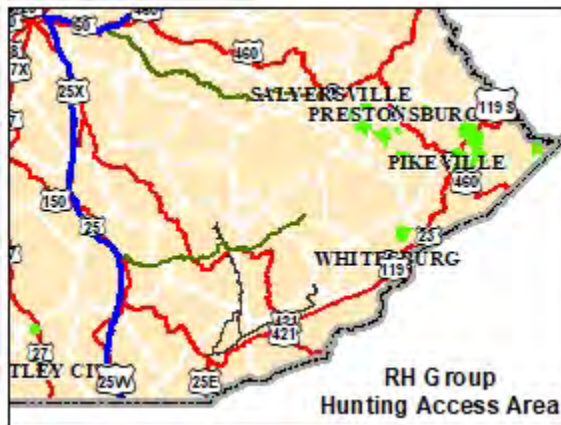
Date

RH Group HAA Information

Public Hunting Area Location



Regional Locator



WMA Overview

Location & Size Floyd, Letcher, Magoffin, McCreary, and Pike counties 20,188 acres.

Contact: Floyd, Magoffin, and Pike Counties, Scott Freidhof 606-783-8634. McCreary County portion Becky Littleton 606-877-8409. Letcher County portion, please contact Wes Hodges 606-654-2533. Contact Joe McDermott 502-892-4432 for elk hunting questions.

Elevation: minimum 600 feet, maximum 2200 feet.

Entrance GPS coordinates: Latitude N 37.50480, Longitude W - 82.35817

Area Habitat: mostly forest: open land 31%, forest 69%, wetland 0%, open water 0%.

Directions & Description:

The property is comprised of reclaimed strip mine habitat of grasses and shrubs, with timbered ridges and drainages throughout. Strip mine habitat is of varying age and classification of reclamation. Use caution if active mining practices are underway, and give large trucks the right-of-way.

Hunters should email a completed waiver form to the RH Group office prior to entry at

leagle@rossharrisgroup.com. The company will return a completed form, which the hunter should keep with them while on the property.

Owned by RH Group.

This property is managed as several separate Regulated Areas for elk hunting and is located in Elk Hunting Units 6 and 7. Drawn elk hunters may apply to hunt these properties during the Elk Hunting Unit and Regulated Area drawing. Please refer to the elk hunting portion of our website.

Firearms are allowed for all game species other than deer which is archery only. No commercial guiding, camping, ATV use, horseback riding, fishing, night hunting, baiting, or livestock production is allowed. The use of screw-in-steps or tree stands that have screws and spikes which may injure trees are not permitted on the property.

Online Resources

Public Hunting Area users must abide by the Kentucky hunting, trapping, and fishing regulations. It is incumbent on persons using Public Hunting Areas to become familiar with these regulations. Kentucky Department of Fish & Wildlife Resources provides these regulations on our Web site at fw.ky.gov or by calling 1-800-858-1549.

Wildlife Management Area Map Notes & Legend

NOTE TO MAP USERS:

For most WMA maps the landscape is depicted using a combination of elevation contours, hillshading and a green tint indicating woodland areas that is derived from satellite imagery. On WMAs that are relatively small or have a history of surface mining aerial photography is used.

WMA Map Legend

	WMA Office		WMA Boundary		Populated Place
	Information Kiosk		Aerial photograph		Kentucky Boundary
	Check station		Other Public Hunting Areas		Interstate Highway
	Mobility-impaired Hunting Site		Area Off Limits		Kentucky Parkway
	Trailhead		No Hunting		U.S. Highway
	Horseback Trailhead		Seasonally Restricted Access		State Highway
	Parking Lot		Mobility Impaired Hunting Area		Local Road
	Picnic Area		Primitive Hunting Only		Forest Service Road
	Restrooms		Foot Traffic Only		Active Railroad
	Wildlife Viewing Site		Open Water		Abandoned Railroad
	Interpretive Site		Wetland		Federal Recreation Trail
	Retriever Training Site		Woodland		WMA Road
	Gate				WMA Foot Trail
	Campground				WMA Horse Trail
	Cemetery				Gas Pipeline
	Corps of Engineers Office				Powerline
	Waterfowl Blind				Rivers and Streams
	Shooting Range				Dam
	Established Bank Access				Trout Waters
	Fishing Pier				Elevation Contour
	Carrydown Launch				
	Small Boat Ramp				
	Large Boat Ramp				
	State Park Office				