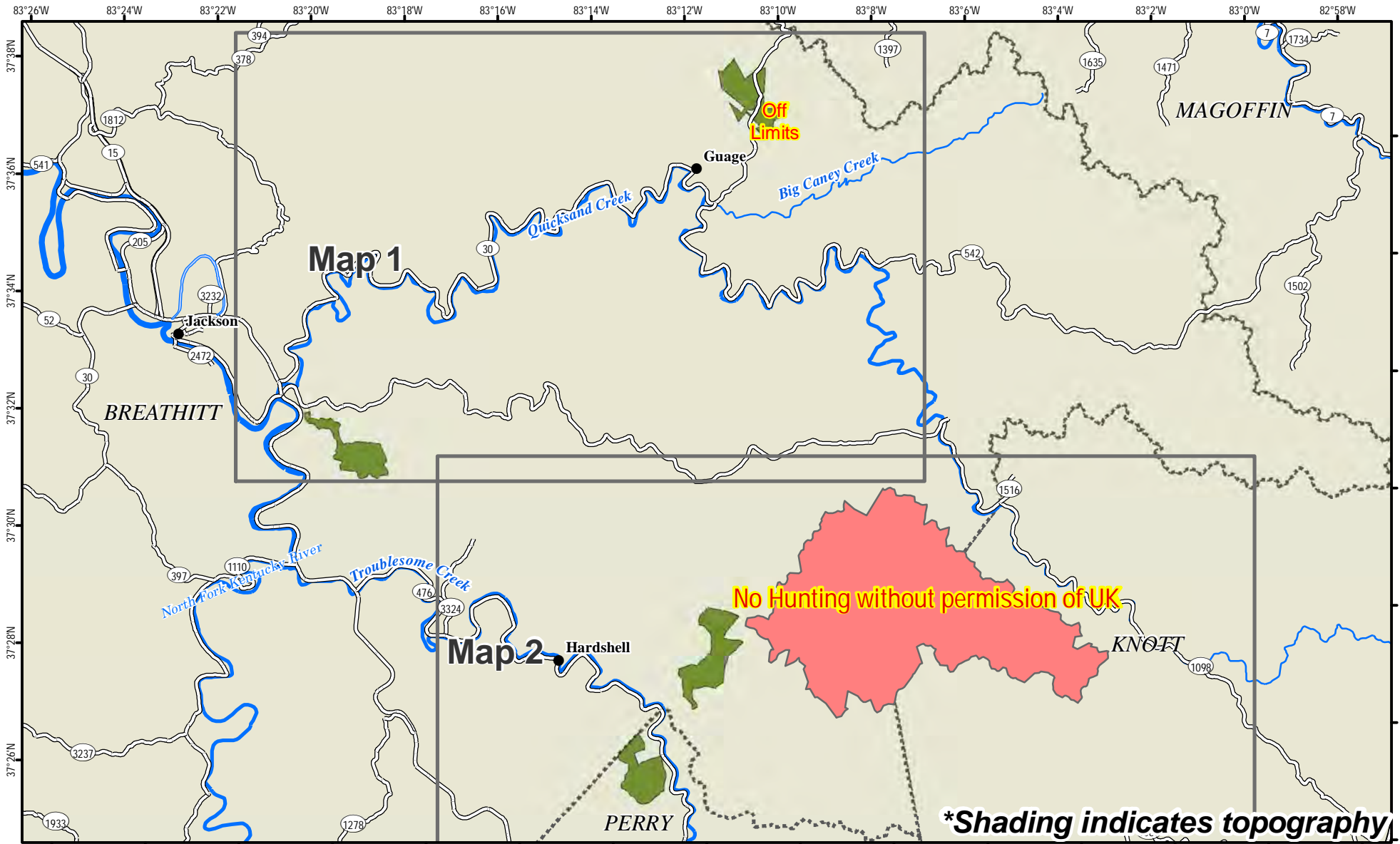
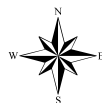


Robinson Forest Wildlife Management Area Index Map



***Shading indicates topography**

A map legend and additional information are provided on PDF pages that accompany this map.



0 0.5 1 1.5 2 2.5 3 Mile



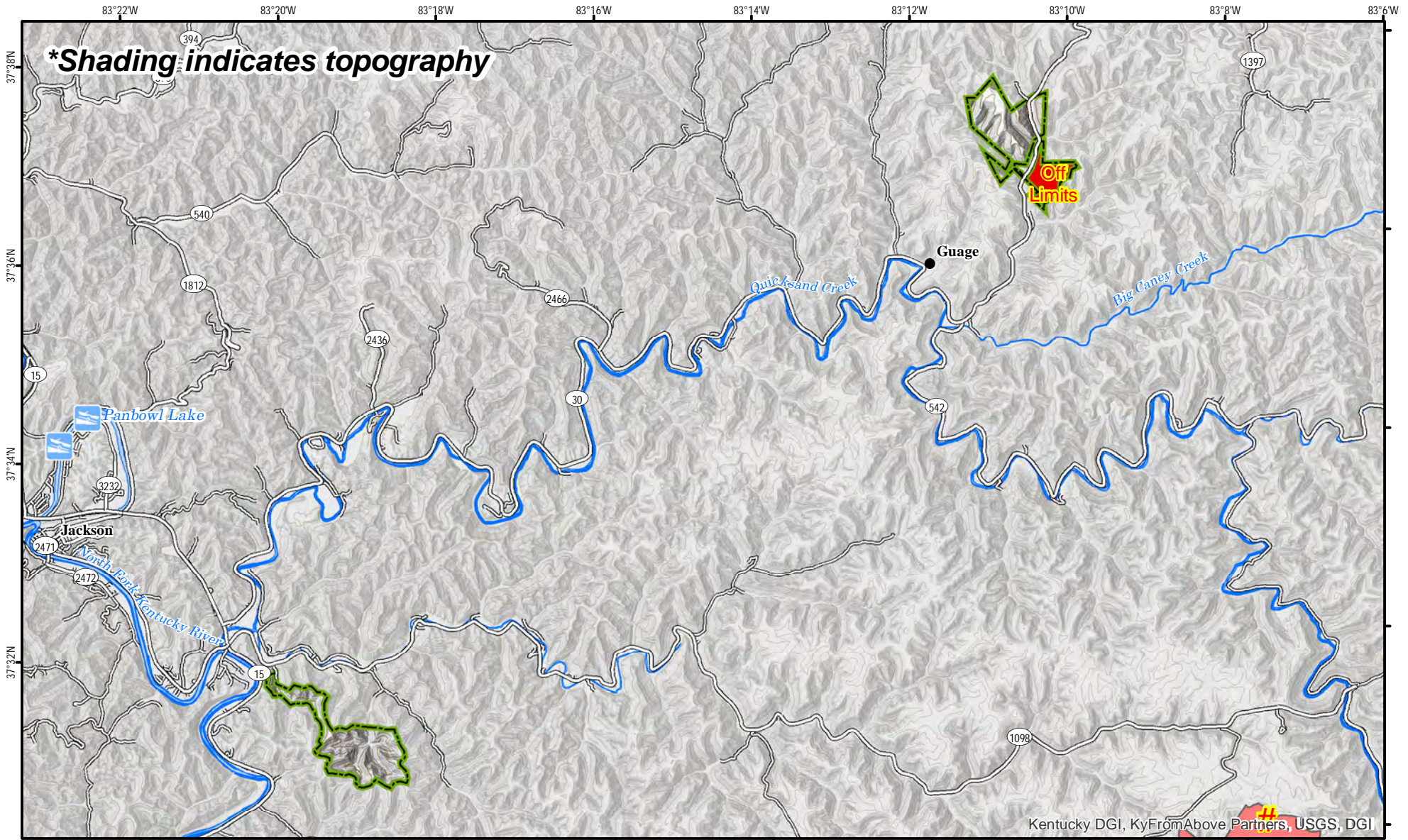
Scale 1:170,000

Publication Date: 2/14/2018



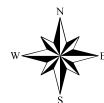
Note to Map Users

Map prepared by Kentucky Department of Fish & Wildlife Resources (KDFWR). Although KDFWR strives for accuracy, data used to create this map are from a variety of sources and dates; as such, KDFWR makes no representations regarding the accuracy or fitness for use of the information furnished herein.



A map legend and additional information are provided on PDF pages that accompany this map.

Publication Date: 4/6/2020
Land Classification from National Land Cover Database 2011



0 0.5 1 1.5 2 2.5 3 Mile

Scale 1:100,000

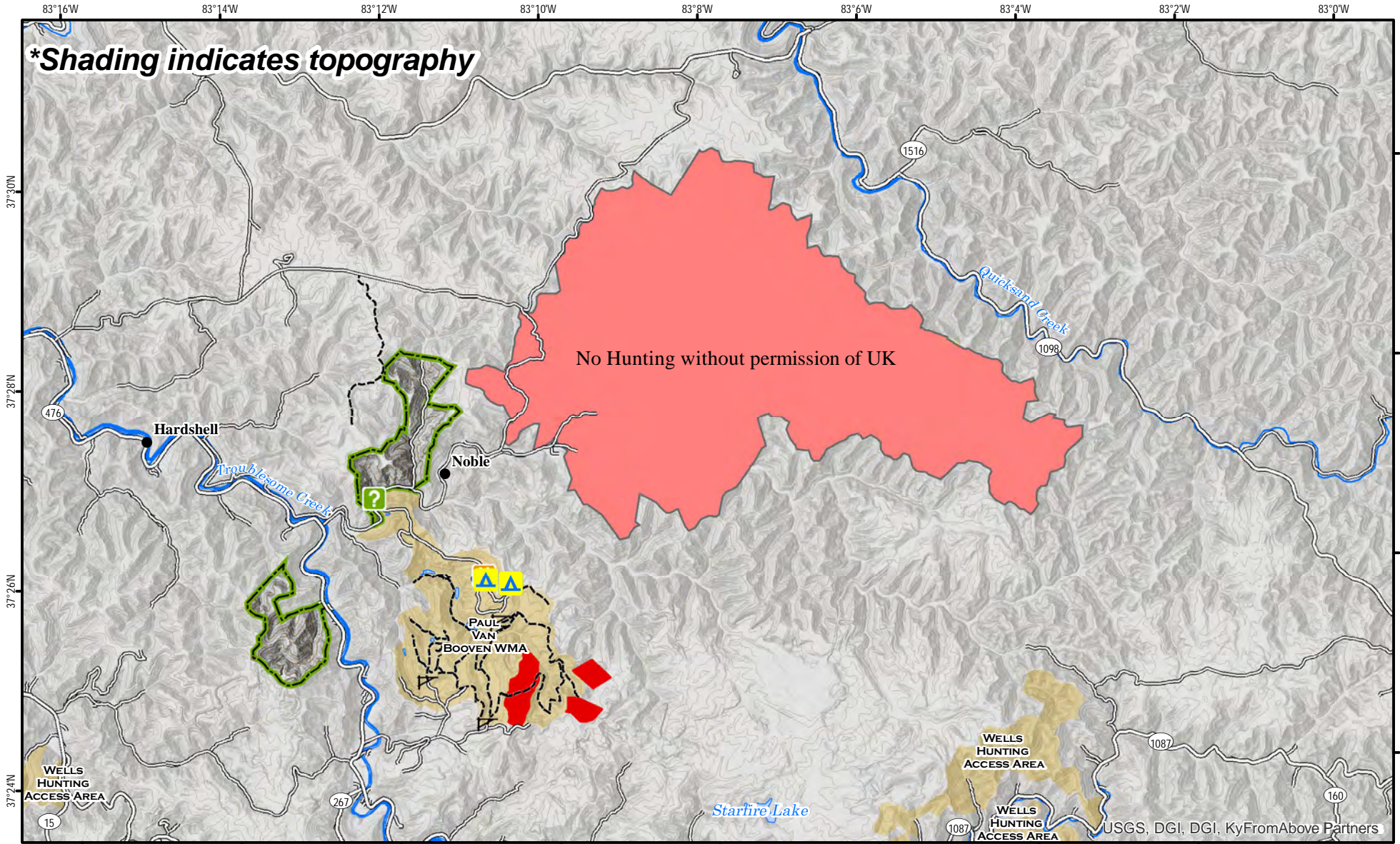
Contour interval: 200 feet



See adjoining
Map 2

Note to Map Users

Map prepared by Kentucky Department of Fish & Wildlife Resources (KDFWR). Although KDFWR strives for accuracy, data used to create this map are from a variety of sources and dates; as such, KDFWR makes no representations regarding the accuracy or fitness for use of the information furnished herein.



A map legend and additional information are provided on PDF pages that accompany this map.

Publication Date: 4/6/2020
Land Classification from National Land Cover Database 2011



0 0.5 1 1.5 2 2.5 3 Mile



Scale 1:100,000

Contour interval: 200 feet



Note to Map Users

Map prepared by Kentucky Department of Fish & Wildlife Resources (KDFWR). Although KDFWR strives for accuracy, data used to create this map are from a variety of sources and dates; as such, KDFWR makes no representations regarding the accuracy or fitness for use of the information furnished herein.

USGS, DGI, DGI, KyFromAbove Partners

Robinson Forest WMA Information

Public Hunting Area Location



Regional Locator



Directions & Description:

Robinson Forest is located east of Jackson and Clayhole. Head east of Clayhole on HWY 476 about 8 miles, and turn on Little Buckhorn RD and the county line.

See map for open areas in Breathitt and Perry county (Rose Branch, Little Caney Creek north, Bear branch, Fishtrap Branch, and Beaver Dam). See the Fall Hunting and Trapping Guide for additional information concerning hunting seasons.

Owned by University of Kentucky. This property is located within Elk Hunting Unit 4. Please refer to the elk hunting portion of our website.

Online Resources

Public Hunting Area users must abide by the Kentucky hunting, trapping, and fishing regulations. It is incumbent on persons using Public Hunting Areas to become familiar with these regulations. Kentucky Department of Fish & Wildlife Resources provides these regulations on our Web site at fw.ky.gov or by calling 1-800-858-1549.

WMA Overview

Location & Size: Breathitt, & Perry counties, 2,003 acres.

Contact: Becky Littleton 606-877-8409

Elevation: minimum 760 feet, maximum 1560 feet.

Entrance GPS coordinates: Latitude N 37.45023, Longitude W -83.19541



Area Habitat: mostly forest: open land 15%, forest 86%, wetland 0%, open water 0%.

Wildlife Management Area Map Notes & Legend

NOTE TO MAP USERS:

For most WMA maps the landscape is depicted using a combination of elevation contours, hillshading and a green tint indicating woodland areas that is derived from satellite imagery. On WMAs that are relatively small or have a history of surface mining aerial photography is used.

WMA Map Legend

	WMA Office		WMA Boundary		Populated Place
	Information Kiosk		Aerial photograph		Kentucky Boundary
	Check station		Other Public Hunting Areas		Interstate Highway
	Mobility-impaired Hunting Blind		Area Off Limits		Kentucky Parkway
	Trailhead		No Hunting		U.S. Highway
	Horseback Trailhead		Seasonally Restricted Access		State Highway
	Parking Lot		Mobility Impaired Hunting Area		Local Road
	Picnic Area		Primitive Hunting Only		Forest Service Road
	Restrooms		Foot Traffic Only		Active Railroad
	Wildlife Viewing Site		Open Water		Abandoned Railroad
	Interpretive Site		Wetland		Federal Recreation Trail
	Retriever Training Site		Woodland		WMA Road
	Gate				WMA Foot Trail
	Campground				WMA Horse Trail
	Cemetery				Gas Pipeline
	Corps of Engineers Office				Powerline
	Waterfowl Blind				Rivers and Streams
	Shooting Range				Dam
	Established Bank Access				Trout Waters
	Fishing Pier				Elevation Contour
	Carrydown Launch				
	Small Boat Ramp				
	Large Boat Ramp				
	State Park Office				