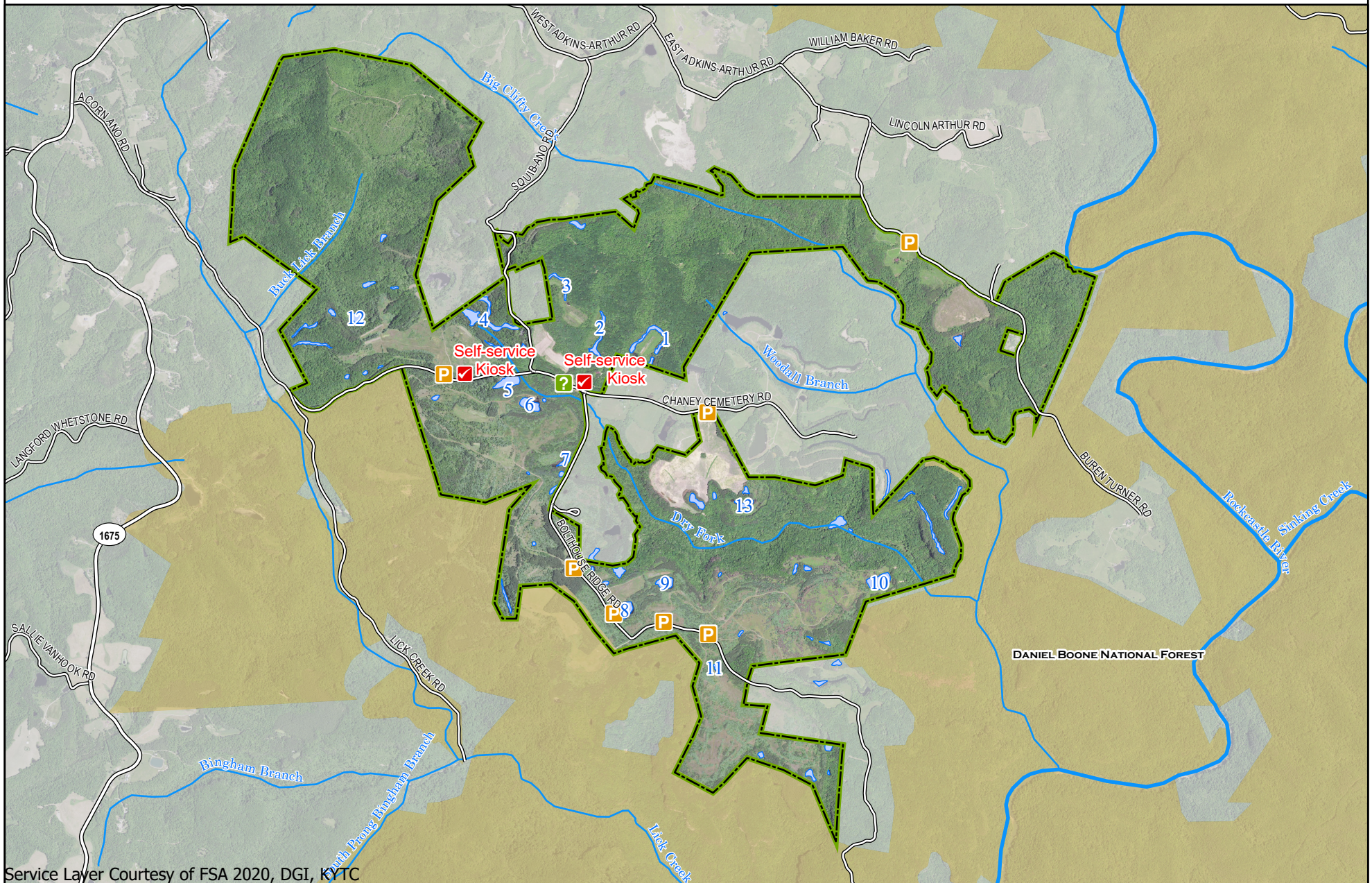


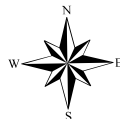
# Rockcastle River WMA



Service Layer Courtesy of FSA 2020, DGI, KYTC

A map legend and additional information are provided on PDF pages that accompany this map.

12/13/2022 3:35 PM



0 0.23 0.45 0.9 1.35 1.8 Miles

Map prepared by Kentucky Department of Fish & Wildlife Resources (KDFWR). Although KDFWR strives for accuracy, data used to create this map are from a variety of sources and dates; as such, KDFWR makes no representations regarding the accuracy or fitness for use of the information furnished herein.



Fishing quality is based on former landowner's property manager.

<b>Pond</b>	<b>Coordinates</b>	<b>Size Acres</b>	<b>Description</b>
1	37° 6'59", -84 19'56"	2.6	Long, narrow, and horseshoe-shaped with good access for canoes/kayaks on both ends. Outside bank is relatively steep-sided whereas inside bank is more gently sloping. Pine trees are fairly numerous along far bank. Bank fishing opportunities are relatively limited due to trees.
2	37° 6'58", -84° 20'9"	1.9	Long, narrow, and curvy. The far bank is relatively steep-sided but bank near gravel/dirt road is gently sloping. Maples and willows along pond margin and pines are along ridge overlooking pond. Bank fishing access is limited due to numerous trees but the pond contains a good access area for canoes/kayaks.
3	37° 7'10", -84° 20'17"	1.5	Fairly long and narrow. The end by the dam/overflow widens slightly. Bank fishing access is limited due to numerous trees but the pond contains a good access area near the dam for canoes/ kayaks. Adjacent field would be good for parking vehicles
4	37° 7'5", -84° 20'33"	5.9	Fairly long and narrow and in a forested area. Access appears difficult for canoes/ kayaks due to steep-sided banks. Parking is limited. Bank angler access is limited unless numerous trees are cut from pond margin. According to the property caretaker, this pond has a reputation for good fishing.
5	37° 6'53", -84° 20'31"	2.7	Oval-shaped pond is the most easily accessible pond on the property, as it is adjacent to Acorn Ano road. Parking space is limited. By reputation, this pond has good fishing. The overflow from this pond can block access to the Green Pond (Pond#6) during high flows. Bank fishing access is limited unless cattails are removed. Canoes/ kayaks can launch by the gate at east end of pond.
6	37° 6'47", -84° 20'26"	2.2	Large, oval pond that apparently remains green- colored year-round. A wooden pier provides some bank fishing access and the area adjacent to the pier would be good for launching canoes or kayaks. Cattails are numerous along one side of the pond.
7	37° 6'36", -84° 20'18"	1.0	Shallow with numerous standing trees. Swamp-like. Access is limited for both bank anglers and canoe/kayaks, due to the extensive shallow area.
8	37° 5'57", - 84° 20'4"	2.6	Large oval-shaped pond with clear water. Access is good for canoes/kayaks. By reputation, this pond has good bass/bluegill populations and both were observed. Bank fishing access is limited due to brush (autumn olive and some willows) along pond margin.
9	37° 6'4", -84° 19'46"	1.9	Triangular-shaped and surrounded by brush, possibly autumn olive and willows. The water is clear. Canoes/kayaks could be launched from dam but bank fishing access is limited due to thick trees/shrubs (mostly pines).
10	37° 6'4", -84° 18'43"	3.5	Large, clear pond completely surrounded by cattails. Some filamentous algae present. Potentially good bank access if cattails removed. Good access for canoes/kayaks along dam. Bass observed
11	37° 5'42", -84° 19'33"	0.5	Fairly small, oval-shaped clear water pond with a gently-sloping bank on one side. Good bank fishing access due to gentle slope and grassy bank. Supposedly, the only fish contained in this pond are minnows.
12	37° 7'5", -84° 21'17"	1.1	This pond appears to be surrounded by trees. Poor access.
13	37° 6'21", -84° 19'24"	1.0	Good bank access on near side of pond. Pond contains watershield, which could potentially impact bank fishermen.

# Rockcastle River WMA Information

## Public Hunting Area Location



## Directions & Description:

From Somerset, take KY 80 east. After traveling approximately 10 miles, turn right onto KY 1675 at the community of Stab. Go a little more than 5 miles and turn left onto Acorn-Ano Rd. to the area. Drive approximately 1 2/3 miles to the boundary.

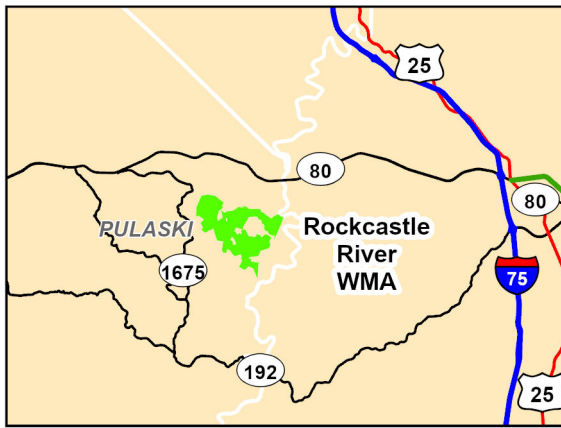
No ATV's, camping, horseback riding, or rock climbing is allowed on the WMA. Check the Kentucky Hunting and Trapping Guide for seasons and dates.

Upland bird and rabbit hunters MUST check in/out at Kiosks using HangTag (last page of map document).

## Online Resources

Public Hunting Area users must abide by the Kentucky hunting, trapping, and fishing regulations. It is incumbent on persons using Public Hunting Areas to become familiar with these regulations. Kentucky Department of Fish & Wildlife Resources provides these regulations on our Web site at [fw.ky.gov](http://fw.ky.gov) or by calling 1-800-858-1549.

## Regional Locator



## WMA Overview

**Location & Size:** Pulaski County; 2,924 acres.

**Contact:** (606) 677-1098

**Elevation:** minimum 780 feet, maximum 1360 feet.

**Entrance GPS coordinates:** Latitude N 37.11543,  
Longitude W -84.35098





**Area Habitat:** mostly forest: open land 36%, forest 63%, wetland 0%, open water 1%.

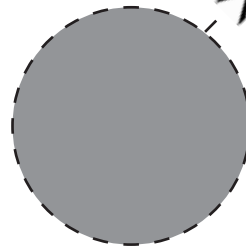
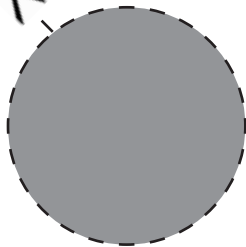
# Wildlife Management Area Map Notes & Legend

## NOTE TO MAP USERS:

For most WMA maps the landscape is depicted using a combination of elevation contours, hillshading and a green tint indicating woodland areas that is derived from satellite imagery. On WMAs that are relatively small or have a history of surface mining aerial photography is used.

## WMA Map Legend

	WMA Office		WMA Boundary		Populated Place
	Information Kiosk		Aerial photograph		Kentucky Boundary
	Check station		Other Public Hunting Areas		Interstate Highway
	Mobility-impaired Hunting Blind		Area Off Limits		Kentucky Parkway
	Trailhead		No Hunting		U.S. Highway
	Horseback Trailhead		Seasonally Restricted Access		State Highway
	Parking Lot		Mobility Impaired Hunting Area		Local Road
	Picnic Area		Primitive Hunting Only		Forest Service Road
	Restrooms		Foot Traffic Only		Active Railroad
	Wildlife Viewing Site		Open Water		Abandoned Railroad
	Interpretive Site		Wetland		Federal Recreation Trail
	Retriever Training Site		Woodland		WMA Road
	Gate				WMA Foot Trail
	Campground				WMA Horse Trail
	Cemetery				Gas Pipeline
	Corps of Engineers Office				Powerline
	Waterfowl Blind				Rivers and Streams
	Shooting Range				Dam
	Established Bank Access				Trout Waters
	Fishing Pier				Elevation Contour
	Carrydown Launch				
	Small Boat Ramp				
	Large Boat Ramp				
	State Park Office				



Detach and submit bottom portion after hunting.  
Fold in half and staple or tape closed before mailing.

## Deposit ONE hang tag per PARTY

### CHECK IN

*Hang in vehicle.*

#### Circle what you are hunting:

Rabbit Quail Grouse Woodcock Running dogs (*not hunting*)

Party Leader Name:

Leader Phone or Email (*optional*)

Date:

Zip Code:

# in Party:

Your Name:

WMA:

Tract:

Have you hunted here before?

Yes

No

### CHECK OUT

*Deposit tag at kiosk, WMA office or mail.*

Start Time:

End Time:

# Dogs:

#### TOTAL # FLUSHED by party

Rabbits

Quail Coveys

Woodcock

Grouse

#### TOTAL # KILLED by party

Rabbits

Quail

Woodcock

Grouse

Rate the hunting experience  
(*circle one*)

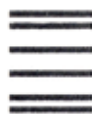
Great OK Poor

Rate the habitat you hunted in  
(*circle one*)

Great OK Poor

#### Why?

- Premiere wildlife management – habitat and harvest
- Questions or concerns: [Cody.Rhoden@ky.gov](mailto:Cody.Rhoden@ky.gov), (502) 892-4521



**BUSINESS REPLY MAIL**  
FIRST-CLASS MAIL PERMIT NO. 1 FRANKFORT, KY

POSTAGE WILL BE PAID BY ADDRESSEE

DEPARTMENT OF FISH AND WILDLIFE  
1 SPORTSMANS LN  
FRANKFORT, KY 40601-9986

