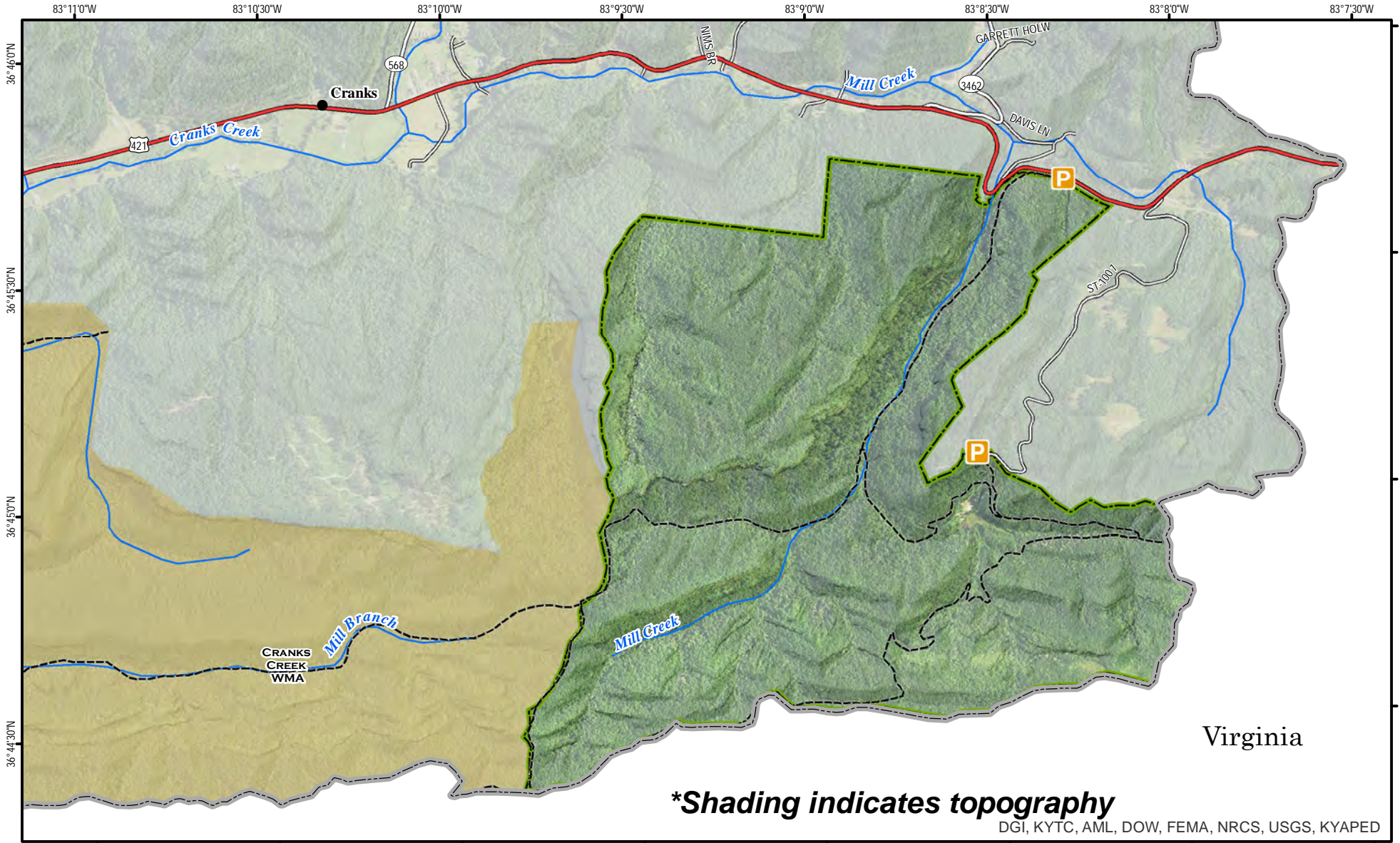




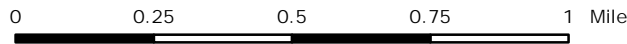
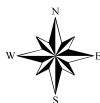
Stone Mountain Wildlife Management Area and State Natural Area



Virginia

A map legend and additional information are provided on PDF pages that accompany this map.

Publication Date: 5/2/2019
Imagery from Farm Service Agency 2016



Scale 1:22,000



Note to Map Users

Map prepared by Kentucky Department of Fish & Wildlife Resources (KDFWR). Although KDFWR strives for accuracy, data used to create this map are from a variety of sources and dates; as such, KDFWR makes no representations regarding the accuracy or fitness for use of the information furnished herein.

Stone Mountain WMA and State Natural Area Information

Public Hunting Area Location

Stone Mountain WMA and State Natural Area



Regional Locator



Directions & Description:

From Harlan travel approximately 13 miles southeast on HWY 421 to the property on the right. There are 2 access points. The first access is directly off HWY 421, approximately halfway up the mountain there is a sharp curve, just past this curve is a parking area on the right. Access to the parking area should be made when coming down the hill or exiting the parking area should only be made up the hill due to a blind spot on HWY 421 and the angle of the drive. The second access is a dirt road at the top of the hill that turns to the right. Follow this road 1.2 miles to the property; a minimum of a 2-wheel drive truck is recommended for ground clearance.

Steep, mountainous terrain, is entirely forested with the exception of a dry man-made lakebed. Good to moderate populations of squirrel, rabbits, deer, turkey and songbirds exist on the area.

The area is open under statewide regulations for small game, turkey, and deer seasons. Purchased with Kentucky Heritage Land Conservation funds and is jointly owned and managed by the Kentucky Department of Fish & Wildlife Resources and the Kentucky State Nature Preserves Commission.

Online Resources

Public Hunting Area users must abide by the Kentucky hunting, trapping, and fishing regulations. It is incumbent on persons using Public Hunting Areas to become familiar with these regulations. Kentucky Department of Fish & Wildlife Resources provides these regulations on our Web site at fw.ky.gov or by calling 1-800-858-1549.

WMA Overview

Location & Size: Harlan County, 1,017 acres.

Contact: (606) 337-9317

Elevation: minimum 1683 feet, maximum 2933 feet.

Entrance GPS coordinates: Latitude N 36.76137,
Longitude W -83.13831


Area Habitat: mostly forest: open land 6%, forest 94%, wetland 0%, open water 0%.

Wildlife Management Area Map Notes & Legend

NOTE TO MAP USERS:

For most WMA maps the landscape is depicted using a combination of elevation contours, hillshading and a green tint indicating woodland areas that is derived from satellite imagery. On WMAs that are relatively small or have a history of surface mining aerial photography is used.

WMA Map Legend

	WMA Office		WMA Boundary		Populated Place
	Information Kiosk		Aerial photograph		Kentucky Boundary
	Check station		Other Public Hunting Areas		Interstate Highway
	Mobility-impaired Hunting Blind		Area Off Limits		Kentucky Parkway
	Trailhead		No Hunting		U.S. Highway
	Horseback Trailhead		Seasonally Restricted Access		State Highway
	Parking Lot		Mobility Impaired Hunting Area		Local Road
	Picnic Area		Primitive Hunting Only		Forest Service Road
	Restrooms		Foot Traffic Only		Active Railroad
	Wildlife Viewing Site		Open Water		Abandoned Railroad
	Interpretive Site		Wetland		Federal Recreation Trail
	Retriever Training Site		Woodland		WMA Road
	Gate				WMA Foot Trail
	Campground				WMA Horse Trail
	Cemetery				Gas Pipeline
	Corps of Engineers Office				Powerline
	Waterfowl Blind				Rivers and Streams
	Shooting Range				Dam
	Established Bank Access				Trout Waters
	Fishing Pier				Elevation Contour
	Carrydown Launch				
	Small Boat Ramp				
	Large Boat Ramp				
	State Park Office				