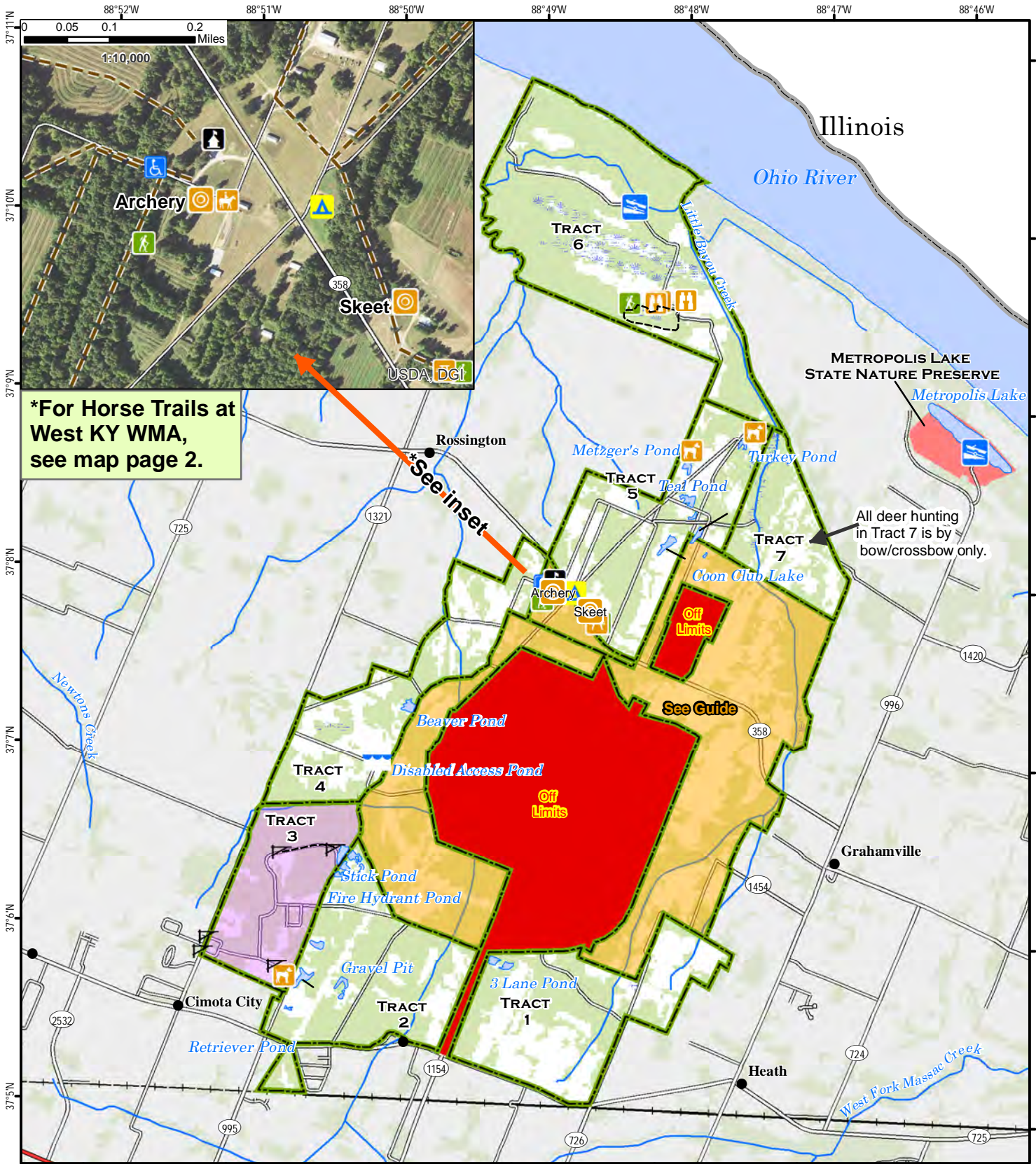




# West Kentucky Wildlife Management Area



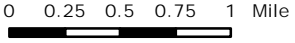
**\*For Horse Trails at West KY WMA, see map page 2.**

**METROPOLIS LAKE STATE NATURE PRESERVE**  
Metropolis Lake

All deer hunting in Tract 7 is by bow/crossbow only.

A map legend and additional information are provided on PDF pages that accompany this map.

Publication Date: 11/13/2020  
Land Classification from National Land Cover Database 2011  
Imagery from Farm Service Agency 2018



Scale 1:55,000

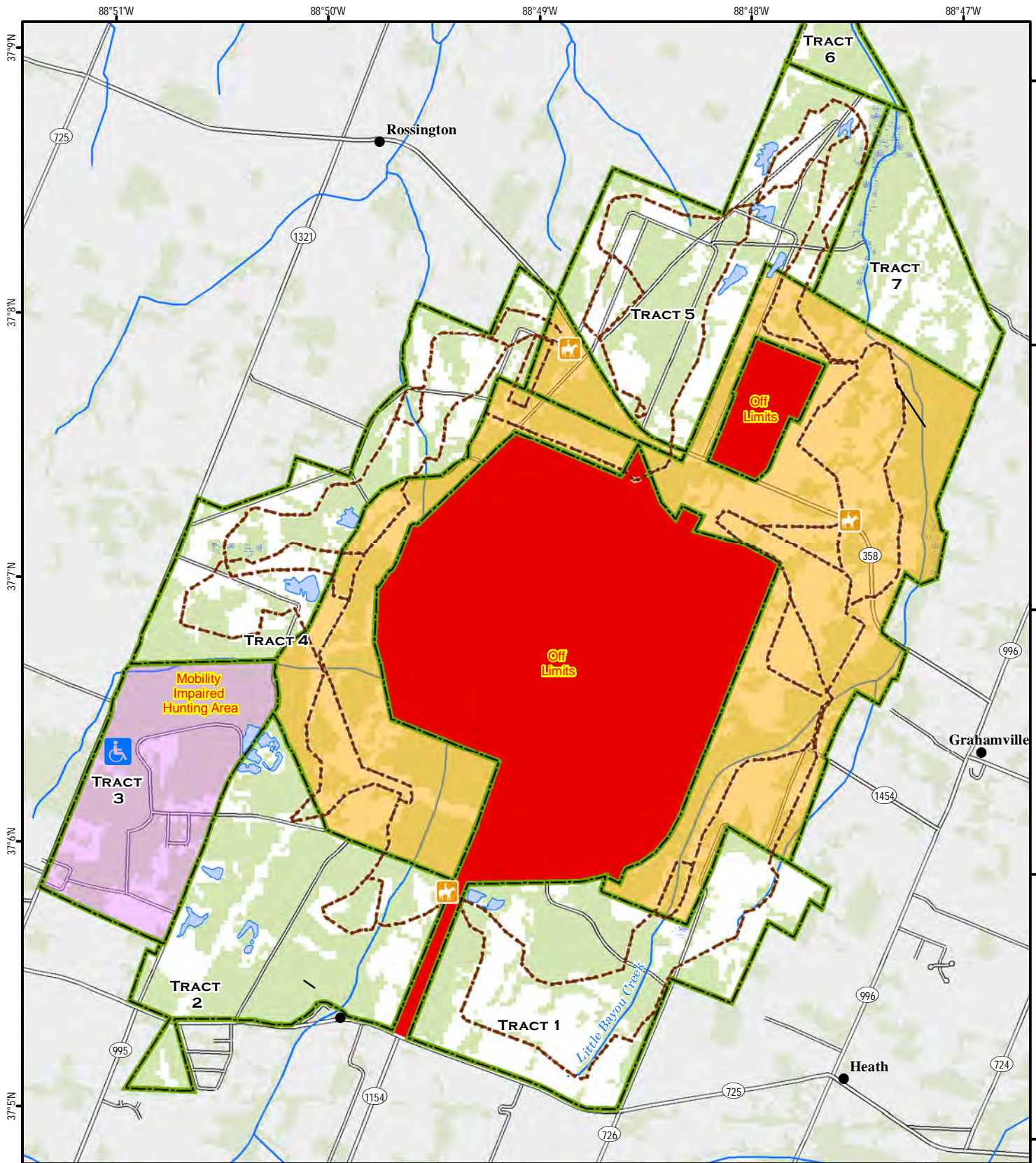


**Note to Map Users**

Map prepared by Kentucky Department of Fish & Wildlife Resources (KDFWR). Although KDFWR strives for accuracy, data used to create this map are from a variety of sources and dates; as such, KDFWR makes no representations regarding the accuracy or fitness for use of the information furnished herein.

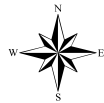


# West Kentucky Wildlife Management Area Horse Trails



A map legend and additional information are provided on PDF pages that accompany this map.

Publication Date: 11/19/2016  
 Land Classification from National Land Cover Database 2011



Scale 1:37,000



### Note to Map Users

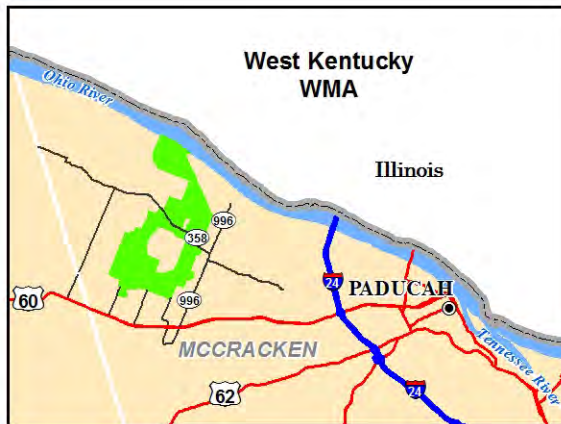
Map prepared by Kentucky Department of Fish & Wildlife Resources (KDFWR). Although KDFWR strives for accuracy, data used to create this map are from a variety of sources and dates; as such, KDFWR makes no representations regarding the accuracy or fitness for use of the information furnished herein.

# West Kentucky WMA Information

## Public Hunting Area Location



## Regional Locator



## WMA Overview

**Location & Size:** McCracken County, 6,425 acres.

**Contact:** (270) 488-3233

**Elevation:** minimum 297 feet, maximum 451 feet.

**Entrance GPS coordinates:** Latitude N 37.13324, Longitude W -88.81393

**Area Habitat:** mostly forest: open land 34%, forest 47%, wetland 18%, open water 1%.

## Directions & Description:

Seven miles from I-24, exit 4, in Paducah, on US 60 in Future City. Turn north on KY 996 for 3.6 miles. Turn west on KY 358 for 2.6 miles to office.

Old fields, woodlots, grasslands, crop fields and food plots. Twelve fishing ponds with access for small boats; picnicking, hiking; kennels and stalls for use during field trials. Horseback riding on designated trails only. National caliber horseback bird dog field trials, retriever field trials, and retriever test hunts are hosted September - May on the WMA. Chief Paduke Skeet Range (Phone (270) 488-3248, web site [www.chiefpaduke.com](http://www.chiefpaduke.com)) on KY 358 one-half mile east of office. Archery range (mobility-impaired accessible) with 10-50 yard targets open daily during daylight hours, wildlife viewing areas (Tupelo Swamp), the fishing pier at "Disabled Access Pond" is handicap assessable. Primitive camping is allowed on the WMA, but ONLY at the designated camping site.

For hunting there is mobility impaired access in designated areas to permit holders (Tract 3). Hunttable populations of deer, turkey, dove, squirrel, rabbits and quail exist on the area. Special regulations apply for deer, turkey and small game hunting. All vehicular traffic is prohibited on Tract 6 Feb. 1 - April 16.

Trails were put in with the assistance of a National Recreational Trails Fund grant and the Russ Chittenden Woodlands Fund provided funds for materials, signs, tree seedlings, and a large amount of volunteer labor.

Owned/leased by Kentucky Department of Fish and Wildlife Resources.

## Online Resources





Public Hunting Area users must abide by the Kentucky hunting, trapping, and fishing regulations. It is incumbent on persons using Public Hunting Areas to become familiar with these regulations. Kentucky Department of Fish & Wildlife Resources provides these regulations on our Web site at [fw.ky.gov](http://fw.ky.gov) or by calling 1-800-858-1549.

# Wildlife Management Area Map Notes & Legend

## NOTE TO MAP USERS:

For most WMA maps the landscape is depicted using a combination of elevation contours, hillshading and a green tint indicating woodland areas that is derived from satellite imagery. On WMAs that are relatively small or have a history of surface mining aerial photography is used.

## WMA Map Legend

	WMA Office		WMA Boundary		Populated Place
	Information Kiosk		Aerial photograph		Kentucky Boundary
	Check station		Other Public Hunting Areas		Interstate Highway
	Mobility-impaired Hunting Blind		Area Off Limits		Kentucky Parkway
	Trailhead		No Hunting		U.S. Highway
	Horseback Trailhead		Seasonally Restricted Access		State Highway
	Parking Lot		Mobility Impaired Hunting Area		Local Road
	Picnic Area		Primitive Hunting Only		Forest Service Road
	Restrooms		Foot Traffic Only		Active Railroad
	Wildlife Viewing Site		Open Water		Abandoned Railroad
	Interpretive Site		Wetland		Federal Recreation Trail
	Retriever Training Site		Woodland		WMA Road
	Gate				WMA Foot Trail
	Campground				WMA Horse Trail
	Cemetery				Gas Pipeline
	Corps of Engineers Office				Powerline
	Waterfowl Blind				Rivers and Streams
	Shooting Range				Dam
	Established Bank Access				Trout Waters
	Fishing Pier				Elevation Contour
	Carrydown Launch				
	Small Boat Ramp				
	Large Boat Ramp				
	State Park Office				