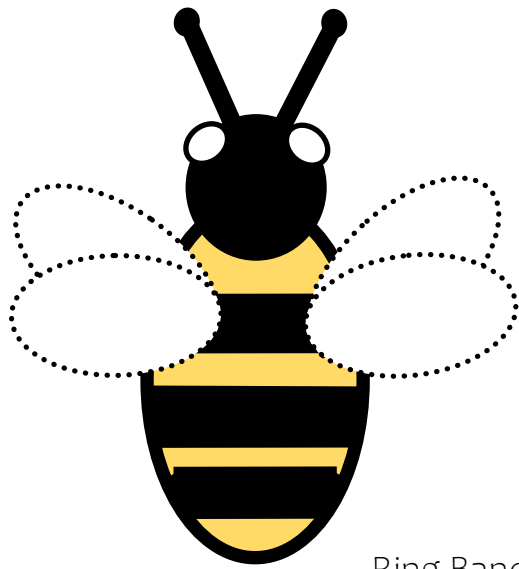


# Bees Are For More Than Just Honey



Ring Band →

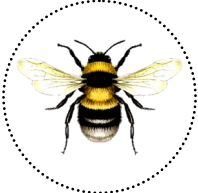
## Instructions

1. Cut out the bumble bee finger puppet and ring band.
2. Bend the ends of the band together and tape the overlapping ends to make a ring.
3. Glue the ring to the bottom of the bumble bee near the wings.
4. Cut out the fact card below and wow your friends with your knowledge about four of Kentucky's most common bee species!



### Honey Bees (*Apis mellifera*)

- Live in social colonies
- Create hives in man-made structures or hollow trees
- 1.2 –5.4 billion dollar agriculture industry



### Bumble Bees (*Bombus spp.*)

- Live in social colonies
- Create nests underground
- Play a critical role in pollinating tomatoes, blueberries and squash



### Carpenter Bees (*Xylocopa spp.*)

- Solitary living
- Unlike bumble bees, carpenter bees have smooth, non-hairy abdomens
- Dig holes in wood to lay their eggs



### Halictid Bees (Family Halictidae)

- Solitary living but will sometimes live in colonies
- Are metallic in color
- Nicknamed “sweat-bees”



Salato Wildlife Education Center  
1 Sportsman's Lane Frankfort Kentucky 40601  
FW.KY.GOV  
Salato@ky.gov

