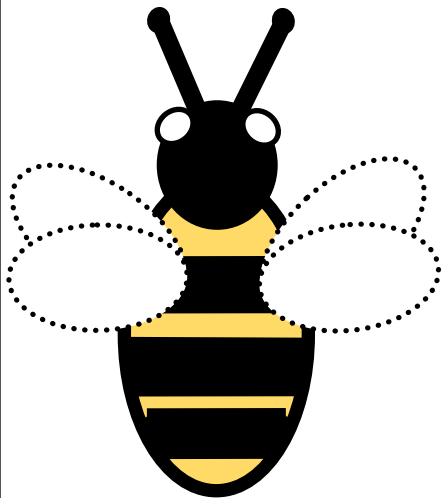


Pollination Extravaganza: Pollen Puppet Transfer

Instructions

1. Choose a pollinator puppet below and cut it out.
2. Wrap a pipe cleaner around your finger to create a ring and tape it to the underside of your pollinator puppet.
3. Put some flour into a bowl.
4. Place your pollinator, ring side down, into the bowl of flour.
5. Next you will move your pipe cleaner pollinator over top of your giant paper flower.
6. Shake or tap your pollinator over top of your flower.
7. Congratulations! You have successfully pollinated your paper flowers.



Materials Needed

1. Scissors
2. Tape
3. Pipe Cleaner
4. Flour
5. Bowl

Pollination is a key component for the life cycle of many flowering plant species. In the video you learned that pollination can occur one of three ways: self pollination, wind/water pollination and pollination from the help of a pollinator. During National Pollinator Week, we celebrate the critical role that pollinators play not only on a global scale but a local scale. There are many things that you can do to help pollinators which does not have to be just during pollinator week.

Buzz Worthy Facts

- There are approximately 200,000 pollinator species worldwide
- KY has approximately 20,000 pollinator species
- 1 out of every 3 bites of food occurs because of a pollinator
- Pollinators help support a healthy ecosystem
- Globally pollinators have declined due to habitat loss, chemicals and other factors
- Birds, bats, butterflies, moths, flies, beetles, wasps, small mammals, and bees



Salato Wildlife Education Center
1 Sportsman's Lane Frankfort Kentucky 40601
FW.KY.GOV
Salato@ky.gov

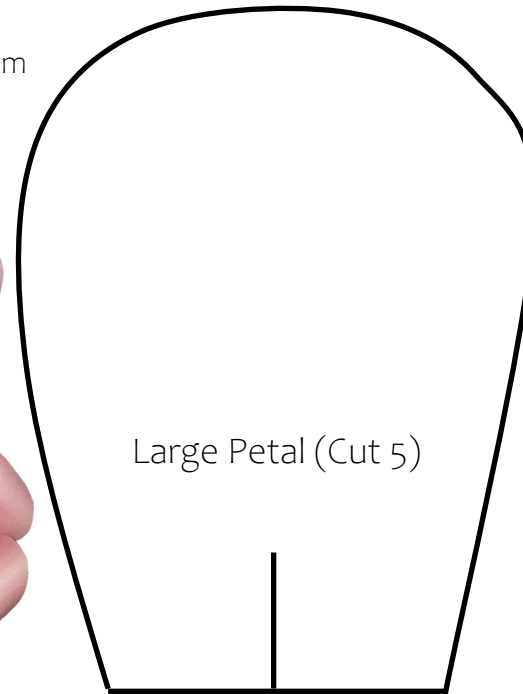
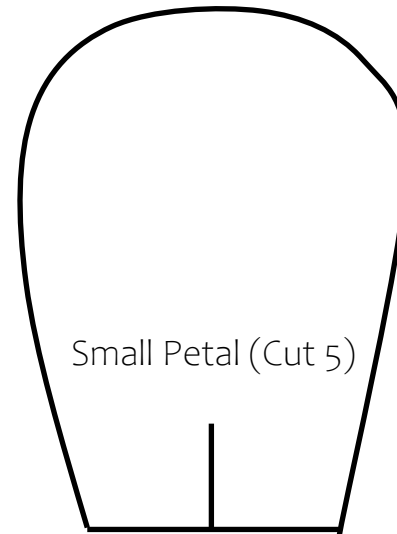
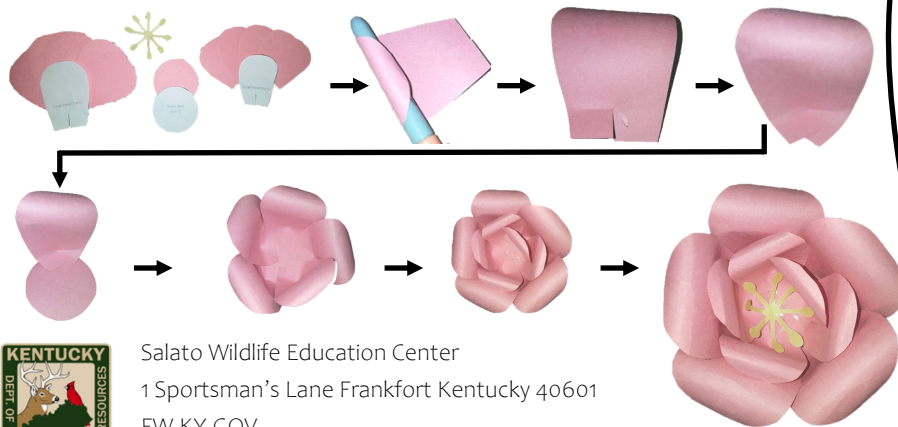
Pollination Extravaganza: Giant Flower Template

Materials Needed

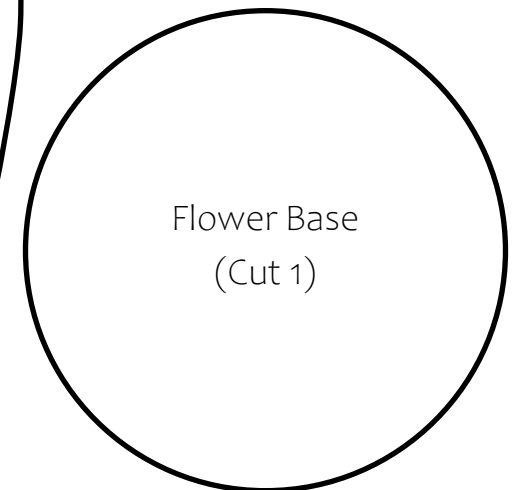
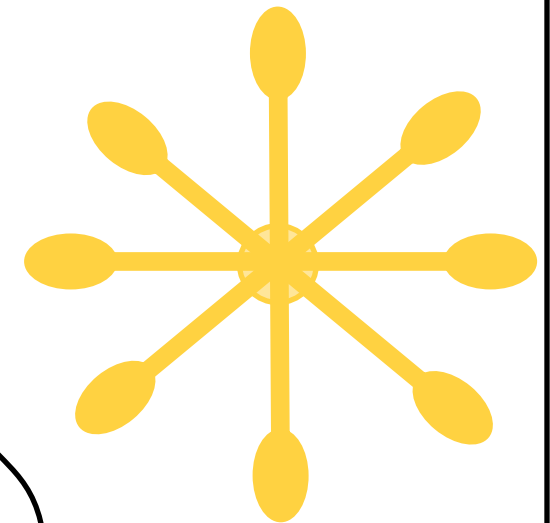
1. Scissors
2. Glue Stick
3. Construction Paper

Instructions

1. Using the templates, cut out 5 large petals, 5 small petals, 1 flower base, and 1 flower anthers from a piece of colored construction paper.
2. Roll the rounded edge of the petal backwards around a marker.
3. Add a line of glue on the inside edge of the petal slit. Pull the inside corners of the petal together so they overlap.
4. Add some glue to the outside edge of the flower base and adhere the petal to it. Overlap the petals slightly as you finish adhering the large petals to the base.
5. Continue the process with the small petals, slightly stagger them from the large petals.
6. Glue the anthers into the center of the flower, bending the arms up towards the center.



Flower Anthers
(Cut 1) ↓



Salato Wildlife Education Center
1 Sportsman's Lane Frankfort Kentucky 40601
FW.KY.GOV
Salato@ky.gov