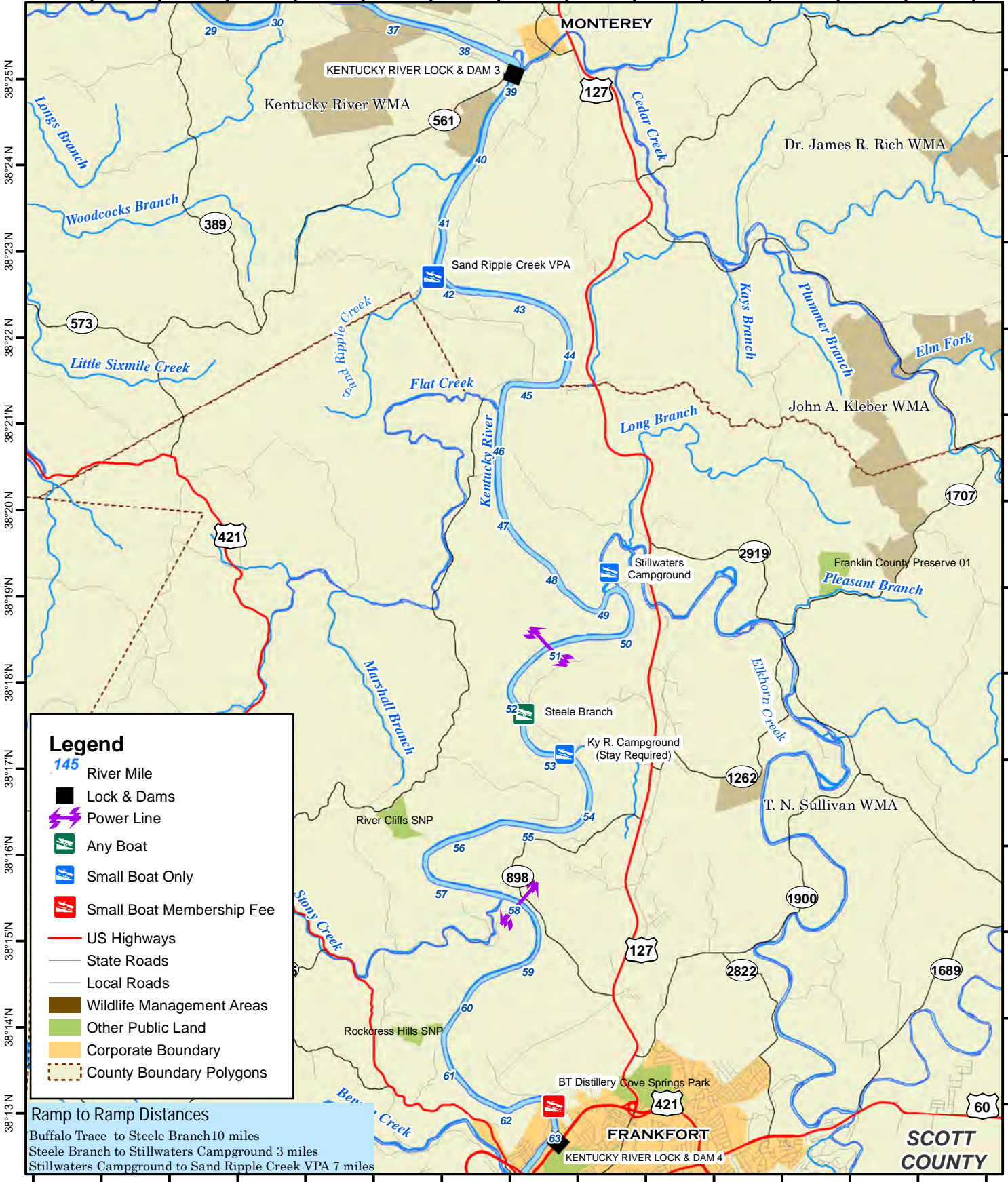




Blue Water Trail: Kentucky River Pool 3



84°59'W 84°58'W 84°57'W 84°56'W 84°55'W 84°54'W 84°53'W 84°52'W 84°51'W 84°50'W 84°49'W 84°48'W 84°47'W 84°46'W

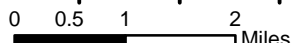


Legend

- 145 River Mile
- Lock & Dams
- Power Line
- Any Boat
- Small Boat Only
- Small Boat Membership Fee
- US Highways
- State Roads
- Local Roads
- Wildlife Management Areas
- Other Public Land
- Corporate Boundary
- County Boundary Polygons

Ramp to Ramp Distances

Buffalo Trace to Steele Branch 10 miles
 Steele Branch to Stillwaters Campground 3 miles
 Stillwaters Campground to Sand Ripple Creek VPA 7 miles



Scale: 1:110,000



Map prepared by Kentucky
 Department of Fish & Wildlife
 Resources Publication
 Date: October 9, 2013

NOTICE TO BOATERS:
 Public access to KY River Pool 3 is at the following ramps: Steele Branch, Stillwaters, Kentucky River Campgrounds, and Sand Ripple Creek VPA

