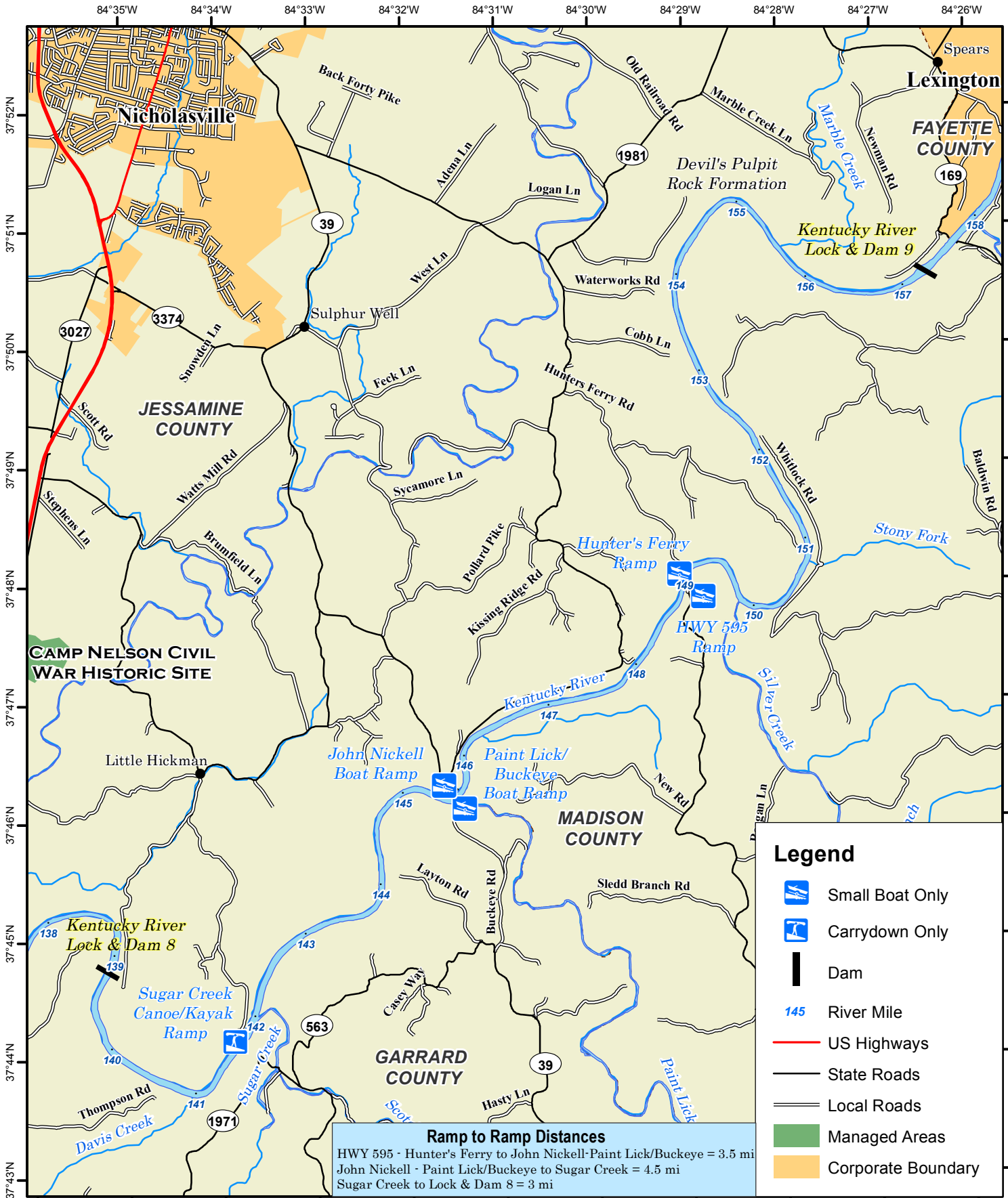


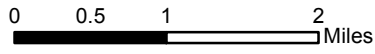
Blue Water Trail: Kentucky River Pool 8



Ramp to Ramp Distances
 HWY 595 - Hunter's Ferry to John Nickell-Paint Lick/Buckeye = 3.5 mi
 John Nickell - Paint Lick/Buckeye to Sugar Creek = 4.5 mi
 Sugar Creek to Lock & Dam 8 = 3 mi

- Legend**
- Small Boat Only
 - Carrydown Only
 - Dam
 - River Mile
 - US Highways
 - State Roads
 - Local Roads
 - Managed Areas
 - Corporate Boundary

Map prepared by Kentucky
 Department of Fish & Wildlife
 Resources Publication
 Date: October 27, 2011



Scale: 1:80,000

NOTICE TO BOATERS:
 Public access to KY River Pool 8 is at the following locations: HWY 595 & Hunter's Ferry Ramp, John Nickell & Paint Lick/Buckeye Ramps, & Sugar Creek Canoe/Kayak Ramp.