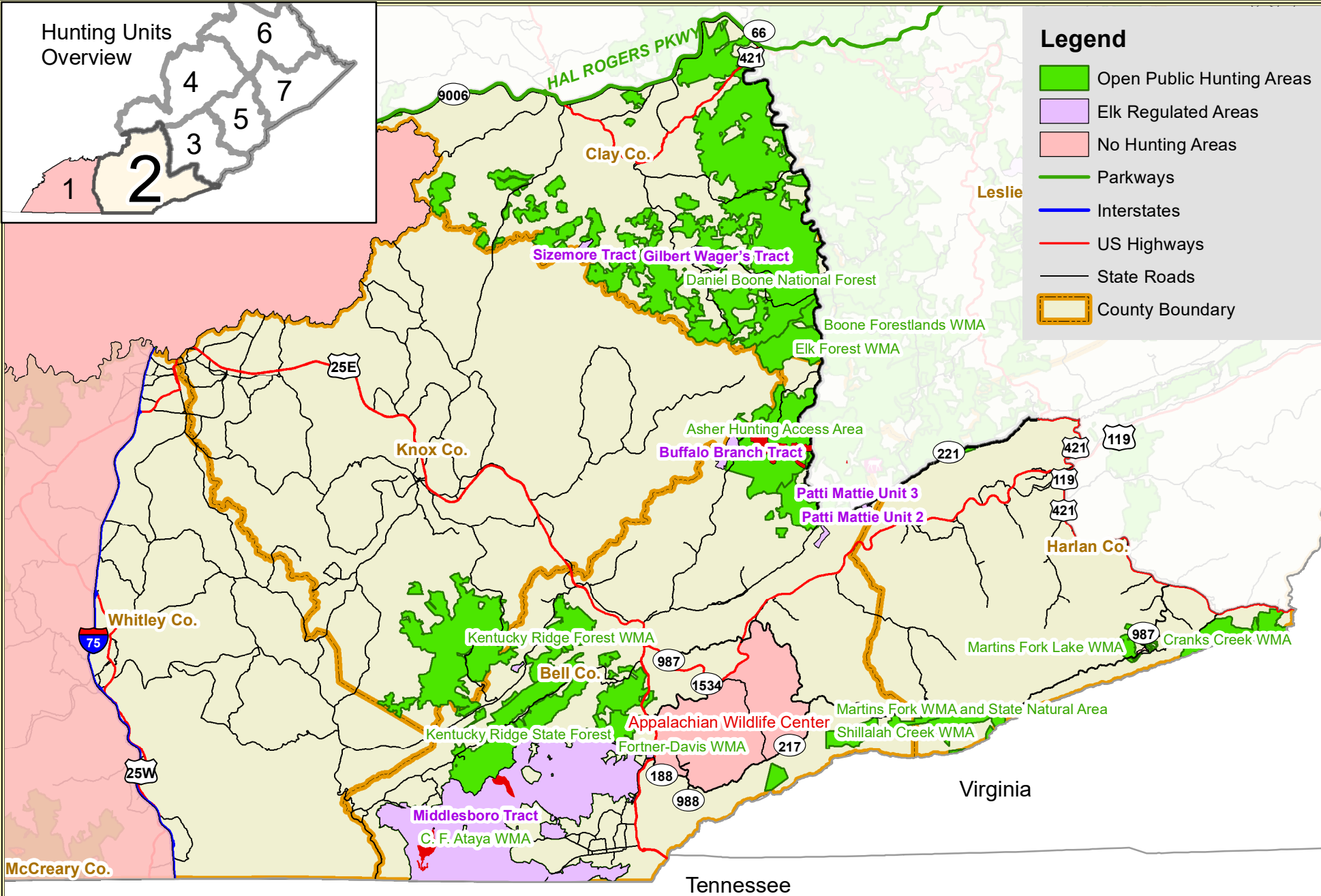
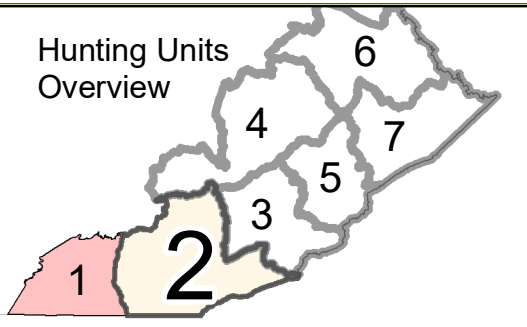


Elk Hunting Unit 2

The following page describes the boundary roads.



Hunting Units Overview



Legend

- Open Public Hunting Areas
- Elk Regulated Areas
- No Hunting Areas
- Parkways
- Interstates
- US Highways
- State Roads
- County Boundary



ELK HUNTING UNIT 2 BOUNDARY DESCRIPTION

Including portions of Whitley, Bell, Knox, Clay, Leslie, and Harlan counties, the western boundary of unit 2 follows interstate 75 from the Kentucky-Tennessee border north to the Laurel county line; easterly along the Laurel county line to its junction with the Hal Rodgers Parkway/Highway 80; east along the Hal Rodgers Parkway to its junction with highway 66; south along highway 66 to the intersection of highway 421 less than a mile then south along highway 66 to the intersection of 2011; south along highway 2011 to its intersection with highway 221; east along highway 221 to its intersection with highway 421; south along highway 421 to the Kentucky-Virginia border; west southwest along the Kentucky-Tennessee border to interstate 75 to complete the unit 2 boundary.

To view a more detailed maps of a specific Public Hunting Area or Regulated Area please visit the following links: [Public Hunting Areas](#) and [Regulated Areas](#)

Appalachian Wildlife Center (AWC) Off Limits Area. The AWC Off Limits Area starts at the intersection of Highway 119 and 987 near the community of Varilla. From there, the boundary runs north along 987 towards the community of Miracle, then turns south to southeast and continues along 987 until it intersects with 217 (~8.5 miles). Turn right onto 217 and travel southwest for 8 miles until 217 and 988 merge past Dalton Rd. Travel north on 988 for 0.5 miles until 988 intersects with 188. Turn left on 188 and travel west northwest until 188 intersects with US Highway 25 E. Turn right onto 25 E and travel north for 1.9 miles and turn right onto 1534. Continue northeast on 1534 for 6 miles until it intersects with highway 1344 near the community of Calvin. Turn left to follow 1344 for highway 119, and follow 119 east for 2.75 miles until the intersection of 119 and 987 near Varilla.

➔ A map of the center is provided on the next page.