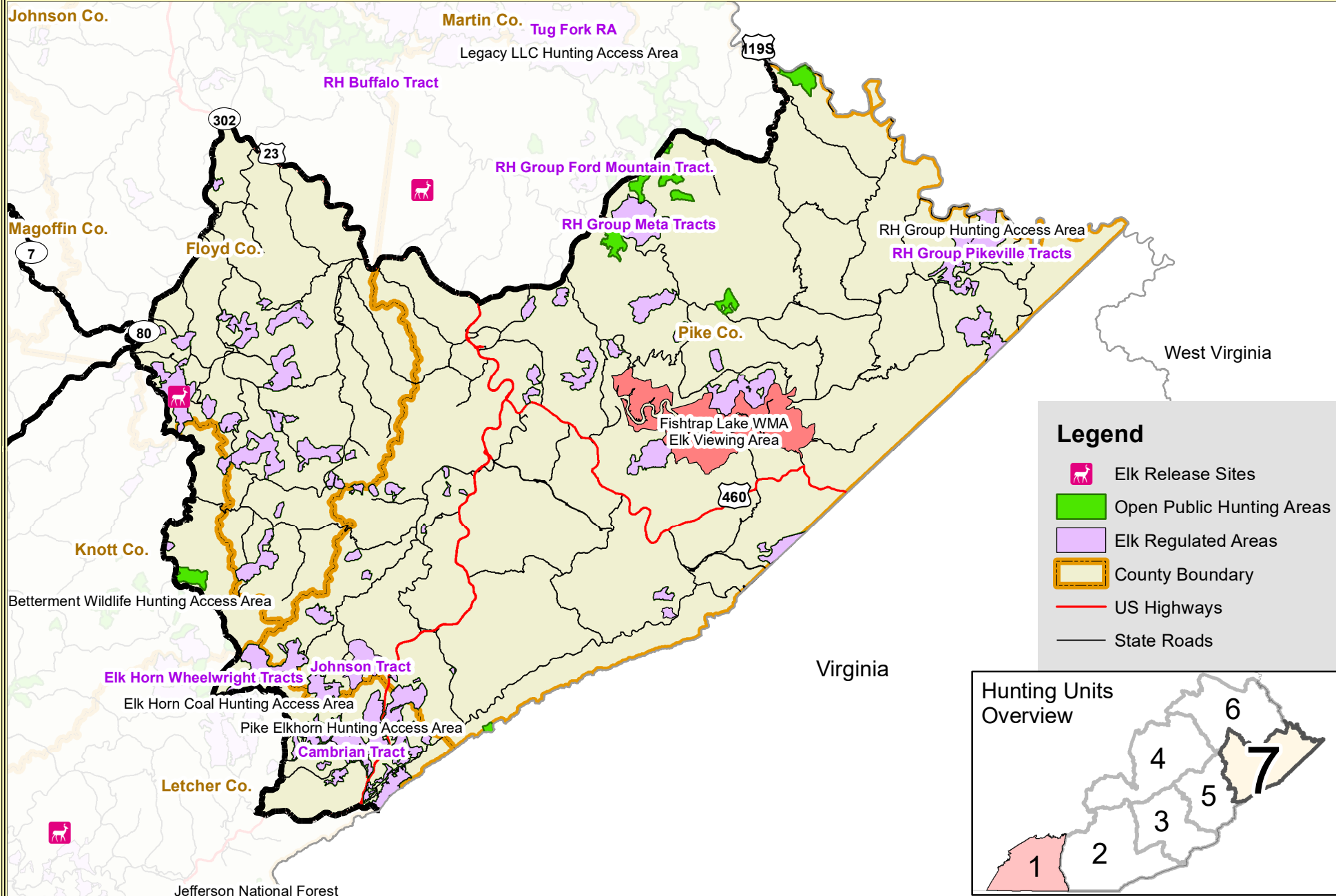


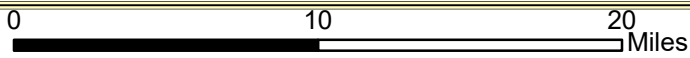
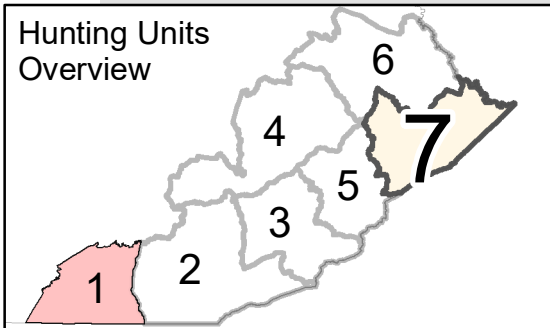
# Elk Hunting Unit 7

The following page describes the boundary roads.



### Legend

- Elk Release Sites
- Open Public Hunting Areas
- Elk Regulated Areas
- County Boundary
- US Highways
- State Roads



1:400,000

## **ELK HUNTING UNIT 7 BOUNDARY DESCRIPTION**

Including portions of Letcher, Knott, Floyd, and Pike counties, the western boundary of unit 7 follows highway 23 from the Kentucky- Virginia border north to the intersection of highway 119; west on highway 119 to the intersection of highway 805; north on highway 805 to the intersection of highway 317; north on highway 317 to the intersection of highway 7; north on highway 7 to the intersection of highway 80; east on highway 80 to the intersection of highway 23; southeast on highway 23 to the intersection of highway 119; northeast on highway 119 to the Kentucky-West Virginia boundary; east southeast along the Kentucky-West Virginia boundary to the Kentucky-West Virginia-Virginia boundary; south southwest along the Kentucky-Virginia boundary to highway 23 to complete the unit 7 boundary.

To view a more detailed maps of a specific Public Hunting Area or Regulated Area please visit the following links: [Public Hunting Areas](#) and [Regulated Areas](#)