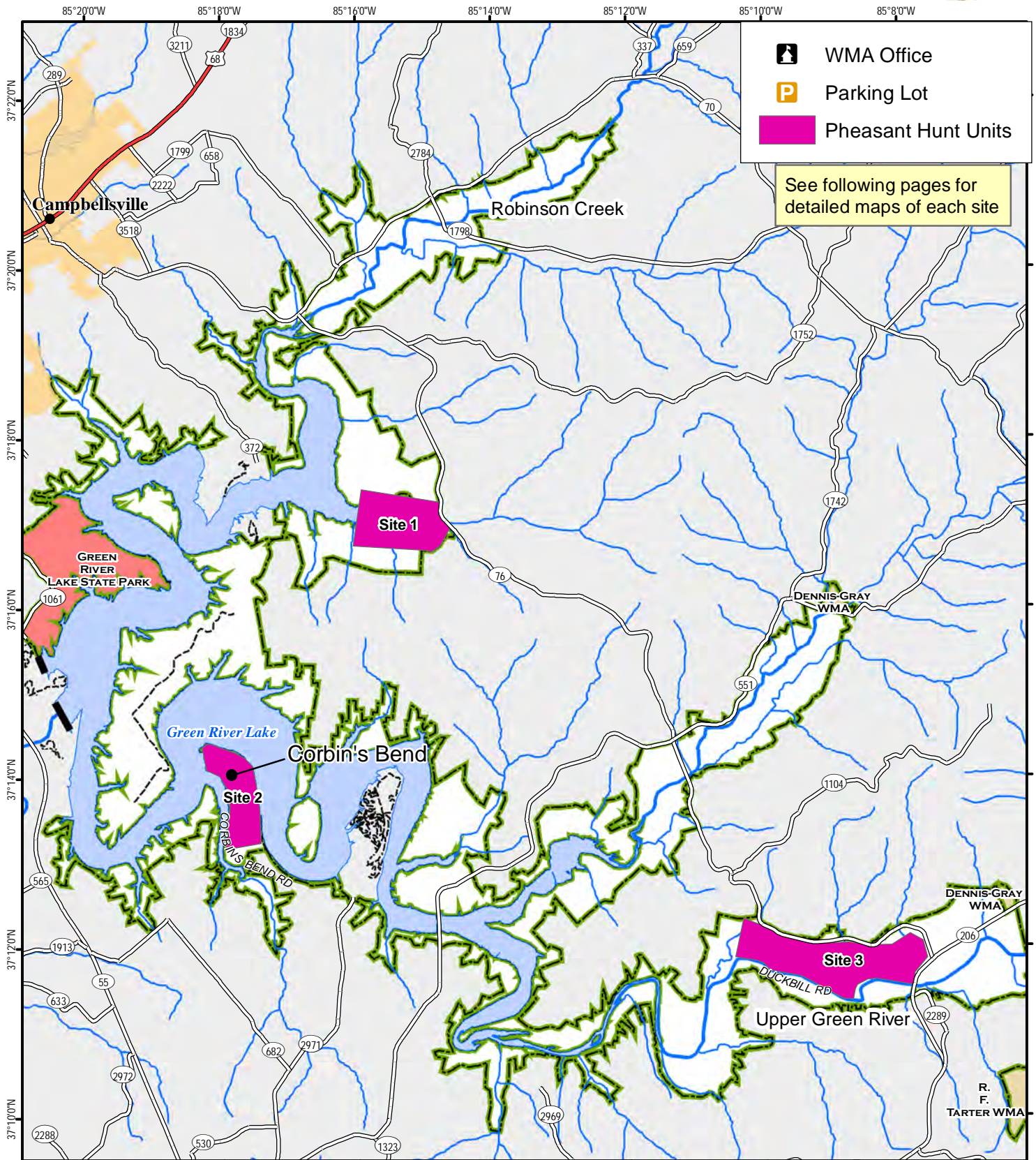




Green River Lake Wildlife Management Area Pheasant Quota Hunt Overview



See following pages for detailed maps of each site

A map legend and additional information are provided on PDF pages that accompany this map.

Publication Date: 10/7/2020



Scale 1:115,000



Note to Map Users

Map prepared by Kentucky Department of Fish & Wildlife Resources (KDFWR). Although KDFWR strives for accuracy, data used to create this map are from a variety of sources and dates; as such, KDFWR makes no representations regarding the accuracy or fitness for use of the information furnished herein.



Pheasant Release Fields Green River WMA Site 1, Wilson Creek

Hwy 76

Wilson Creek Rd

Legend

Pheasants

- YES
- NO

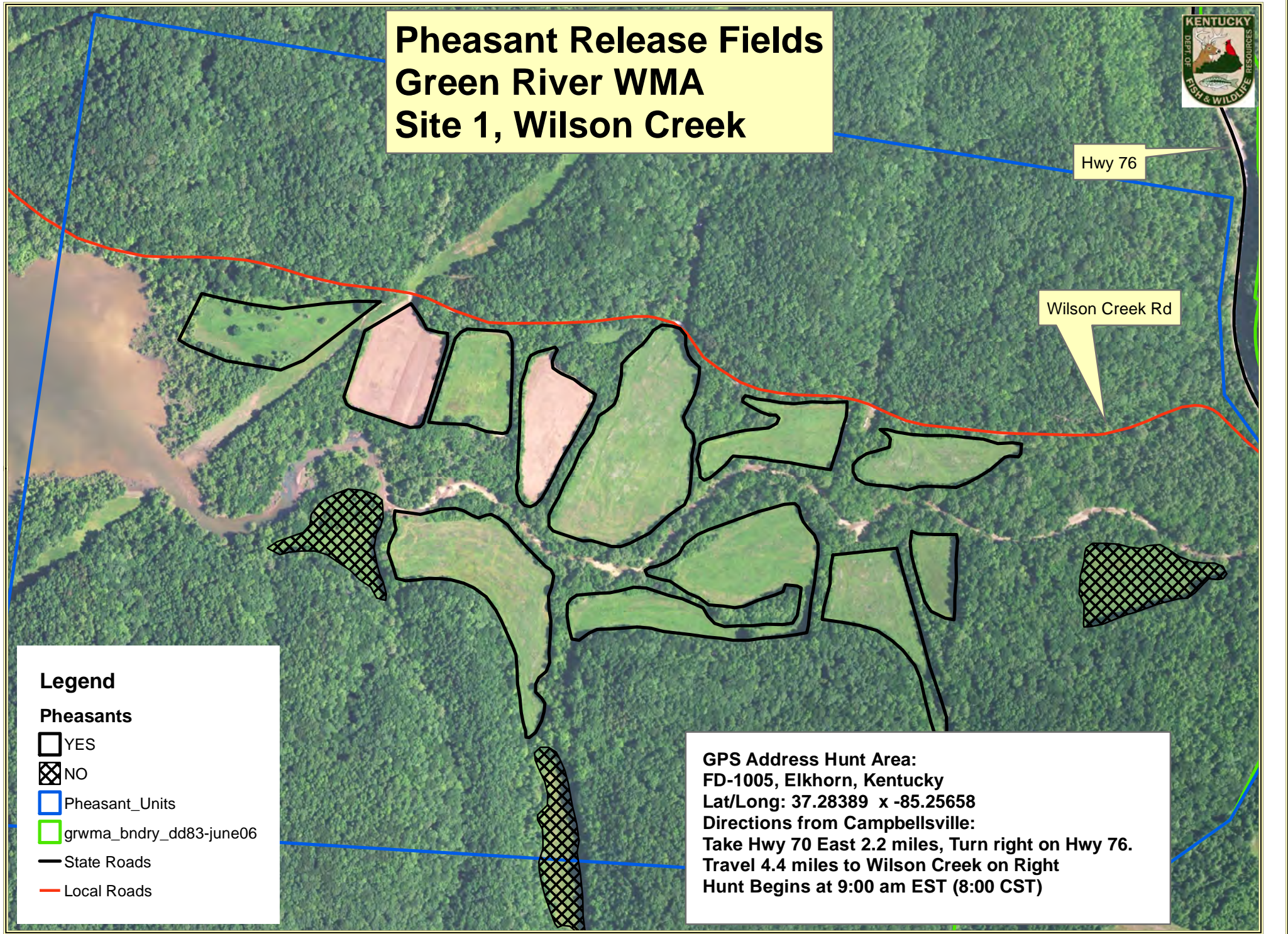
Pheasant_Units

grwma_bndry_dd83-june06

State Roads

Local Roads

GPS Address Hunt Area:
FD-1005, Elkhorn, Kentucky
Lat/Long: 37.28389 x -85.25658
Directions from Campbellsville:
Take Hwy 70 East 2.2 miles, Turn right on Hwy 76.
Travel 4.4 miles to Wilson Creek on Right
Hunt Begins at 9:00 am EST (8:00 CST)



Pheasant Release Fields Green River WMA Site 2, Corbins Bend



Legend

Pheasants Released



NO



YES



grwma_bndry_dd83-june06

GPS Address to Release Site:
1900 Corbins Bend Rd, Columbia, Ky 42728
Lat / Long: 37.22286 x -85.29608

Hunt Begins at 9:00 am EST, 8:00 am CST

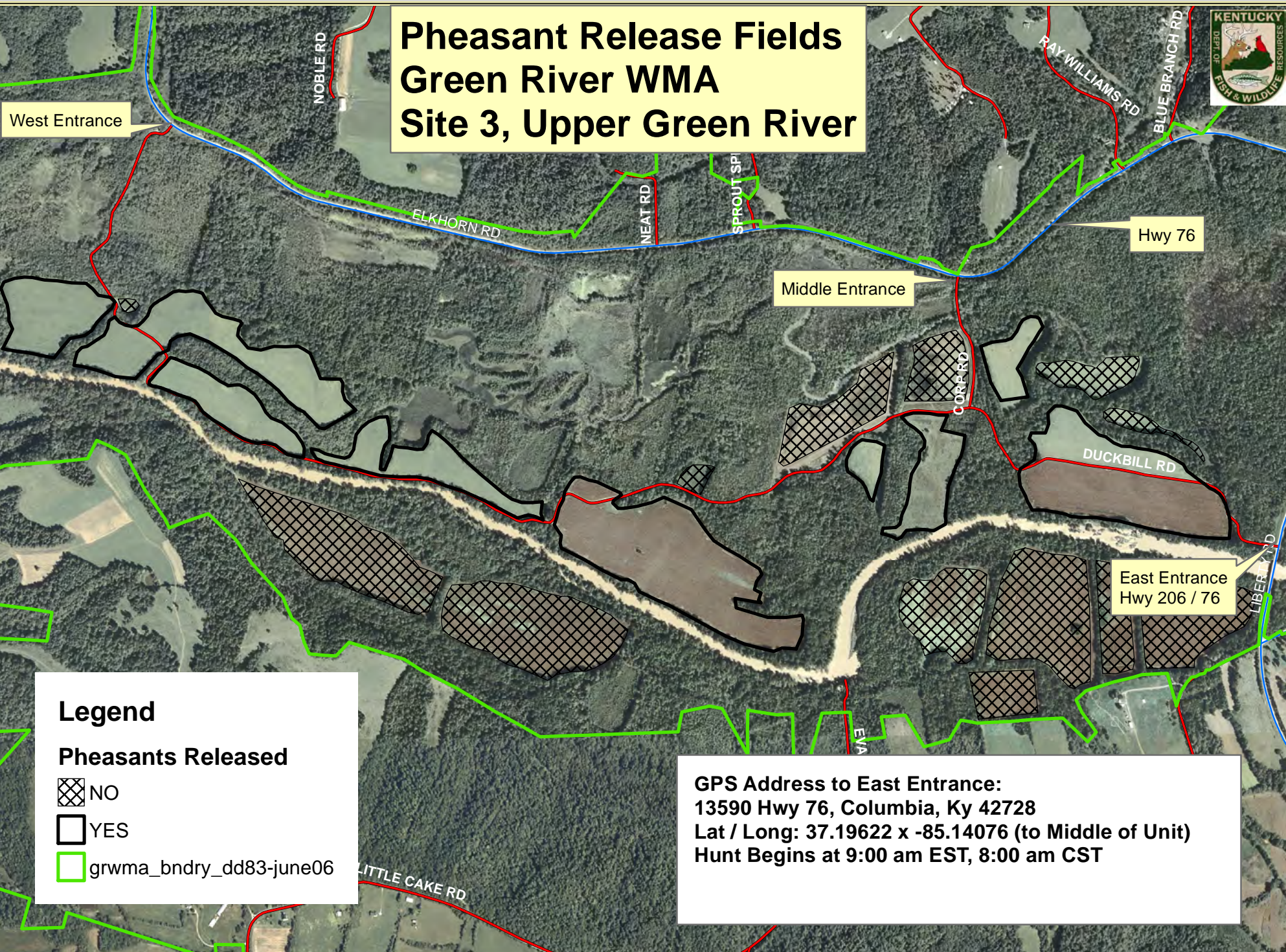
Release Site
Starts Here

CORBINS BEND RD





Pheasant Release Fields Green River WMA Site 3, Upper Green River



West Entrance




Hwy 76

Middle Entrance

East Entrance
Hwy 206 / 76

Legend

Pheasants Released

-  NO
-  YES
-  grwma_bndry_dd83-june06

GPS Address to East Entrance:
 13590 Hwy 76, Columbia, Ky 42728
 Lat / Long: 37.19622 x -85.14076 (to Middle of Unit)
 Hunt Begins at 9:00 am EST, 8:00 am CST